



GEAR PUMPS

MODEL ALP



WWW.OLEDDINAMICAMOZIONI.IT

ALP1

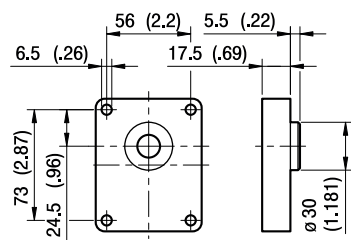
GEAR PUMPS
GROUP 1

POMPE AD INGRANAGGI

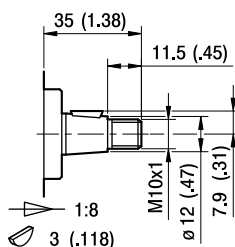


TYPE	DISPLACEMENT CM ³ / REV	FLOW AT 1500 REV/MIN LITRES/ MIN	MAXIMUM PRESSURE			MAXIMUM SPEED RPM
			P1 BAR	P2 BAR	P3 BAR	
ALP1-D-2	1.4	2.0	250	270	290	6000
ALP1-D-3	2.1	2.9	250	270	290	6000
ALP1-D-4	2.8	3.9	250	270	290	5000
ALP1-D-5	3.5	4.9	250	270	290	5000
ALP1-D-6	4.1	5.9	250	270	290	4000
ALP1-D-7	5.2	7.4	230	245	260	4000
ALP1-D-9	6.2	8.8	230	245	260	3800
ALP1-D-11	7.6	10.8	200	215	230	3200
ALP1-D-13	9.3	13.3	180	195	210	2600
ALP1-D-16	11.0	15.7	170	185	200	2200
ALP1-D-20	13.8	19.7	150	165	180	1800

FLANGE

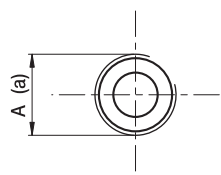


SHAFTS



MAX TORQUE: 100 NM

PORTS



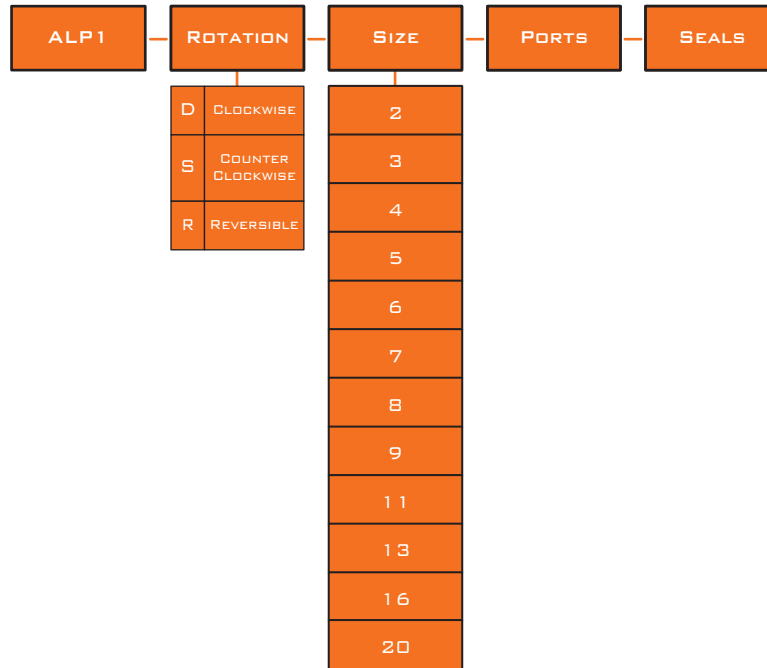
FG

TYPE	INLET	OUTLET
	A	A
ALP1...2 TO ALP1...5	G ¹ / ₂	G ³ / ₈
ALP1...6 TO ALP1...20	G ¹ / ₂	G ¹ / ₂

TIGHTENING TORQUES FOR G¹/₂ FITTING: 50 NM. TIGHTENING TORQUES FOR G³/₈ FITTING: 35 NM.
PLEASE CHECK WITH THE FITTINGS SUPPLIERS.



ORDER CODE

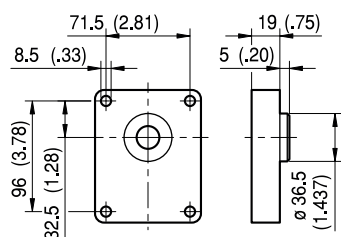


EXAMPLE

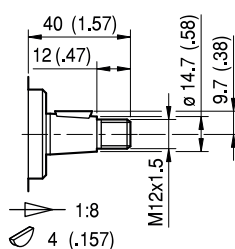
ALP1-D-2-FG-V = CLOCKWISE ROTATION, 1.4 CC/REV, EUROPEAN FLANGE, 1:8 TAPERED SHAFT, THREADED PORTS (FG), HIGH TEMPERATURE SEALS (V).

TYPE	DISPLACEMENT	FLOW AT 1500 REV/MIN	MAXIMUM PRESSURE			MAXIMUM SPEED
			P1	P2	P3	
	CM ³ / REV	LITRES/ MIN	BAR	BAR	BAR	RPM
ALP2-D-6	4.5	6.4	250	270	290	4000
ALP2-D-9	6.4	9.1	250	270	290	4000
ALP2-D-10	7.0	10.0	250	270	290	4000
ALP2-D-12	8.3	11.8	250	270	290	3500
ALP2-D-13	9.6	13.7	250	270	290	3000
ALP2-D-16	11.5	16.4	230	250	270	4000
ALP2-D-20	14.1	20.1	230	250	270	4000
ALP2-D-22	16.0	22.8	210	225	240	4000
ALP2-D-25	17.9	25.5	210	225	240	3600
ALP2-D-30	21.1	30.1	180	195	210	3200
ALP2-D-34	23.7	33.7	180	195	210	3000
ALP2-D-37	25.5	36.4	170	185	200	2800
ALP2-D-40	28.2	40.1	170	185	200	2500
ALP2-D-50	35.2	50.2	140	155	170	2500

FLANGE

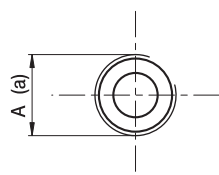


SHAFTS



MAX TORQUE: 200 NM

PORTS



FG

TYPE	INLET	OUTLET
	A	A
ALP2...6 TO ALP2...16	G ¹ / ₂	G ¹ / ₂
ALP2...20 TO ALP2...40	G ³ / ₄	G ¹ / ₂

TIGHTENING TORQUES FOR G¹/₂ FITTING: 50 NM. TIGHTENING TORQUES FOR G³/₄ FITTING: 60 NM. PLEASE CHECK WITH THE FITTINGS SUPPLIERS.



ORDER CODE



EXAMPLE

ALP2-D-6-FG-V = CLOCKWISE ROTATION, 4.5 CC/REV, EUROPEAN FLANGE, 1:8 TAPERED SHAFT, THREADED PORTS (FG), HIGH TEMPERATURE SEALS (V).

ALP3

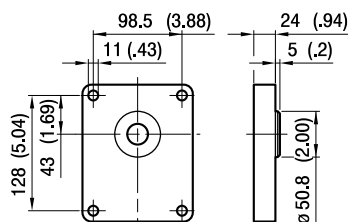
GEAR PUMPS
GROUP 3

POMPE AD INGRANAGGI

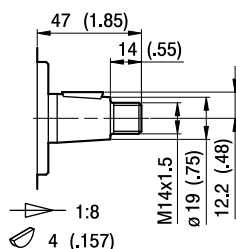


TYPE	DISPLACEMENT CM ³ / REV	FLOW AT 1500 REV/MIN LITRES/ MIN	MAXIMUM PRESSURE			MAXIMUM SPEED RPM
			P1 BAR	P2 BAR	P3 BAR	
ALP3-D-30	20	29	230	250	270	3500
ALP3-D-33	22	31	230	250	270	3500
ALP3-D-40	26	37	230	250	270	3000
ALP3-D-50	33	48	230	250	270	3000
ALP3-D-60	39	56	220	240	260	3000
ALP3-D-66	44	62	210	230	250	2800
ALP3-D-80	52	74	200	215	230	2400
ALP3-D-94	61	87	190	205	220	2800
ALP3-D-110	71	101	170	185	200	2500
ALP3-D-120	78	112	160	175	190	2300
ALP3-D-135	87	124	140	155	170	2000

FLANGE

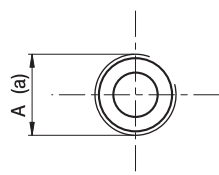


SHAFTS



MAX TORQUE: 300 NM

PORTS



FG

TYPE	INLET	OUTLET
	A	A
ALP3...30 TO ALP3...33	G ³ / ₄	G ³ / ₄
ALP3...40 TO ALP3...60	G1	G ³ / ₄
ALP3...66 TO ALP3...94	G1 ¹ / ₄	G1
ALP3...110 TO ALP3...135	G1 ¹ / ₂	G1 ¹ / ₄

TIGHTENING TORQUES FOR G³/₄ FITTING: 60 NM.
 TIGHTENING TORQUES FOR G1 FITTING: 70 NM.
 TIGHTENING TORQUES FOR G1¹/₄ FITTING: 80 NM
 TIGHTENING TORQUES FOR G1¹/₂ FITTING: 90 NM.
 PLEASE CHECK WITH THE FITTINGS SUPPLIERS.

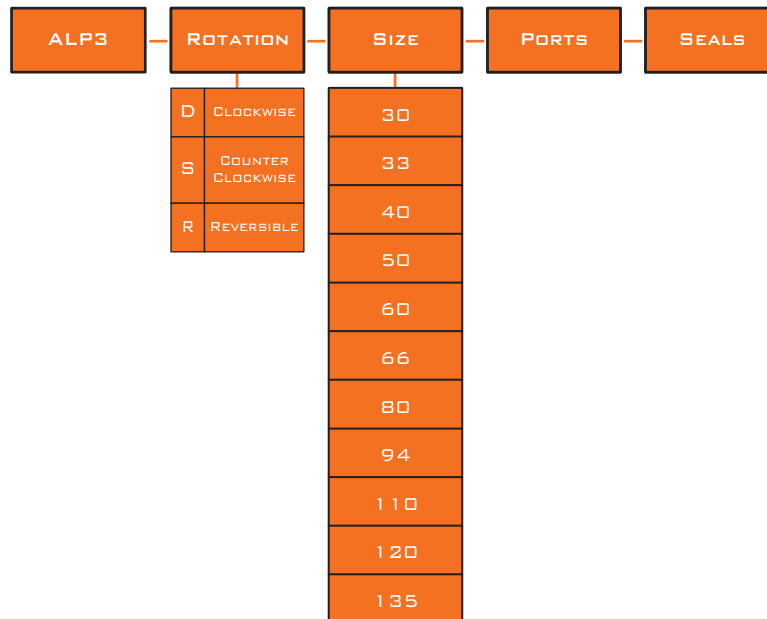


POMPE AD INGRANAGGI

ALP3

GEAR PUMPS
GROUP 3

ORDER CODE



EXAMPLE

ALP3-D-30-FG-V = CLOCKWISE ROTATION, 20 CC/REV, EUROPEAN FLANGE, 1:8 TAPERED SHAFT, THREADED PORTS (FG), HIGH TEMPERATURE SEALS (V).