

GENERAL DATA PUMPS AND MOTORS

Series	Pump type PLP Motor type PLM	Displacement in ³ /rev (cm ³ /rev)	Max. pressure			Max. speed	Min. speed min ⁻¹
			p ₁	p ₂	p ₃		
			psi (bar)				
POLARIS 10	PL. 10•1	0.07 (1,07)	3770 (260)	4060 (280)	4205 (290)	4000	650
	PL. 10•1,5	0.10 (1,6)	3770 (260)	4060 (280)	4205 (290)	4000	650
	PL. 10•2	0.13 (2,13)	3770 (260)	4060 (280)	4205 (290)	4000	650
	PL. 10•2,5	0.16 (2,67)	3770 (260)	4060 (280)	4205 (290)	4000	650
	PL. 10•3,15	0.20 (3,34)	3770 (260)	4060 (280)	4205 (290)	4000	650
	PL. 10•4	0.26 (4,27)	3625 (250)	3915 (270)	4060 (280)	4000	650
	PL. 10•5	0.33 (5,34)	3625 (250)	3915 (270)	4060 (280)	4000	650
	PL. 10•5,8	0.38 (6,20)	3335 (230)	3625 (250)	3770 (260)	3500	650
	PL. 10•6,3	0.41 (6,67)	3335 (230)	3625 (250)	3770 (260)	3500	650
	PL. 10•8	0.52 (8,51)	2610 (180)	2900 (200)	3045 (210)	3500	650
PL. 10•10	0.65 (10,67)	2030 (140)	2320 (160)	2465 (170)	3500	650	
POLARIS 20	PL. 20•4	0.30 (4,95)	3625 (250)	4060 (280)	4350 (300)	4000	600
	PL. 20•6,3	0.40 (6,61)	3625 (250)	4060 (280)	4350 (300)	4000	600
	PL. 20•7,2	0,44 (7,29)	3625 (250)	4060 (280)	4350 (300)	4000	600
	PL. 20•8	0.50 (8,26)	3625 (250)	4060 (280)	4350 (300)	3500	600
	PL. 20•9	0.56 (9,17)	3625 (250)	4060 (280)	4350 (300)	3500	600
	PL. 20•10,5	0.66 (10,9)	3625 (250)	4060 (280)	4350 (300)	3500	600
	PL. 20•11,2	0.69 (11,23)	3625 (250)	4060 (280)	4350 (300)	3500	600
	PL. 20•14	0.89 (14,53)	3625 (250)	4060 (280)	4350 (300)	3500	500
	PL. 20•16	1.03 (16,85)	3625 (250)	4060 (280)	4350 (300)	3000	500
	PL. 20•19	1.16 (19,09)	2900 (200)	3190 (220)	3480 (240)	3000	500
	PL. 20•20	1.29 (21,14)	2900 (200)	3190 (220)	3480 (240)	3000	500
	PL. 20•24,5	1.52 (24,84)	2465 (170)	2755 (190)	3045 (210)	2500	500
	PL. 20•25	1.61 (26,42)	2465 (170)	2755 (190)	3045 (210)	2500	500
	PL. 20•27,8	1.72 (28,21)	1885 (130)	2175 (150)	2465 (170)	2000	500
	PL. 20•31,5	2.01 (33,03)	1885 (130)	2175 (150)	2465 (170)	2000	500
POLARIS 30	PL. 30•22	1.34 (21,99)	3625 (250)	3915 (270)	4060 (280)	3000	350
	PL. 30•27	1.63 (26,70)	3625 (250)	3915 (270)	4060 (280)	3000	350
	PL. 30•34	2.11 (34,55)	3480 (240)	3770 (260)	3915 (270)	3000	350
	PL. 30•38	2.40 (39,27)	3480 (240)	3770 (260)	3915 (270)	3000	350
	PL. 30•43	2.68 (43,98)	3335 (230)	3625 (250)	3770 (260)	3000	350
	PL. 30•51	3.16 (51,83)	3045 (210)	3335 (230)	3480 (240)	2500	350
	PL. 30•61	3.74 (61,26)	2755 (190)	3045 (210)	3190 (220)	2500	350
	PL. 30•73	4.50 (73,82)	2465 (170)	2755 (190)	2900 (200)	2500	350
	PL. 30•82	4.98 (81,68)	2320 (160)	2465 (170)	2610 (180)	2200	350
PL. 30•90	5.56 (91,10)	2175 (150)	2320 (160)	2465 (170)	2200	350	

p₁= Max. continuous pressure

p₂= Max. intermittent pressure

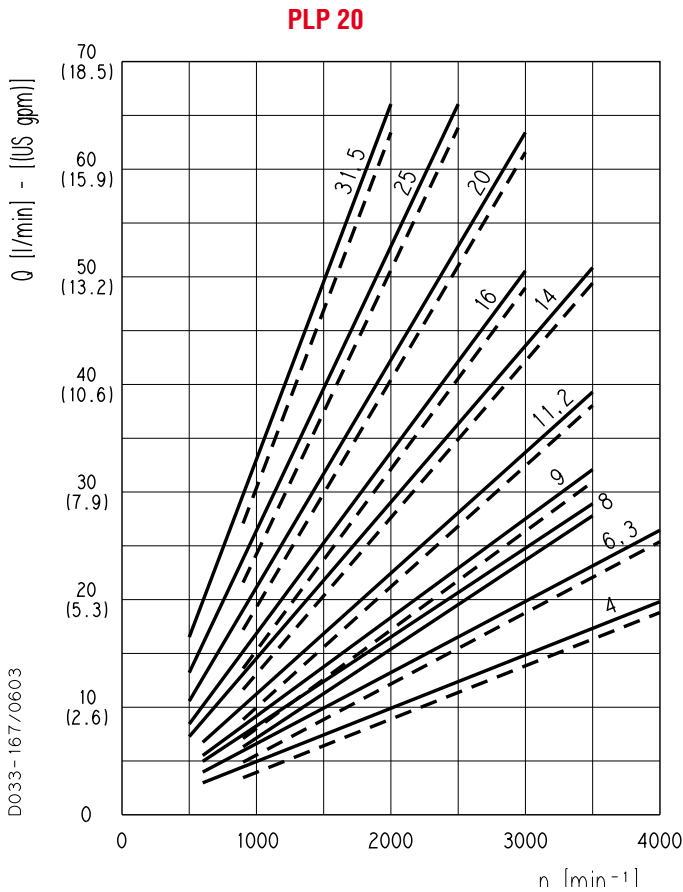
p₃= Max. peak pressure

The values in the table refer to unidirectional pumps and motors. Reversible pumps and motors max pressures are 15% lower than those shown in table. For different working conditions please consult our sales department.

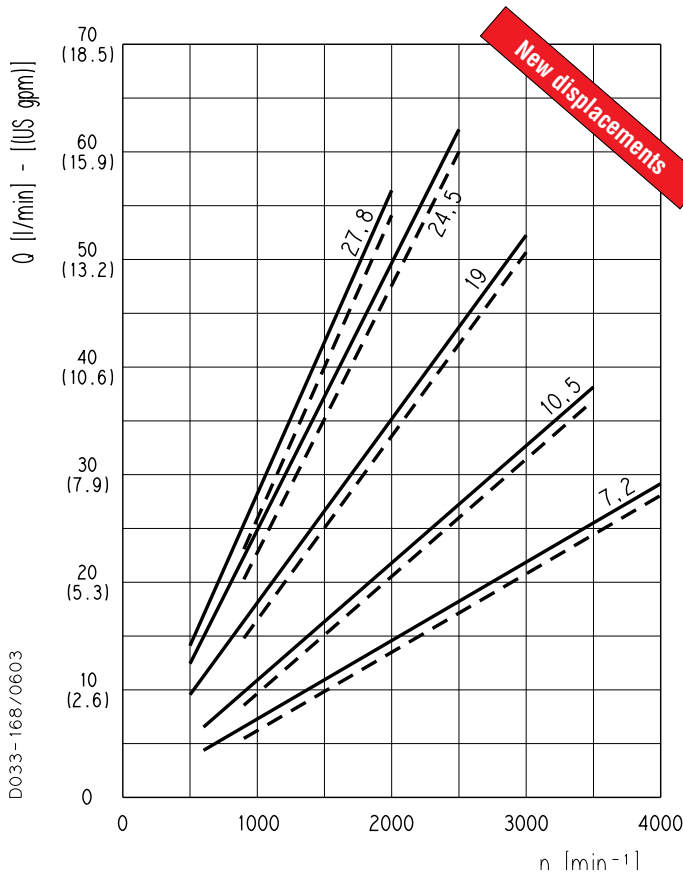
PLP 20

POLARIS 20 GEAR PUMPS PERFORMANCE CURVES

Each curve has been obtained at 122 °F (50°C), using oil with viscosity 168 SSU (36 cSt) at 104 °F (40°C) and at these pressures.



PLP 20•4	—	290 psi (20 bar)
	- -	3625 psi (250 bar)
PLP 20•6,3	—	290 psi (20 bar)
	- -	3625 psi (250 bar)
PLP 20•8	—	290 psi (20 bar)
	- -	3625 psi (250 bar)
PLP 20•9	—	290 psi (20 bar)
	- -	3625 psi (250 bar)
PLP 20•11,2	—	290 psi (20 bar)
	- -	3625 psi (250 bar)
PLP 20•14	—	290 psi (20 bar)
	- -	3625 psi (250 bar)
PLP 20•16	—	290 psi (20 bar)
	- -	3625 psi (250 bar)
PLP 20•20	—	290 psi (20 bar)
	- -	2900 psi (200 bar)
PLP 20•25	—	290 psi (20 bar)
	- -	2465 psi (170 bar)
PLP 20•31,5	—	290 psi (20 bar)
	- -	1885 psi (130 bar)



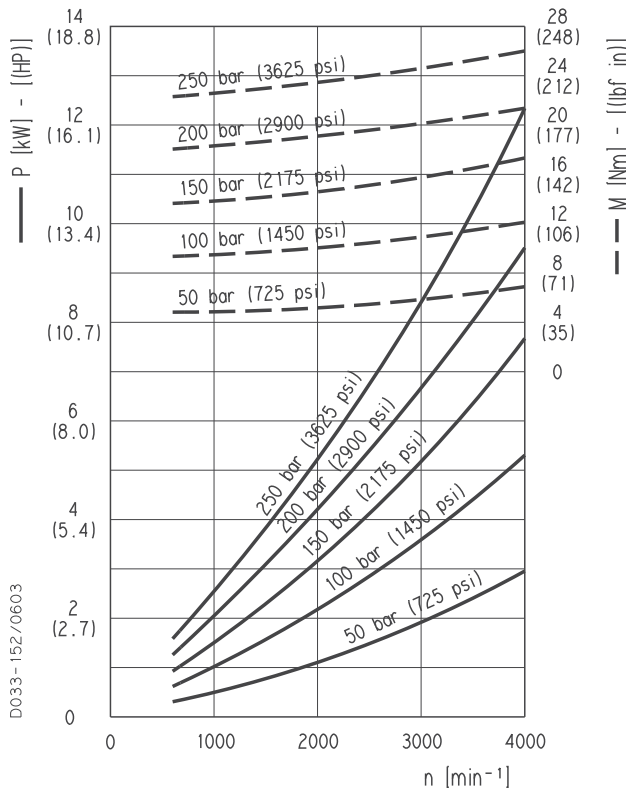
PLP 20•7,2	—	290 psi (20 bar)
	- -	3625 psi (250 bar)
PLP 20•10,5	—	290 psi (20 bar)
	- -	3625 psi (250 bar)
PLP 20•19	—	290 psi (20 bar)
	- -	2900 psi (200 bar)
PLP 20•24,5	—	290 psi (20 bar)
	- -	2465 psi (170 bar)
PLP 20•27,8	—	290 psi (20 bar)
	- -	1885 psi (130 bar)

01/10.03

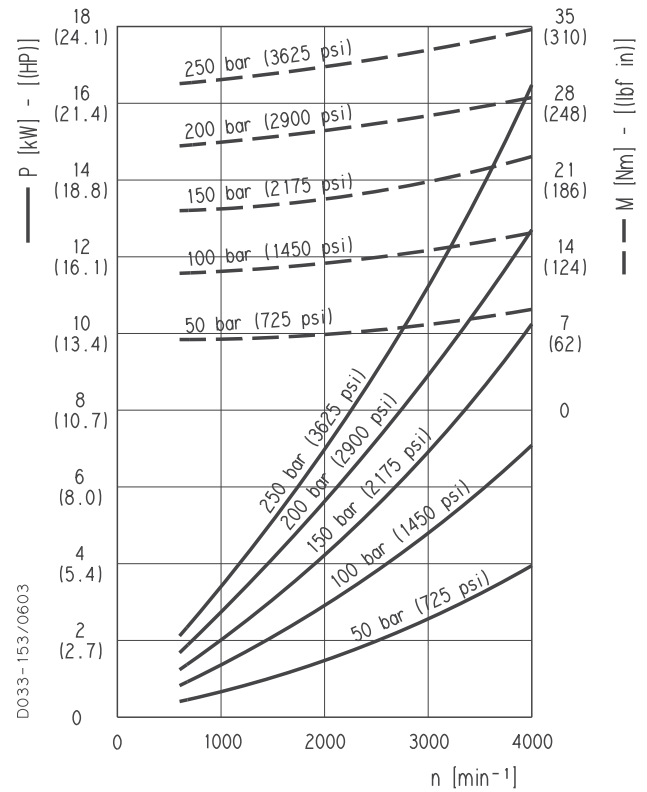
PLP 20

POLARIS 20 GEAR PUMPS PERFORMANCE CURVES

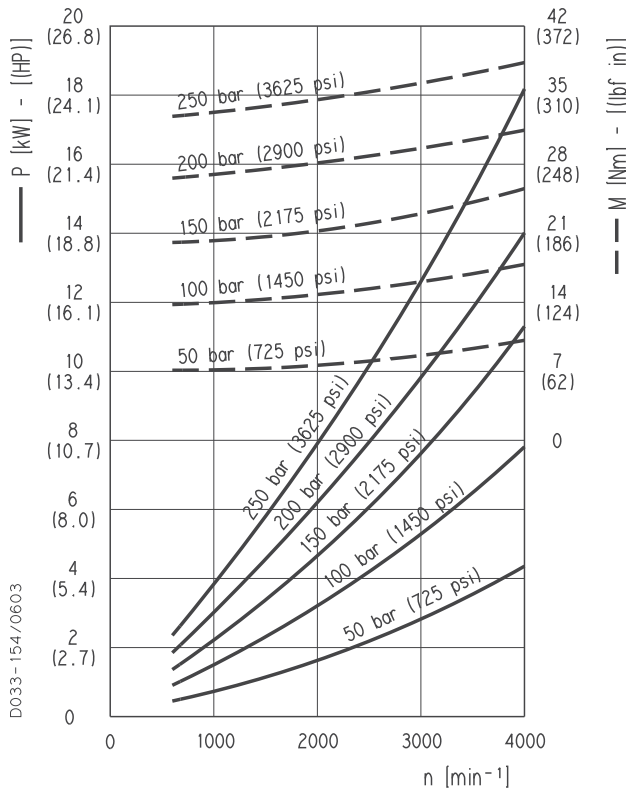
PLP 20•4



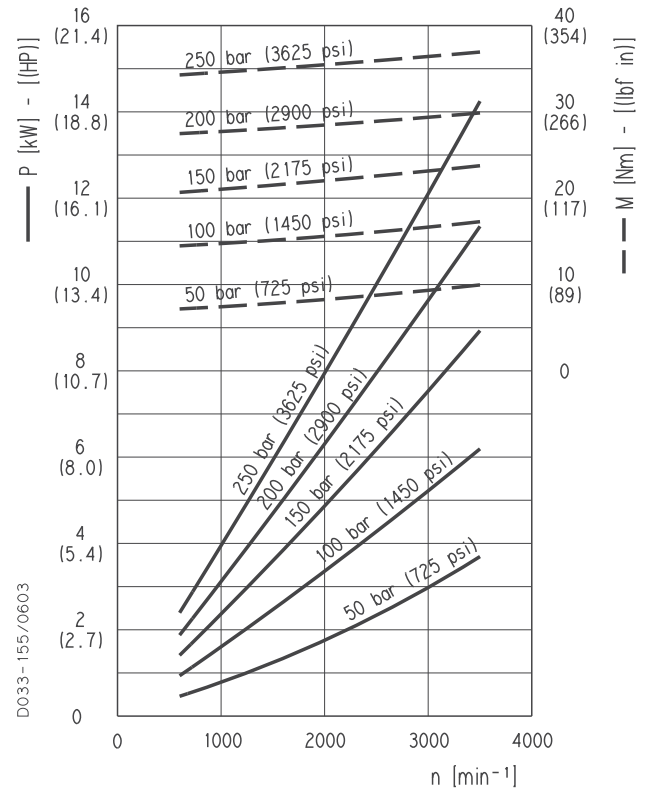
PLP 20•6,3



PLP 20•7,2



PLP 20•8

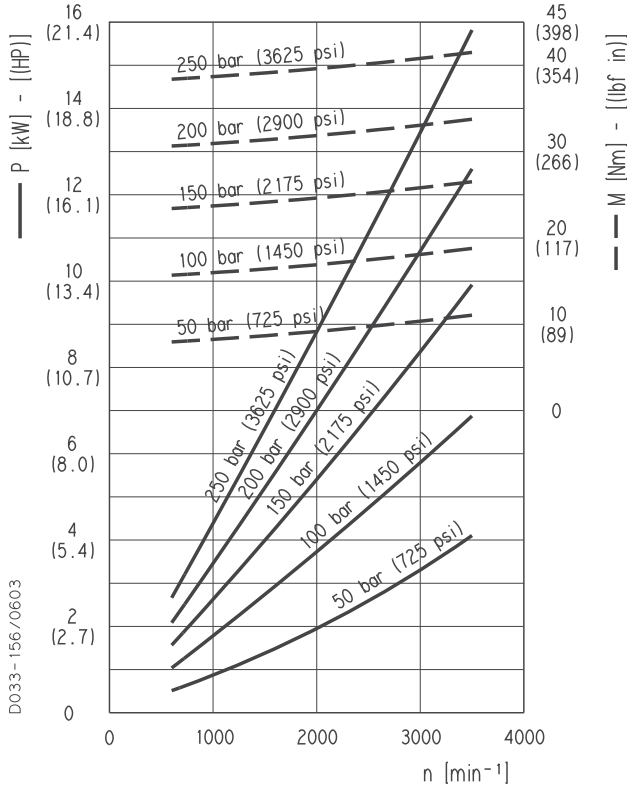


01/10.03

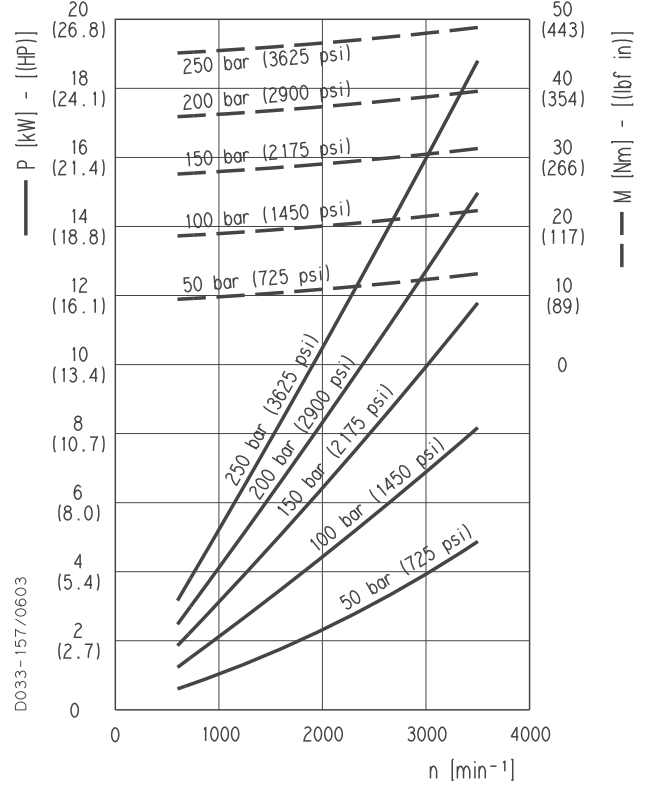
PLP 20

POLARIS 20 GEAR PUMPS PERFORMANCE CURVES

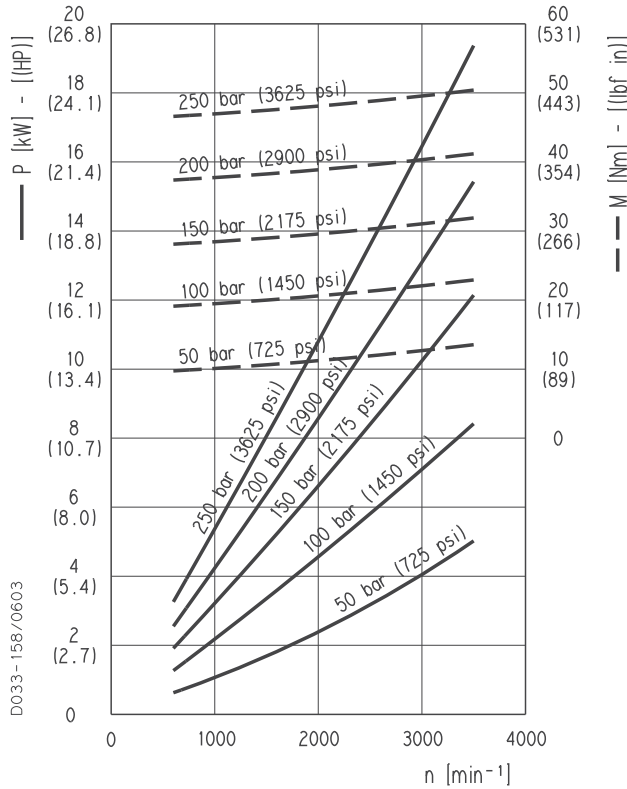
PLP 20•9



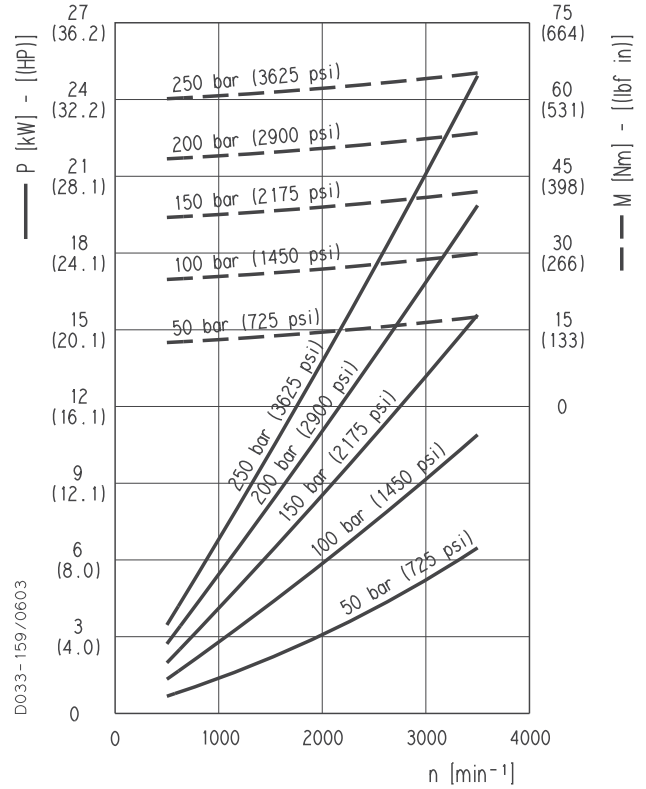
PLP 20•10,5



PLP 20•11,2



PLP 20•14

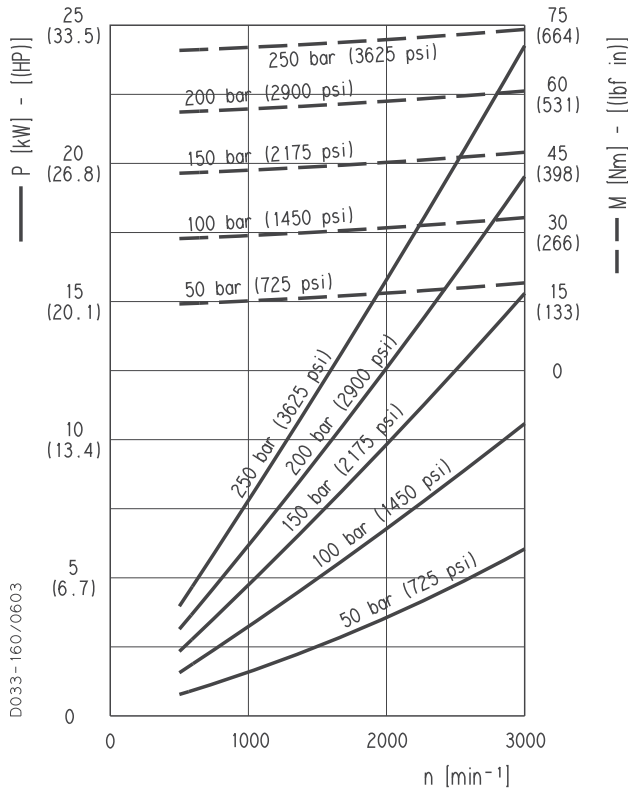


01/10.03

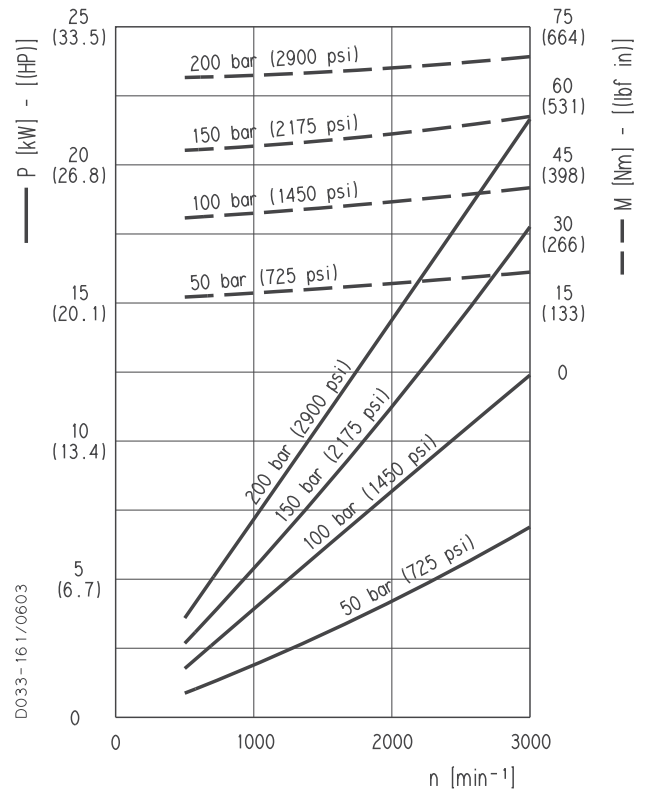
PLP 20

POLARIS 20 GEAR PUMPS PERFORMANCE CURVES

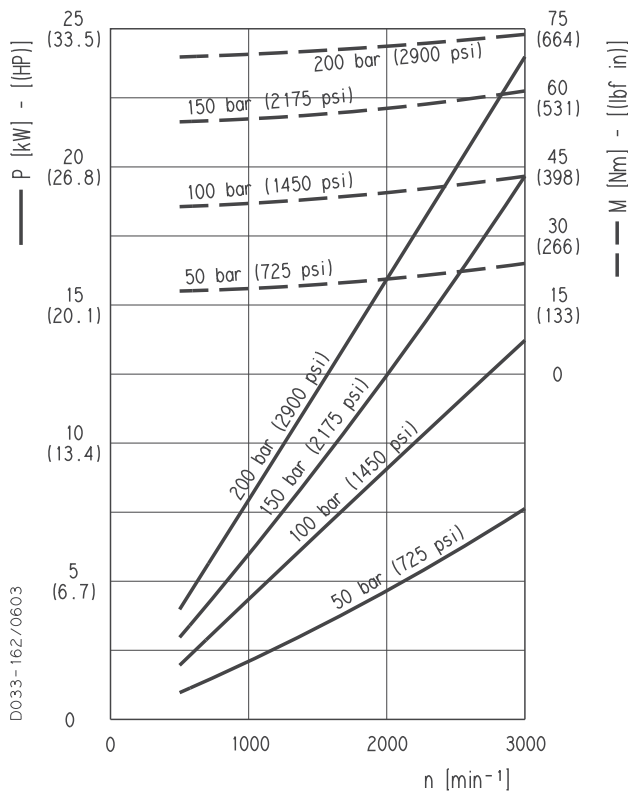
PLP 20•16



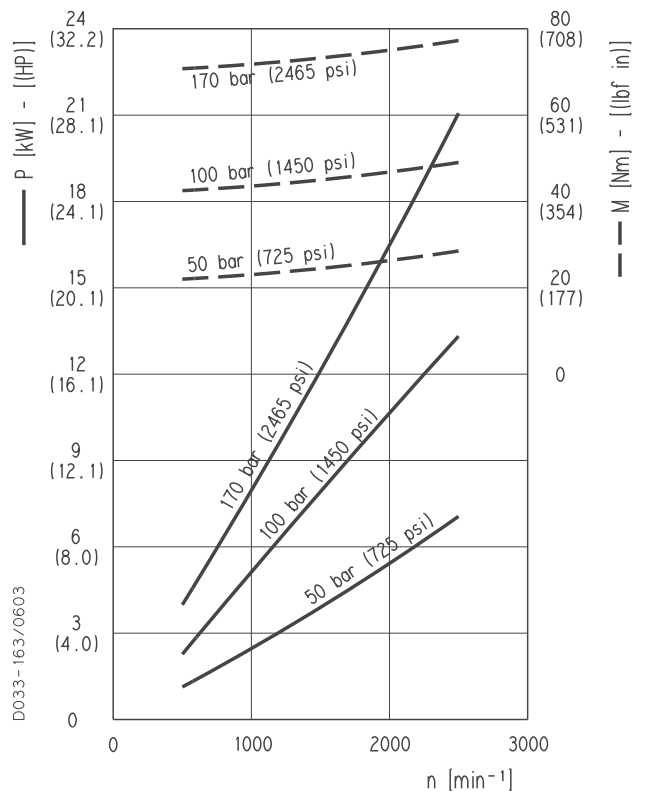
PLP 20•19



PLP 20•20



PLP 20•24,5

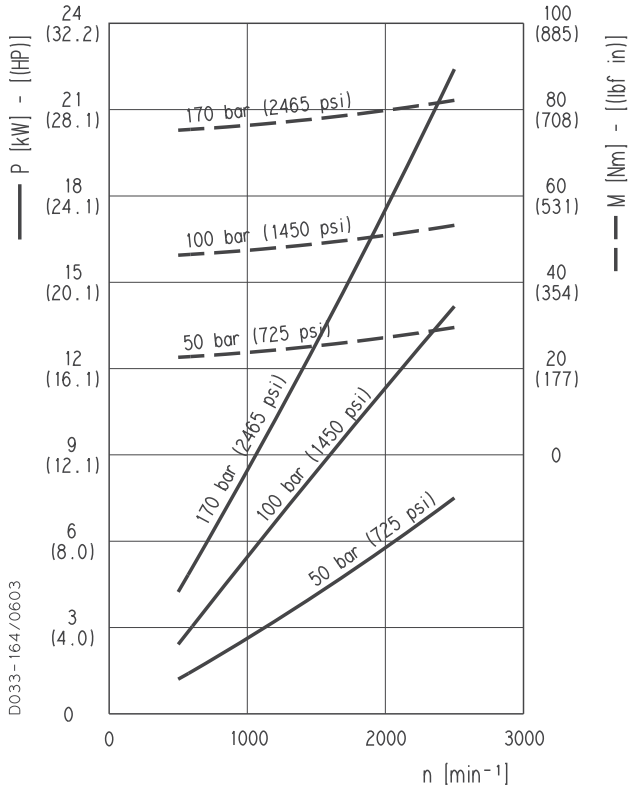


01/10.03

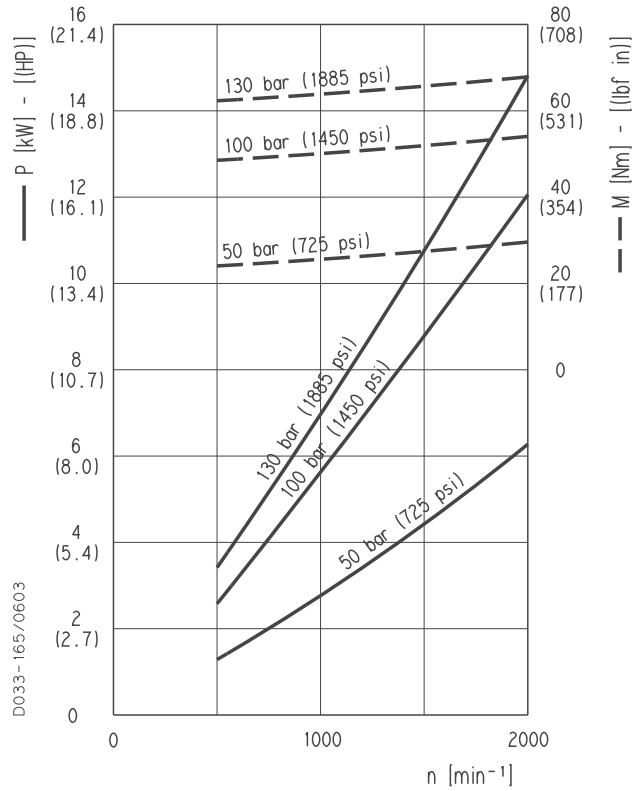
PLP 20

POLARIS 20 GEAR PUMPS PERFORMANCE CURVES

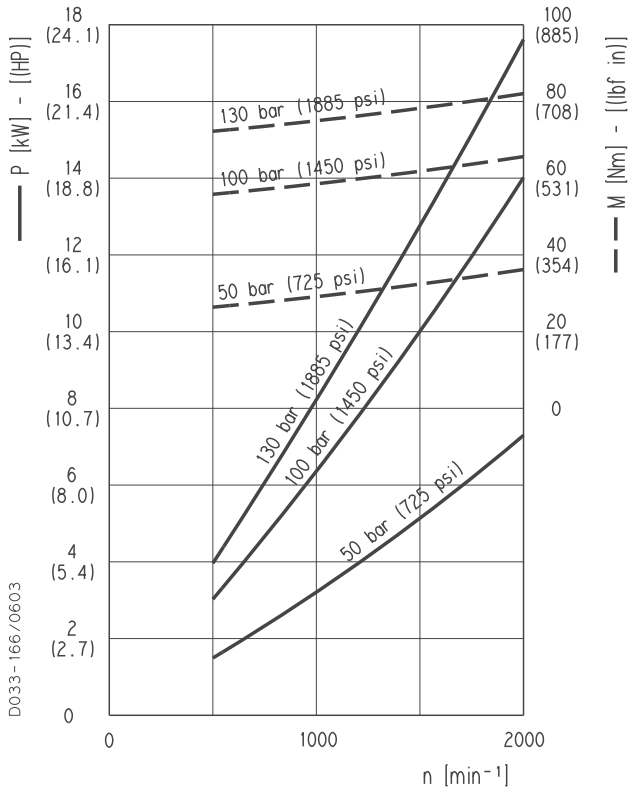
PLP 20•25



PLP 20•27,8



PLP 20•31,5

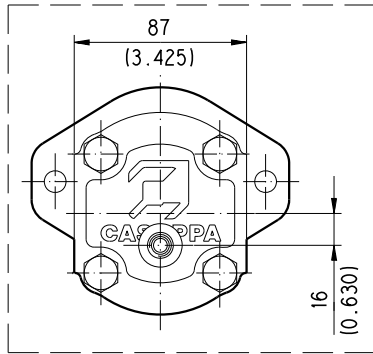


01/10.03

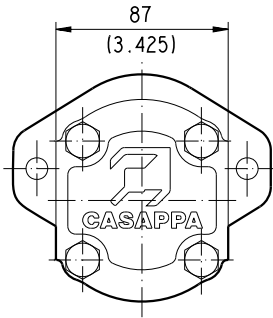
POLARIS 20

SINGLE UNITS SIDE PORTS

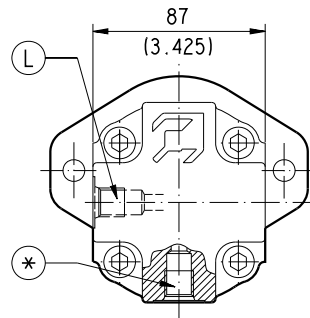
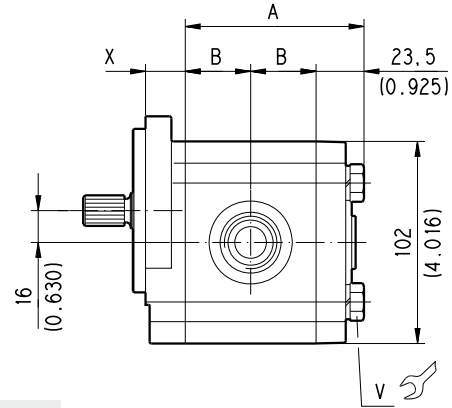
L



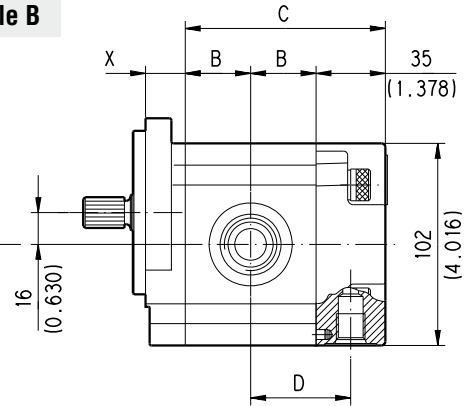
Reversible R



Single rotation S - D and Reversible B



Reversible L



○ For single rotation S - D and reversible rotation R and B the rear cover is available in cast iron and aluminium. For reversible rotation L the rear cover is in aluminium only.

DRAIN PORTS POSITION
L = Side * = Bottom

DRIVE SHAFTS: see page 53 ÷ 55
MOUNTING FLANGE: see page 61 ÷ 65
PORTS: see page. 69 ÷ 74

Mounting flange material	Screw tightening torque	
	Nm (lbf in)	
V		
Aluminium	45 ^{±4,5} (358 ÷ 438)	
Cast iron	70 ^{±7} (558 ÷ 682)	

Mounting flange type version 0	X	
	mm (inch)	
E2	18 (0.7087)	
B2	18,8 (0.7402)	
B4	16 (0.6299)	
B5	16 (0.6299)	
B6	17,7 (0.6969)	
S1	20 (0.7874)	
S2	20 (0.7874)	
S9	20 (0.7874)	
S5	20 (0.7874)	
W8	32,1 (1.2638)	

Pump type Motor type	A	B	C	D
	mm (inch)	mm (inch)	mm (inch)	mm (inch)
PL. 20•4	75 (2.9528)	25,75 (1.0138)	86,5 (3.4055)	43,25 (1.7028)
PL. 20•6,3	77,5 (3.0512)	27 (1.0630)	89 (3.5039)	44,5 (1.7520)
PL. 20•7,2	78,5 (3.0905)	27,5 (1.0826)	90 (3.5433)	45 (1.7716)
PL. 20•8	80 (3.1496)	28,25 (1.1122)	91,5 (3.6024)	45,75 (1.8012)
PL. 20•9	81,3 (3.2008)	28,9 (1.1378)	92,8 (3.6535)	46,4 (1.8268)
PL. 20•10,5	84 (3.3070)	30,25 (1.1909)	95,5 (3.7598)	47,75 (1.8799)
PL. 20•11,2	84,5 (3.3268)	30,5 (1.2008)	96 (3.7795)	48 (1.8898)
PL. 20•14	89,5 (3.5236)	33 (1.2992)	101 (3.9764)	50,5 (1.9882)
PL. 20•16	93 (3.6614)	34,75 (1.3681)	104,5 (4.1142)	52,25 (2.0571)
PL. 20•19	96,4 (3.7952)	36,45 (1.4350)	107,9 (4.2480)	53,45 (2.1043)
PL. 20•20	99,5 (3.9173)	38 (1.4961)	111 (4.3701)	55,5 (2.1850)
PL. 20•24,5	105,1 (4.1378)	40,8 (1.6063)	116,6 (4.5905)	58,3 (2.2953)
PL. 20•25	107,5 (4.2323)	42 (1.6535)	119 (4.6850)	59,5 (2.3425)
PL. 20•27,8	110,2 (4.3386)	43,35 (1.7067)	121,7 (4.7913)	60,85 (2.3957)
PL. 20•31,5	117,5 (4.6260)	47 (1.8504)	129 (5.0787)	64,5 (2.5394)

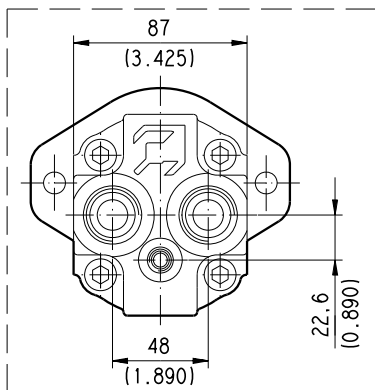
POLARIS 20

SINGLE UNITS REAR PORTS

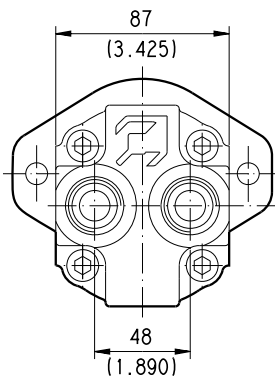
P

Replaces: 01/10.03

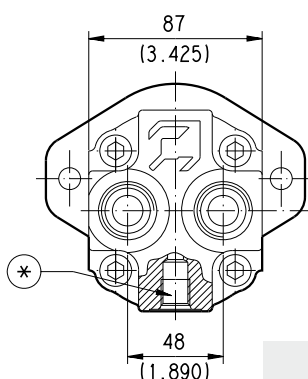
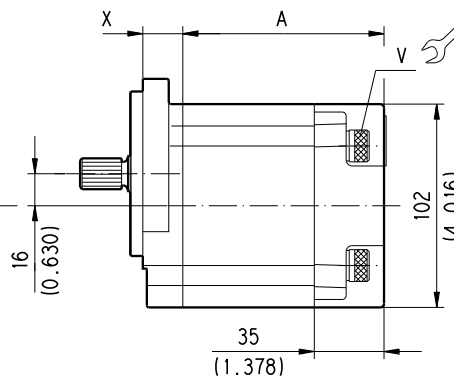
D033-183/0903



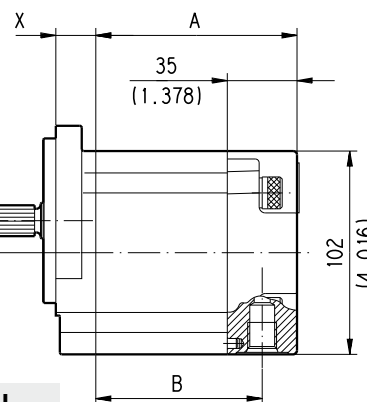
Reversible R



Single rotation S - D and Reversible B



Reversible L



Mounting flange type version 0	X
	mm (inch)
E2	18 (0.7087)
B2	18,8 (0.7402)
B4	16 (0.6299)
B5	16 (0.6299)
B6	17,7 (0.6969)
S1	20 (0.7874)
S2	20 (0.7874)
S9	20 (0.7874)
S5	20 (0.7874)
W8	32,1 (1.2638)

● Rear cover in aluminium only.

DRAIN PORTS POSITION
L = Side * = Bottom

DRIVE SHAFTS: see page 53 ÷ 55

MOUNTING FLANGE: see page 61 ÷ 65

PORTS: see page. 69 ÷ 74

Mounting flange material	Screw tightening torque
	Nm (lbf in)
	V
Aluminium	45 ^{±4,5} (358 ÷ 438)
Cast iron	70 ^{±7} (558 ÷ 682)

● 02/07.2006

Pump type Motor type	A	B
	mm (inch)	mm (inch)
PL. 20•4	86,5 (3.4055)	69 (2.71765)
PL. 20•6,3	89 (3.5039)	71,5 (2.8150)
PL. 20•7,2	90 (3.5433)	72,5 (2.8543)
PL. 20•8	91,5 (3.6024)	74 (2.9134)
PL. 20•9	92,8 (3.6535)	75,3 (2.9646)
PL. 20•10,5	95,5 (3.7598)	78 (3.0708)
PL. 20•11,2	96 (3.7795)	78,5 (3.0906)
PL. 20•14	101 (3.9764)	83,5 (3.2784)
PL. 20•16	104,5 (4.1142)	87 (3.4252)
PL. 20•19	107,9 (4.2480)	89,9 (3.5393)
PL. 20•20	111 (4.3701)	93,5 (3.6811)
PL. 20•24,5	116,6 (4.5905)	99,1 (3.9016)
PL. 20•25	119 (4.6850)	101,5 (3.9961)
PL. 20•27,8	121,7 (4.7913)	104,2 (4.1024)
PL. 20•31,5	129 (5.0787)	111,5 (4.3898)

POLARIS 20

DRIVE SHAFTS

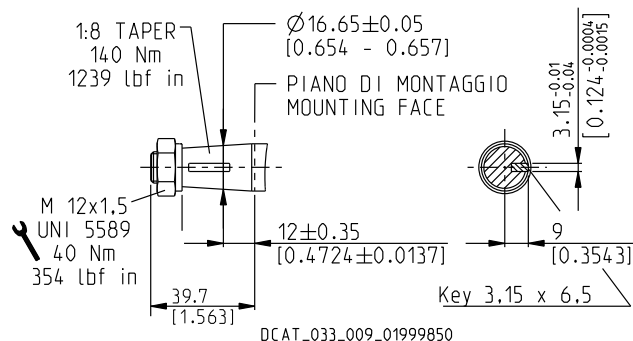
EUROPEAN TAPARED 1:8

82

Not available with size:

20•10,5 20•24,5 20•27,8

Mounting face refer to flange code **E2**



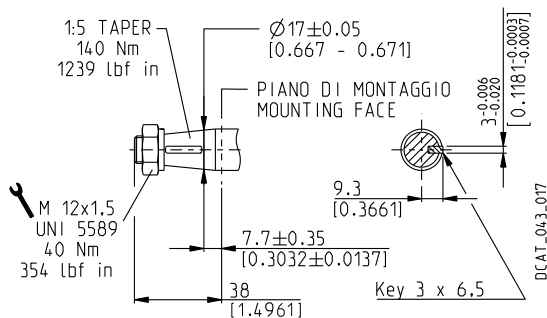
GERMAN TAPERED 1:5

54

Not available with size:

20•7,2 20•10,5 20•19 20•24,5 20•27,8 20•31,5

Mounting face refer to flange code **B2**

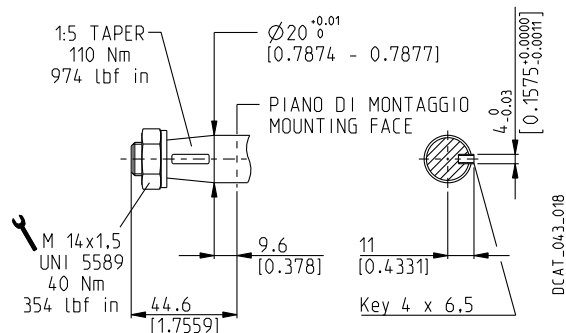


GERMAN TAPARED 1:5

55

Only for version **5, 9** and **W8** with outboard bearing

Mounting face refer to flange code **B2**



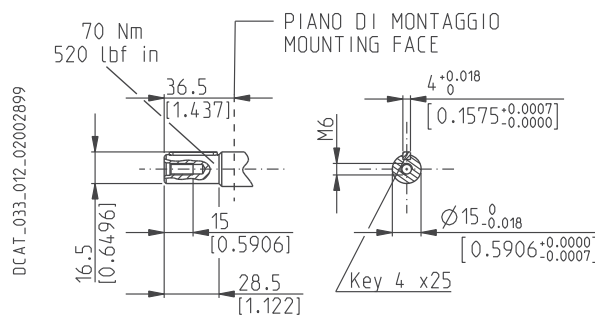
STRAIGHT

46

Not available with size:

20•7,2 20•10,5 20•19 20•24,5 20•25 20•27,8 20•31,5

Mounting face refer to flange code **E2**



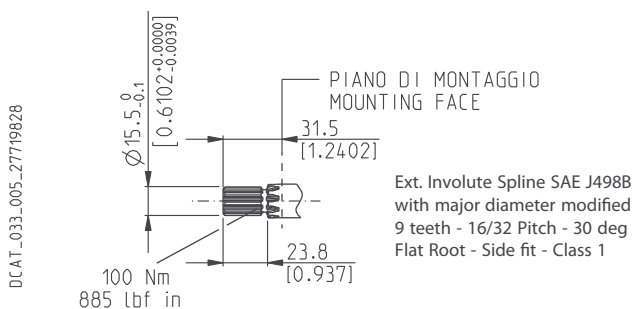
SAE "A" SPLINE

03

Not available with size:

20•24,5 20•27,8

Mounting face refer to flange code **S1**



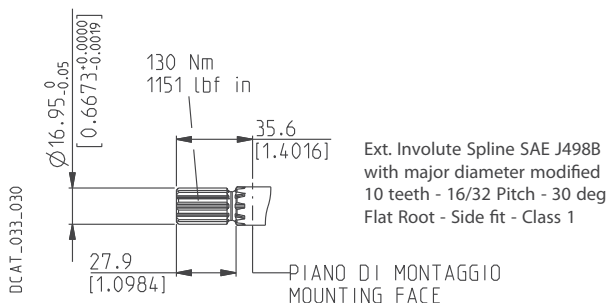
SPLINE

01

Not available with size:

20•6,3 20•9 20•10,5 20•19

Mounting face refer to flange code **S1**



01/10.03

POLARIS 20

DRIVE SHAFTS

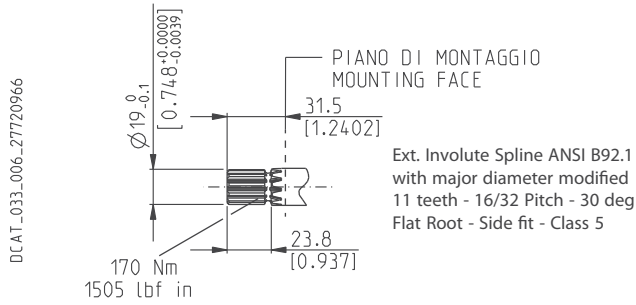
SAE SPLINE

07

Not available with size:

20•7,2 20•10,5 20•19 20•24,5 20•27,8

Mounting face refer to flange code **S1**



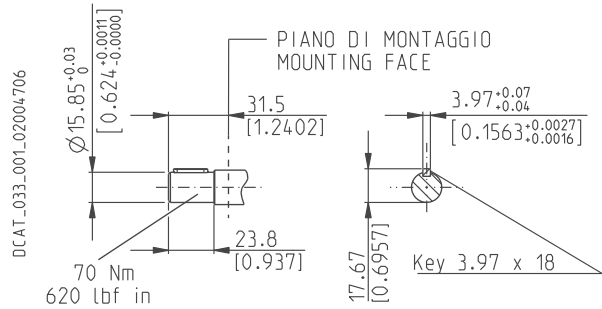
SAE "A" STRAIGHT

31

Not available with size:

20•10,5 20•19 20•24,5 20•27,8

Mounting face refer to flange code **S1**



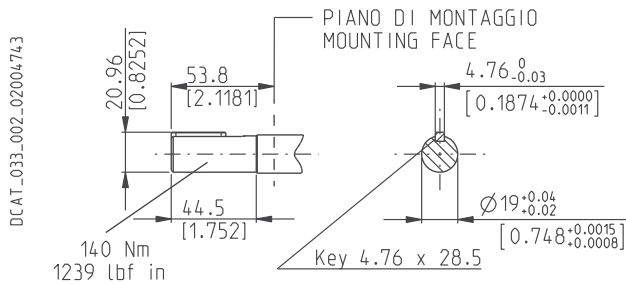
STRAIGHT

49

Not available with size:

20•7,2 20•19 20•24,5

Mounting face refer to flange code **S1**



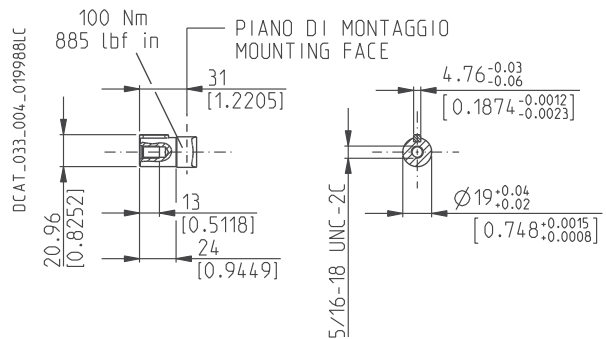
STRAIGHT

50

Not available with size:

20•7,2 20•10,5 20•19 20•24,5 20•27,8

Mounting face refer to flange code **S1**



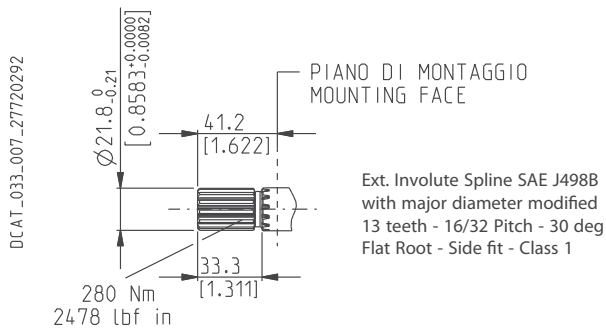
SAE "B" SPLINE

04

Not available with size:

20•4 20•7,2 20•10,5 20•24,5 20•27,8

Mounting face refer to flange code **S5**



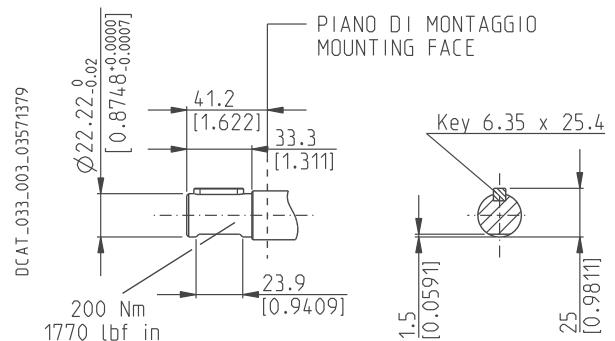
SAE "B" STRAIGHT

32

Not available with size:

20•4 20•7,2 20•8 20•10,5 20•11,2 20•19 20•24,5 20•27,8

Mounting face refer to flange code **S5**



01/10.03

POLARIS 20

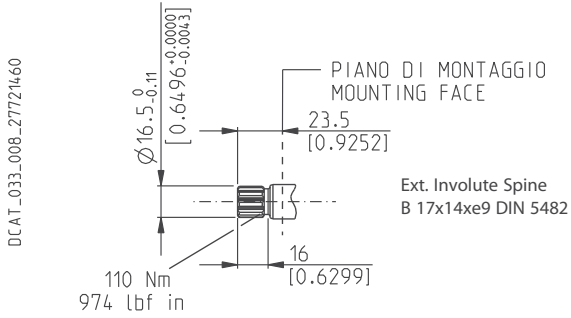
DRIVE SHAFTS

DIN 5482 SPLINE **12**

Not available with size:

20•10,5 20•19 20•24,5 20•27,8

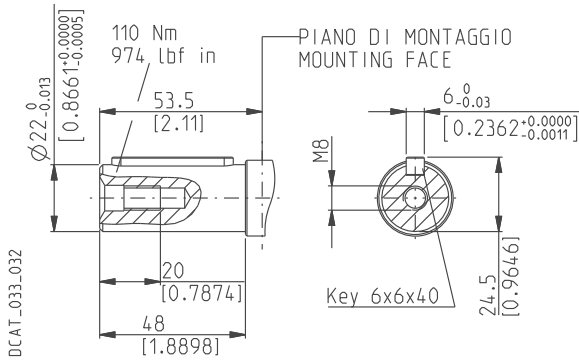
Mounting face refer to flange code **B2**



STRAIGHT **B1**

Only for version **8** and **5** with outboard bearing

Mounting face refer to flange code **E2**



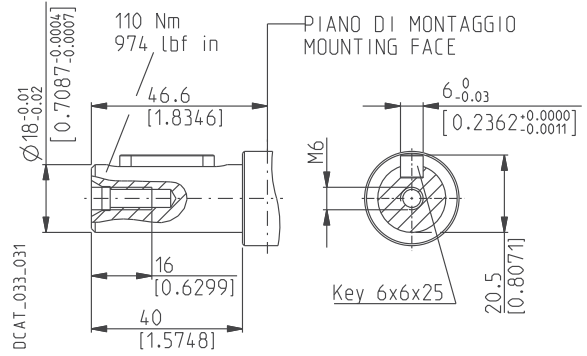
STRAIGHT **48**

Only for version **6** with outboard bearing

Available in 0 version only with size:

20•20

Mounting face refer to flange code **E2**

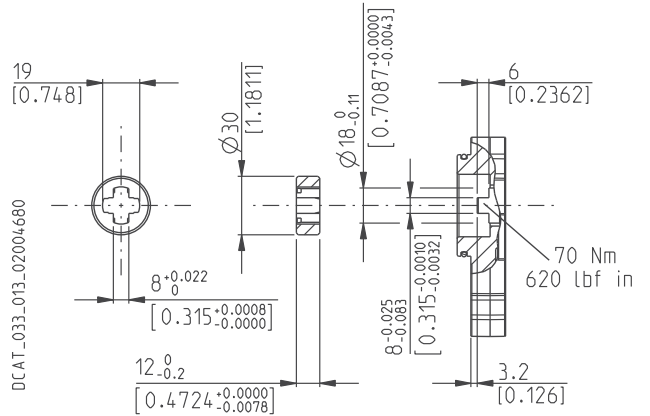


TANG **95**

Not available with size:

20•7,2 20•10,5 20•19 20•24,5 20•27,8

Mounting face refer to flange code **B6**



01/10.03

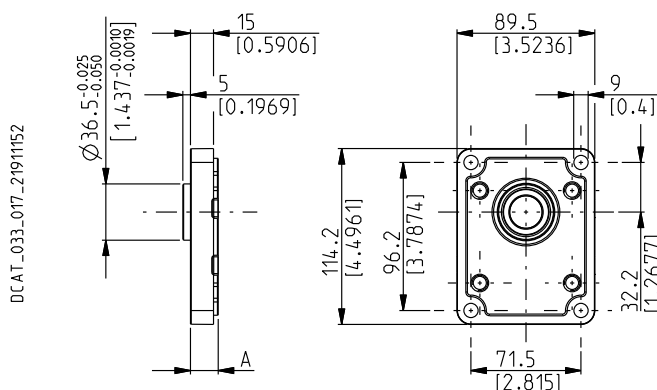
POLARIS 20 MOUNTING FLANGES AND TABLE OF COMPATIBILITY

Replaces: 01/10.03

EUROPEAN

E2

Material: cast iron and aluminium



DRIVE SHAFTS

See page 53 ÷ 55

VERSIONS See page 47	A mm (in)	82	46	B1	03	04	07	12	31	48	49	50	54
0	18 (0.7087)	#	#		X	X	X	X	X	X	X	X	X
4	55,4 (2.1811)	#											
5	43,6 (1.7165)	#		X	X						X	X	X
6	55,4 (2.1811)									#			
7	59,4 (2.3386)	#											
8	59,4 (2.3386)			#									

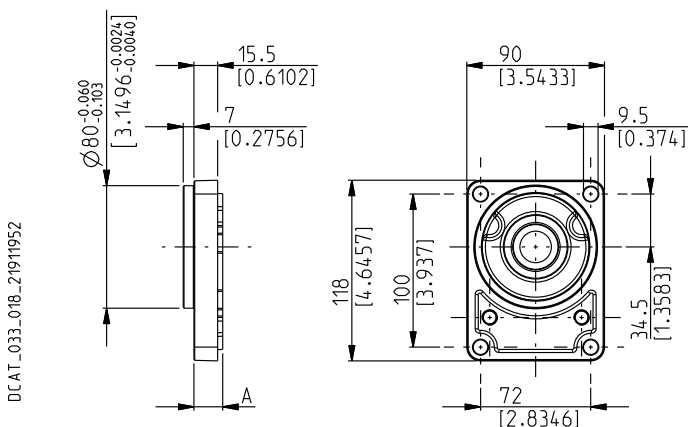
Standard combination

X Available combination

GERMAN

B2

Material: cast iron and aluminium



DRIVE SHAFTS

See page 53 ÷ 55

VERSIONS See page 47	A mm (in)	12	54	55	01	03	31	46	49	82
0	18,8 (0.7402)	#	#		X	X	X	X	X	X
5	44,4 (1.7480)		X	X		X			X	X
9	59,4 (1.7441)			X						

Standard combination

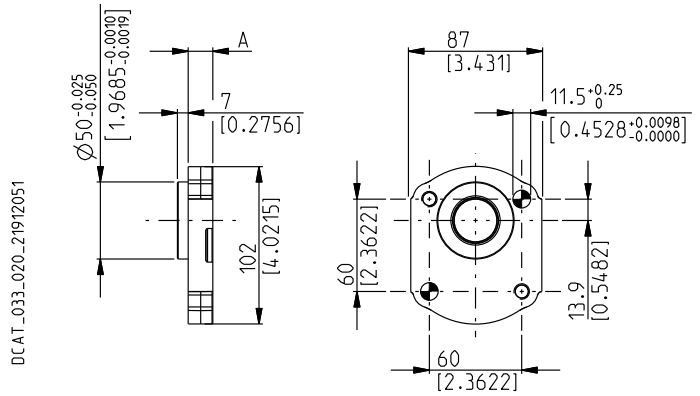
X Available combination

02/07.2006

POLARIS 20 MOUNTING FLANGES AND TABLE OF COMPATIBILITY

GERMAN 2 BOLTS B4

Material: cast iron and aluminium **O**



Replaces: 01/10.03

DRIVE SHAFTS
See page 53 ÷ 55

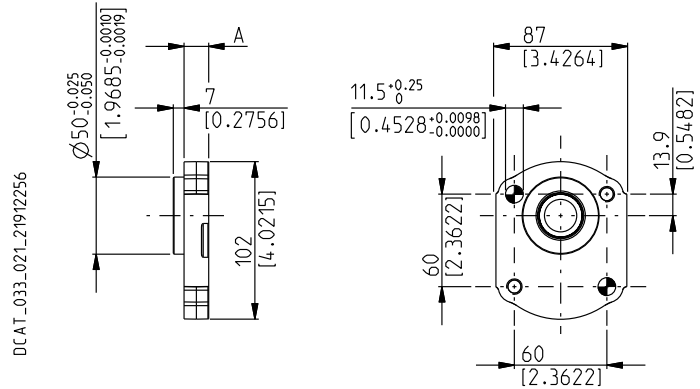
VERSIONS See page 47	A mm (in)	54	03	12	31	49	54	82
0	16 (0.63)	#	X	X	X	X	X	X
5	41,6 (1.6378)	X	X			X	X	X

Standard combination

X Available combination

GERMAN 2 BOLTS B5

Material: cast iron and aluminium **O**



O 02/07.2006

DRIVE SHAFTS
See page 53 ÷ 55

VERSIONS See page 47	A mm (in)	54	03	12	31	49	54	82
0	16 (0.63)	#	X	X	X	X	X	X
5	41,6 (1.6378)	X	X			X	X	X

Standard combination

X Available combination

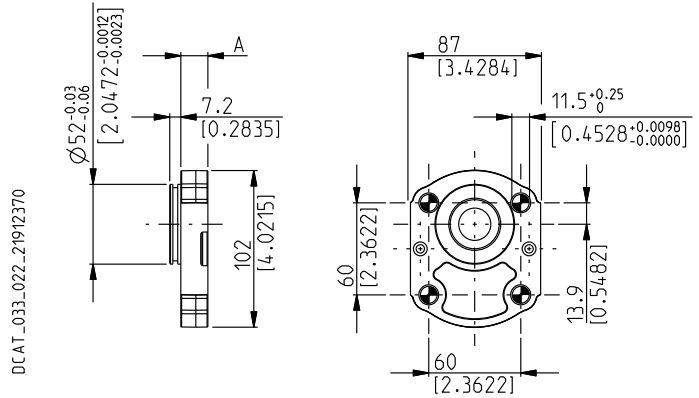
POLARIS 20 MOUNTING FLANGES AND TABLE OF COMPATIBILITY

Replaces: 01/10.03

GERMAN 4 BOLTS

B6

Material: cast iron and aluminium



DCAT_033_022_21912370

DRIVE SHAFTS

See page 53 ÷ 55

VERSIONS See page 47	A mm (in)	95	07	12
0	17,7 (0.6968)	#	X	X
5	43,3 (1.747)	X		

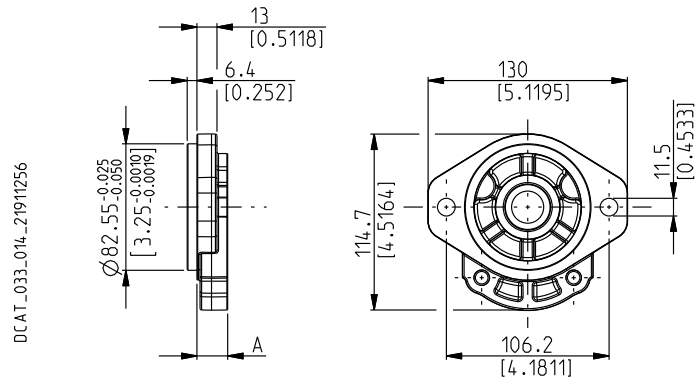
Standard combination

X Available combination

SAE "A" 2 BOLTS

S1

Material: cast iron and aluminium



DCAT_033_014_21911256

DRIVE SHAFTS

See page 53 ÷ 55

VERSIONS See page 47	A mm (in)	01	03	04	07	12	31	32	46	49	50	54	82
0	20 (0.787)	#	#	X	#	X	#	X	X	#	X	X	X
5	45,6 (1.7953)		X							X	X	X	X

Standard combination

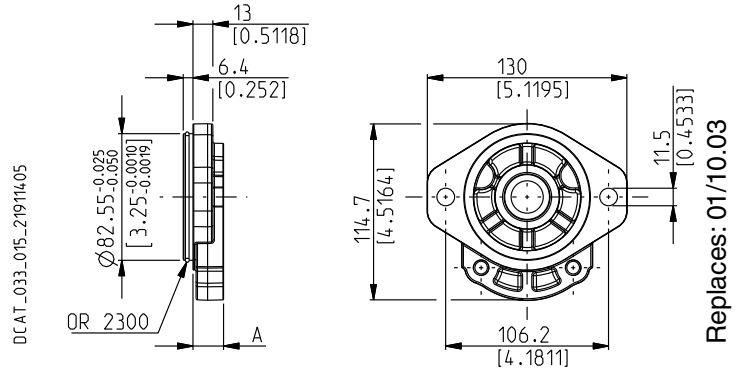
X Available combination

02/07.2006

POLARIS 20 MOUNTING FLANGES AND TABLE OF COMPATIBILITY

SAE "A" 2 BOLTS S2

Material: cast iron and aluminium ○



DRIVE SHAFTS
See page 53 ÷ 55

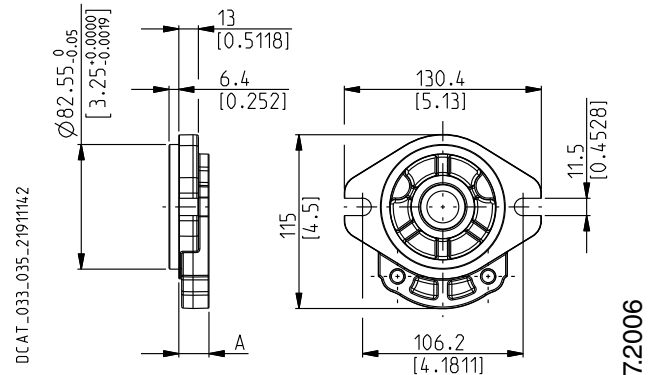
VERSIONS See page 47	A mm (in)	01	03	04	07	12	31	32	46	49	50	54	82
0	20 (0.7874)	#	#	X	#	X	#	X	X	#	X	X	X
5	45,6 (1.7953)		X							X	X	X	X

Standard combination

X Available combination

SAE "A" 2 BOLTS S9

Material: cast iron and aluminium ○



DRIVE SHAFTS
See page 53 ÷ 55

VERSIONS See page 47	A mm (in)	01	03	04	07	12	31	32	46	49	50	54	82
0	20 (0.7874)	#	#	X	#	X	#	X	X	#	X	X	X
5	45,6 (1.7953)		X							X	X	X	X

Standard combination

X Available combination

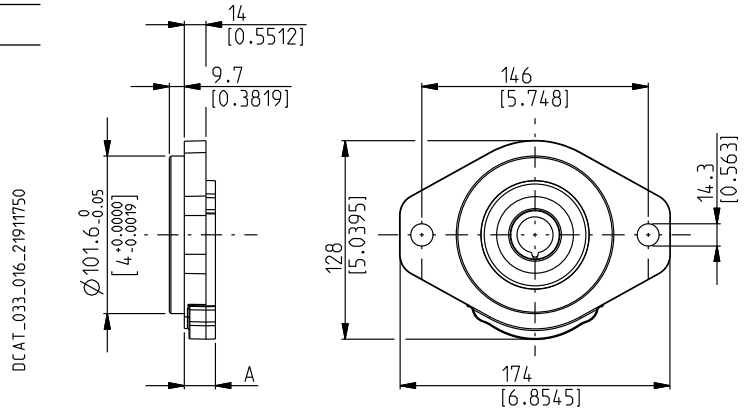
POLARIS 20 MOUNTING FLANGES AND TABLE OF COMPATIBILITY

Replaces: 01/10.03

SAE "B" 2 BOLTS

S5

Material: cast iron ○



DRIVE SHAFTS
See page 53 ÷ 55

VERSIONS See page 47	A mm (in)	04	32	49
0	20 (0.7874)	#	#	X
5	45,6 (1.7953)			X

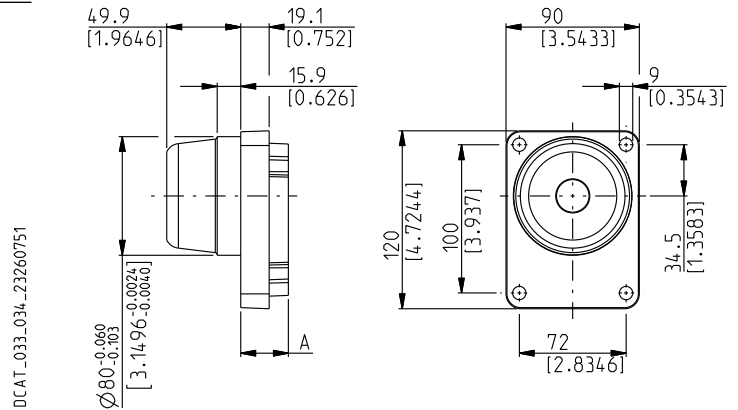
Standard combination

X Available combination

GERMAN

W8

Material: cast iron ○



DRIVE SHAFTS
See page 53 ÷ 55

VERSIONS See page 47	A mm (in)	55
W8	32,1 (1.2638)	#

Standard combination

X Available combination

○ 02/07.2006

IN/OUT PORTS TYPE


PORTS TYPE	SIDE PORTS												REAR PORTS					
	German		European		Split SSM		Spit SSS		Gas BSPP		SAE ODT		Gas BSPP		SAE ODT			
	IN	OUT	IN	OUT	IN	OUT	IN	OUT	IN	OUT	IN	OUT	IN	OUT	IN	OUT		
Pump type	IN	OUT	IN	OUT	IN	OUT	IN	OUT	IN	OUT	IN	OUT	IN	OUT	IN	OUT	IN	OUT
Motor type	OUT	IN	OUT	IN	OUT	IN	OUT	IN	OUT	IN	OUT	IN	OUT	IN	OUT	IN	OUT	IN
PL. 10•1	BB	BA							GC	GC	OB	OA	GC	GC	OB	OA		
PL. 10•1,5	BB	BA							GC	GC	OB	OA	GC	GC	OB	OA		
PL. 10•2	BB	BA							GC	GC	OB	OA	GC	GC	OB	OA		
PL. 10•2,5	BB	BA							GC	GC	OB	OA	GC	GC	OB	OA		
PL. 10•3,15	BB	BA							GC	GC	OB	OA	GC	GC	OB	OA		
PL. 10•4	BB	BA							GC	GC	OB	OA	GC	GC	OB	OA		
PL. 10•5	BB	BA							GD	GD	OB	OA	GD	GD	OB	OA		
PL. 10•5,8	BB	BA							GD	GD	OB	OA	GD	GD	OB	OA		
PL. 10•6,3	BB	BA							GD	GD	OB	OA	GD	GD	OB	OA		
PL. 10•8	BB	BA							GD	GD	OC	OB	GD	GD	OB	OB		
PL. 10•10	BB	BA							GD	GD	OC	OB	GD	GD	OB	OB		
PL. 20•4	BE	BC	EA	EA	MA	MA	SA	SA	GD	GD	OC	OC	GD	GD	OC	OC		
PL. 20•6,3	BE	BC	EA	EA	MA	MA	SA	SA	GD	GD	OC	OC	GD	GD	OC	OC		
PL. 20•7,2	BE	BC	EA	EA	MA	MA	SA	SA	GD	GD	OC	OC	GD	GD	OC	OC		
PL. 20•8	BE	BC	EA	EA	MA	MA	SA	SA	GD	GD	OC	OC	GD	GD	OC	OC		
PL. 20•9	BE	BC	EA	EA	MA	MA	SA	SA	GD	GD	OC	OC	GD	GD	OC	OC		
PL. 20•10,5	BE	BC	EA	EA	MA	MA	SA	SA	GD	GD	OC	OC	GD	GD	OC	OC		
PL. 20•11,2	BE	BC	EA	EA	MA	MA	SA	SA	GD	GD	OC	OC	GD	GD	OC	OC		
PL. 20•14	BE	BC	EB	EA	MB	MA	SB	SA	GE	GD	OD	OC	GE	GD	OD	OC		
PL. 20•16	BE	BC	EB	EA	MB	MA	SB	SA	GE	GD	OD	OC	GE	GD	OD	OC		
PL. 20•19	BE	BC	EB	EA	MB	MA	SB	SA	GE	GD	OD	OC	GE	GD	OD	OC		
PL. 20•20	BE	BC	EB	EA	MB	MA	SB	SA	GE	GD	OD	OC	GE	GD	OD	OC		
PL. 20•24,5	BE	BC	EB	EA	MC	MB	SC	SB	GE	GD	OD	OC	GE	GD	OD	OC		
PL. 20•25	BE	BC	EB	EA	MC	MB	SC	SB	GE	GD	OD	OC	GE	GD	OD	OC		
PL. 20•27,8	BE	BC	EB	EA	MC	MB	SC	SB	GE	GD	OD	OC	GE	GD	OD	OC		
PL. 20•31,5	BE	BC	EB	EA	MC	MB	SC	SB	GE	GD	OD	OC	GE	GD	OD	OC		
PL. 30•22	BM	BL	ED	EB	MB	MA	SB	SA	GF	GF	OF	OD						
PL. 30•27	BM	BL	ED	EB	MC	MB	SC	SB	GF	GF	OF	OD						
PL. 30•34	BM	BL	ED	EB	MC	MB	SC	SB	GF	GF	OF	OD						
PL. 30•38	BM	BL	ED	EB	MD	MC	SD	SC	GF	GF	OG	OF						
PL. 30•43	BM	BL	ED	EB	MD	MC	SD	SC	GF	GF	OG	OF						
PL. 30•46	BM	BL	ED	EB	MD	MC	SD	SC	GF	GF	OG	OF						
PL. 30•51	BM	BL	ED	EB	MD	MC	SD	SC	GF	GF	OG	OF						
PL. 30•61	BM	BL	ED	EB	ME	MD	SE	SD	GG	GF	OH	OG						
PL. 30•73	BM	BL	EF	ED	ME	MD	SE	SD	GG	GF	OH	OG						
PL. 30•82	BM	BL	EF	ED	ME	MD	SE	SD	GH	GG	OH	OG						
PL. 30•90	BM	BL	EF	ED	MF	ME	SF	SE	GH	GG	OH	OG						

01/10.03

EXTERNAL DRAIN PORTS

IN/OUT PORTS TYPE	SIDE PORTS						REAR PORTS	
	German	European	Split SSM	Spit SSS	Gas BSPP	SAE ODT	Gas BSPP	SAE ODT
PL. 10	GA	-	-	-	GA	03	GA	03
PL. 20	TA	GB	GB	03	GB	03	GB	03
PL. 30	GC	GC	GC	OA	GC	OA	-	-


DRAIN PORTS SIZES

 Tightening torque for low pressure side port

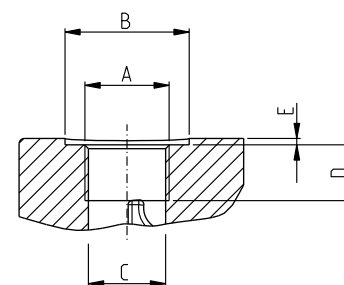
GAS STRAIGHT THREAD PORTS

BSPP

British standard pipe parallel (55°) conforms to UNI - ISO 228

CODE	NOMINAL SIZE	A	Ø B	Ø C	D	E	 Nm (lbf in)
			mm (in)	mm (in)	mm (in)	mm (in)	
GA	1/8"	G 1/8	16,5 (0.6496)	8,75 (0.3444)	12 (0.4724)	1 (0.0394)	5 ^{+0,25} (44 ÷ 46)
GB	1/4"	G 1/4	21,5 (0.8465)	12 (0.4724)	15 (0.5906)	1,5 (0.0591)	15 ⁺¹ (133 ÷ 142)


DCAT_006_026_21064779



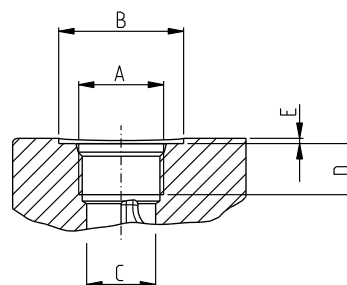
METRIC STRAIGHT THREAD PORTS ISO 6149

METRIC

Metric thread ISO 60° conforms to ISO/R 262

CODE	A	Ø B	Ø C	D	E	 Nm (lbf in)
		mm (in)	mm (in)	mm (in)	mm (in)	
TA	M 10x1	22 (0.8661)	9 (0.3543)	13 (0.5118)	0,5 (0.0197)	10 ^{+0,5} (89 ÷ 93)


DCAT_006_027_21060524



SAE STRAIGHT THREAD PORTS J514

ODT


American straight UNC-UNF 60° conforms to ANSI B 1.1


CODE	A	Ø B	Ø C	D	E	 Nm (lbf in)
		mm (in)	mm (in)	mm (in)	mm (in)	
03	7/16"-20 UNF-2B	21 (0.8267)	9,5 (0.3740)	14 (0.5512)	1 (0.0394)	12 ⁺¹ (106 ÷ 115)

Other drain ports are shown on subsequent pages.

01/10.03

PORTS SIZE

 Tightening torque for low pressure side port



 Tightening torque for high pressure side port [values obtained at 5075 psi (350 bar)]

For reversible rotation, please consult only the tightening torque for high pressure side port

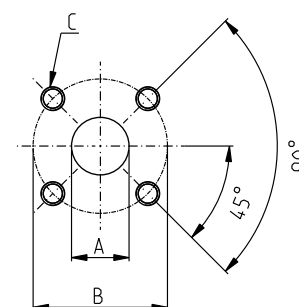
GERMAN FLANGED PORTS - 4 Bolts

GERMAN

Metric thread ISO 60° conforms to ISO/R 262

CODE	A	B	C		
	mm (in)	mm (in)	Thread Depth mm (in)	Nm (lbf in)	Nm (lbf in)
BA	8 (0.3150)	30 (1.1811)	M6 12 (0.4724)	8 ^{+0.5} (71 ÷ 75)	8 ^{+0.5} (71 ÷ 75)
BB	13 (0.5118)	30 (1.1811)	M6 12 (0.4724)	8 ^{+0.5} (71 ÷ 75)	8 ^{+0.5} (71 ÷ 75)
BC	15 (0.5906)	35 (1.3780)	M6 12 (0.4724)	8 ^{+0.5} (71 ÷ 75)	8 ^{+0.5} (71 ÷ 75)
BE	20 (0.7874)	40 (1.5748)	M6 12 (0.4724)	8 ^{+0.5} (71 ÷ 75)	8 ^{+0.5} (71 ÷ 75)
BL	19 (0.7480)	55 (2.1654)	M8 18 (0.7087)	15 ⁺¹ (133 ÷ 142)	20 ⁺¹ (177 ÷ 186)
BM	27 (1.0630)	55 (2.1654)	M8 18 (0.7087)	15 ⁺¹ (133 ÷ 142)	20 ⁺¹ (177 ÷ 186)



DCAT_033_028_17661888



EUROPEAN FLANGED PORTS - 4 Bolts

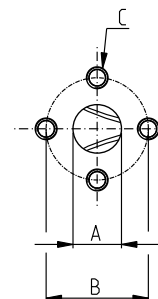
EUROPEAN

Metric thread ISO 60° conforms to ISO/R 262

CODE	A	B	C		
	mm (in)	mm (in)	Thread Depth mm (in)	Nm (lbf in)	Nm (lbf in)
EA	13 (0.5118)	30 (1.1811)	M 6 13 (0.5118)	8 ^{+0.5} (71 ÷ 75)	8 ^{+0.5} (71 ÷ 75)
EB	19 (0.7480)	40 (1.5748)	M 8 14 (0.5512)	15 ⁺¹ (133 ÷ 142)	15 ⁺¹ (133 ÷ 142)
			M 8 (◆) 18 (0.7087)	15 ⁺¹ (◆) (133 ÷ 142)	15 ⁺¹ (◆) (133 ÷ 142)
ED	27 (1.0630)	51 (2.0079)	M 10 18 (0.7087)	20 ⁺¹ (177 ÷ 186)	30 ^{+2.5} (266 ÷ 288)
EF	33 (1.2992)	62 (2.4409)	M 12 18 (0.7087)	25 ⁺¹ (221 ÷ 230)	50 ^{+2.5} (443 ÷ 465)


01/10.03


DCAT_006_024_21060533



(◆) For POLARIS 30

PORTS SIZES

 Tightening torque for low pressure side port



 Tightening torque for high pressure side port [values obtained at 5075 psi (350 bar)]

For reversible rotation, please consult only the tightening torque for high pressure side port

SAE FLANGED PORTS J518 - Standard pressure series 3000 PSI

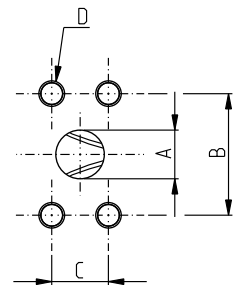
SSM

Metric thread ISO 60° to ISO/R 262

CODE	A	B	C	D		
	mm (in)	mm (in)	mm (in)	Thread Depth mm (in)	Nm (lbf in)	Nm (lbf in)
MA	12,5 (0.4921)	38,1 (1.50)	17,5 (0.6890)	M 8	15 ⁺¹	15 ⁺¹
				14 (0.5512)	(133 ÷ 142)	(133 ÷ 142)
				M 8 (◆)	20 ⁺¹ (◆)	20 ⁺¹ (◆)
MB	19 (0.7480)	47,6 (1.8740)	22,2 (0.8740)	22 (0.8661)	(177 ÷ 186)	(177 ÷ 186)
				M 10	20 ⁺¹	25 ⁺¹
				14 (0.5512)	(177 ÷ 186)	(266 ÷ 288)
MC	25,4 (1.0000)	52,4 (2.0630)	26,2 (1.0315)	M 10 (◆)	20 ⁺¹ (◆)	35 ^{+2,5} (◆)
				22 (0.8661)	(177 ÷ 186)	(310 ÷ 332)
				M 10	20 ⁺¹	25 ⁺¹
MD	30,5 (1.2008)	58,7 (2.3110)	30,2 (1.1890)	14 (0.5512)	(177 ÷ 186)	(266 ÷ 288)
				M 10 (◆)	20 ⁺¹ (◆)	35 ^{+2,5} (◆)
				22 (0.8661)	(177 ÷ 186)	(310 ÷ 332)
ME	39,3 (1.5472)	69,8 (2.7480)	35,7 (1.4055)	M 12	30 ^{+2,5}	60 ⁺⁵
				22 (0.8661)	(266 ÷ 288)	(531 ÷ 575)
MF	51 (2.0079)	77,8 (3.0630)	42,9 (1.6890)	M 12	30 ^{+2,5}	60 ⁺⁵
				22 (0.8661)	(266 ÷ 288)	(531 ÷ 575)

(◆) For POLARIS 30



DCAT_006_025_21064252



SAE FLANGED PORTS J518 - Standard pressure series 3000 PSI

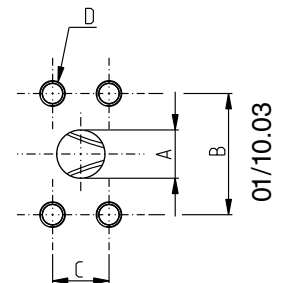
SSS

American straight thread UNC-UNF 60° conforms to ANSI B 1.1

CODE	A	B	C	D		
	mm (in)	mm (in)	mm (in)	Thread Depth mm (in)	Nm (lbf in)	Nm (lbf in)
SA	12,5 (0.4921)	38,1 (1.50)	17,5 (0.6890)	5/16-18 UNC-2B	15 ⁺¹	15 ⁺¹
				14 (0.5512)	(133 ÷ 142)	(133 ÷ 142)
				5/16-18 UNC-2B (◆)	20 ⁺¹ (◆)	20 ⁺¹ (◆)
SB	19 (0.7480)	47,6 (1.8740)	22,2 (0.8740)	22 (0.8661)	(177 ÷ 186)	(177 ÷ 186)
				3/8-16 UNC-2B	20 ⁺¹	20 ⁺¹
				14 (0.5512)	(177 ÷ 186)	(177 ÷ 186)
SC	25,4 (1.0000)	52,4 (2.0630)	26,2 (1.0315)	3/8-16 UNC-2B (◆)	30 ^{+2,5} (◆)	20 ⁺¹ (◆)
				22 (0.8661)	(266 ÷ 288)	(177 ÷ 186)
				3/8-16 UNC-2B	20 ⁺¹	25 ⁺¹
SD	30,5 (1.2008)	58,7 (2.3110)	30,2 (1.1890)	14 (0.5512)	(177 ÷ 186)	(221 ÷ 230)
				3/8-16 UNC-2B (◆)	20 ⁺¹ (◆)	30 ^{+2,5} (◆)
				22 (0.8661)	(177 ÷ 186)	(266 ÷ 288)
SE	39,3 (1.5472)	69,8 (2.7480)	35,7 (1.4055)	7/16-14 UNC-2B	20 ⁺¹	45 ^{+2,5}
				22 (0.8661)	(177 ÷ 186)	(398 ÷ 420)
SF	51 (2.0079)	77,8 (3.0630)	42,9 (1.6890)	1/2-13 UNC-2B	30 ^{+2,5}	70 ⁺⁵
				22 (0.8661)	(266 ÷ 288)	(620 ÷ 664)

(◆) For POLARIS 30

DCAT_006_028_21060740



01/10.03

PORTS SIZES



Tightening torque for low pressure side port



Tightening torque for high pressure side port [values obtained at 5075 psi (350 bar)]

For reversible rotation, please consult only the tightening torque for high pressure side port

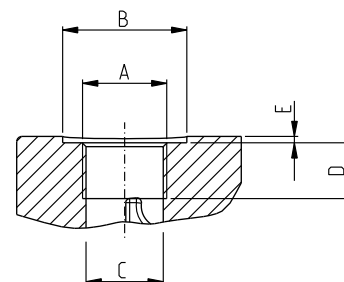
Replaces: 01/10.03

GAS STRAIGHT THREAD PORTS

BSPP

British standard pipe parallel (55°) conforms to UNI - ISO 228

DCAT_006_026_21064779



CODE	Nominal size	A	Ø B	Ø C	D	E		
			mm (in)	mm (in)	mm (in)	mm (in)	Nm (lbf in)	Nm (lbf in)
GC	3/8"	G 3/8	30 (#) (1.1811)	15 (0.5906)	10 (#) (0.3937)	2 (#) (0.0787)	15 ⁺¹ (#) (133 ÷ 142)	—
			—		14 (0.5512)	—	15 ⁺¹ (133 ÷ 142)	25 ⁺¹ (221 ÷ 230)
GD	1/2"	G 1/2	—	19 (0.7480)	14 (0.5512)	—	20 ⁺¹ (177 ÷ 186)	50 ^{+2,5} (443 ÷ 465)
			—		17 (◆) (0.6693)	—	—	—
GE	3/4"	G 3/4	—	24,5 (0.9646)	18 (0.7087)	—	30 ^{+2,5} (266 ÷ 288)	90 ⁺⁵ (797 ÷ 841)
GF	1"	G 1	—	30,5 (1.2008)	18 (0.7086)	—	50 ^{+2,5} (443 ÷ 465)	130 ⁺¹⁰ (1151 ÷ 1239)
GG	1" 1/4	G 1 1/4	—	39 (1.5354)	22 (0.8661)	—	60 ⁺⁵ (531 ÷ 575)	170 ⁺¹⁰ (1505 ÷ 1593)
GH	1" 1/2	G 1 1/2	—	45 (1.7716)	24 (0.9448)	—	70 ⁺⁵ (620 ÷ 664)	210 ⁺¹⁵ (1859 ÷ 1992)

(#) = Drain port

(◆) For POLARIS 20

02/07.2006

PORTS SIZES



Tightening torque for low pressure side port



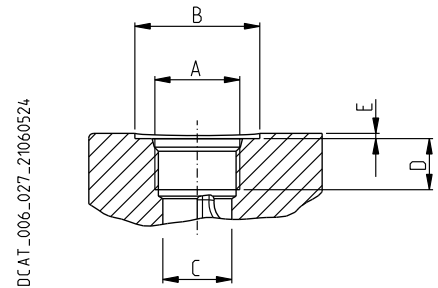
Tightening torque for high pressure side port [values obtained at 5075 psi (350 bar)]

For reversible rotation, please consult only the tightening torque for high pressure side port

SAE STRAIGHT THREAD PORTS J514

ODT

American straight thread UNC-UNF 60° conforms to ANSI B 1.1



CODE	Nominal size	A	Ø B		D	E		
			mm (in)	mm (in)				
OA	3/8"	9/16" - 18 UNF - 2B	26 (1.0236)	13 (0.5118)	15 (0.5906)	1 (0.03934)	15 ⁺¹ (133 ÷ 142)	25 ⁺¹ (221 ÷ 230)
						2 (#) (0.0787)	15 ⁺¹ (#) (133 ÷ 142)	—
OB	1/2"	3/4" - 16 UNF - 2B	32 (1.2598)	17,5 (0.690)	15 (0.5906)	—	20 ⁺¹ (177 ÷ 186)	45 ^{+2,5} (398 ÷ 420)
OC	5/8"	7/8" - 14 UNF - 2B	35 (1.3780)	20,5 (0.8071)	15 (◆) (0.5906)	0,5 (0.0197)	30 ^{+2,5} (266 ÷ 288)	70 ⁺⁵ (620 ÷ 664)
					17 (0.6693)			
OD	3/4"	1 1/16" - 12 UNF - 2B	42 (1.6535)	24,8 (0.9764)	20 (0.7874)	0,5 (0.0197)	40 ^{+2,5} (354 ÷ 376)	120 ⁺¹⁰ (1062 ÷ 1151)
OF	1"	1 5/16" - 12 UNF - 2B	49 (1.9291)	30,5 (1.2008)	20 (0.7874)	0,5 (0.0197)	60 ⁺⁵ (531 ÷ 575)	170 ⁺¹⁰ (1505 ÷ 1593)
OG	1" 1/4	1 5/8" - 12 UNF - 2B	58 (2.2835)	39,1 (1.5394)	20 (0.7874)	0,5 (0.0197)	70 ⁺⁵ (620 ÷ 664)	200 ⁺¹⁵ (1770 ÷ 1858)
OH	1" 1/2	1 7/8" - 12 UNF - 2B	65 (2.5591)	45 (1.7717)	20 (0.7874)	0,5 (0.0197)	100 ⁺⁵ (885 ÷ 929)	270 ⁺¹⁵ (2389 ÷ 2522)

(#) = Drain port

(◆) For POLARIS 10

01/10.03