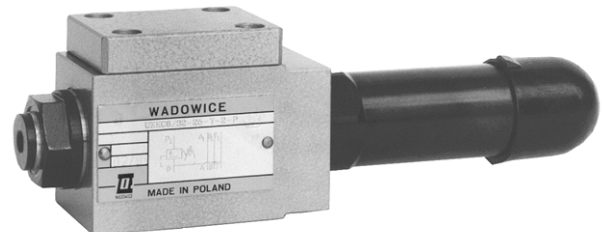
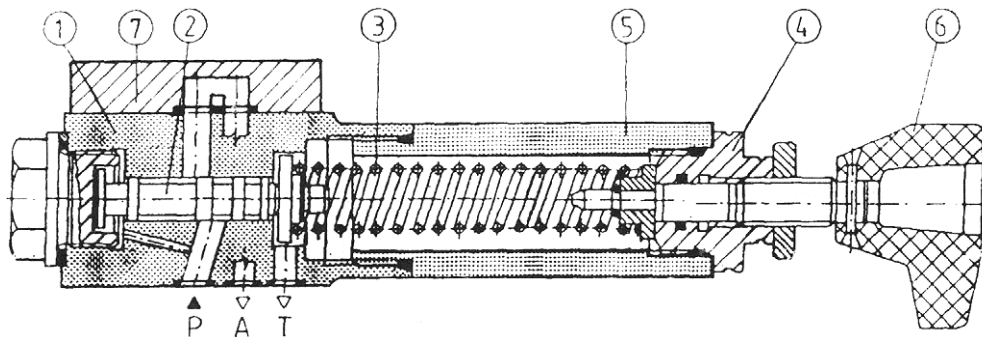


Pressure sequence valve type UZKB 6 serves to control pressure in hydraulic systems. It can be well used as a direct operated pressure relief valve.



OPERATION DESCRIPTION



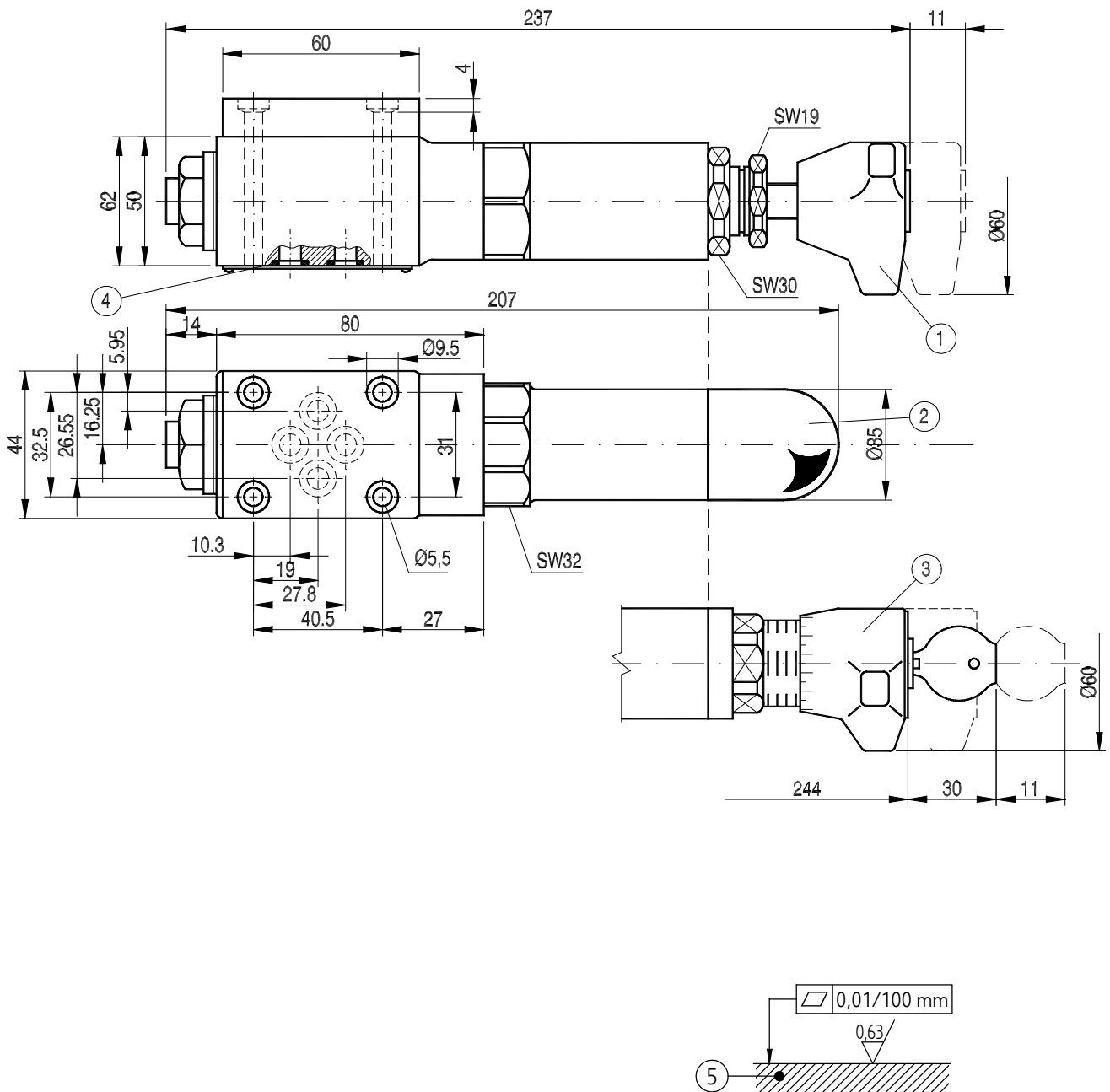
Spring force is adjusted by turning the handwheel (6) of the setting element. If control pressure overcomes the resistance of the spring (3), the control spool (2) moves and opens the connection P to P1.

The spool (2) in the housing (1) is pressure-loaded from port P and from opposite side spring (3) - loaded in relation to the spring deflection.

TECHNICAL DATA

Hydraulic fluid	Mineral oil, phosphate ester
Pressure in line A, P	up to 31,5 MPa
Adjustable sequence pressure (at T = 0 MPa)	up to 21 MPa
Pressure in line T	up to 1,5 MPa
Nominal fluid viscosity	37 mm ² at temp. of 328 K
Viscosity range	2, 8 to 380 mm ² /s
Optimum working temperature (fluid in a tank)	313 - 328 K
Fluid temperature range	243 - 343 K
Required filtration	16 μm
Recommended filtration	10 μm
Weight	~ 1.2 kg

OVERALL AND CONNECTION DIMENSIONS

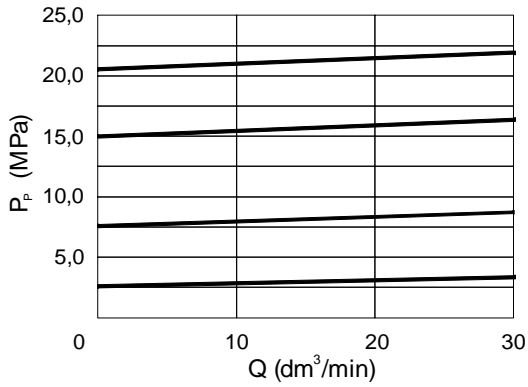


- 1 - Adjustment element 1 (hand knob)
- 2 - Adjustment element 2 (set screw with internal hexagon)
- 3 - Adjustment element 3 (lockable hand knob)
- 4 - O-ring 9,2 x 1,8 - 4 pcs/kit (P, T, A, B)
- 5 - Required surface finish of the mating subplate

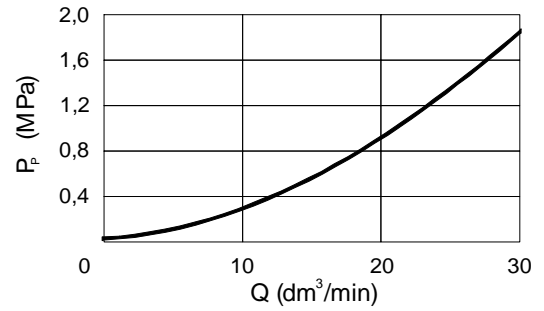
PERFORMANCE CURVES

measured at viscosity $\nu = 41 \text{ mm}^2/\text{s}$ and temperature $t = 50^\circ\text{C}$

Inlet pressure related to flow $p_p = f(Q)$

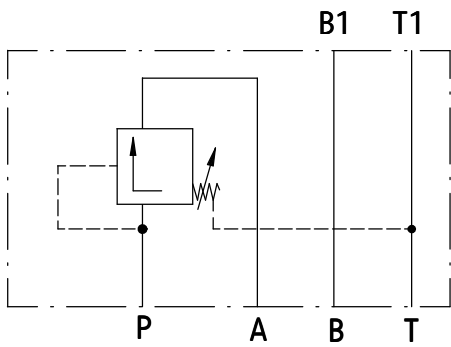


Minimum inlet pressure related to flow $p_p = f(Q)$

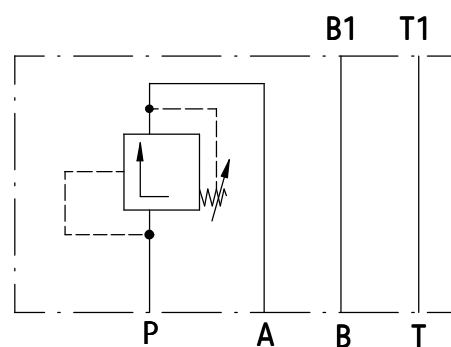


SCHEMES

Hydraulic schemes of valves type UZKB6...



version UZKB6/...-Y-...P



version UZKB6/...-W-...P

HOW TO ORDER

Orders coded in the way showed below should be forwarded to the manufacturer

UZKB 6 / - - - - - *

Series number

22 = 22
(20 - 29) - installation and connection dimensions unchanged

Pressure sequence range

up to 2.5 MPa = 25
up to 7.5 MPa = 75
up to 15,0 MPa = 150
up to 21,0 MPa = 210

Pilot supply and drain

Internal pilot supply
external pilot drain via port T = Y
Internal pilot supply,
internal pilot drain = W

Setting element

Handwheel = 1
Setting screw = 2
Lockable handweel = 3

Valve location

valve In line P = P

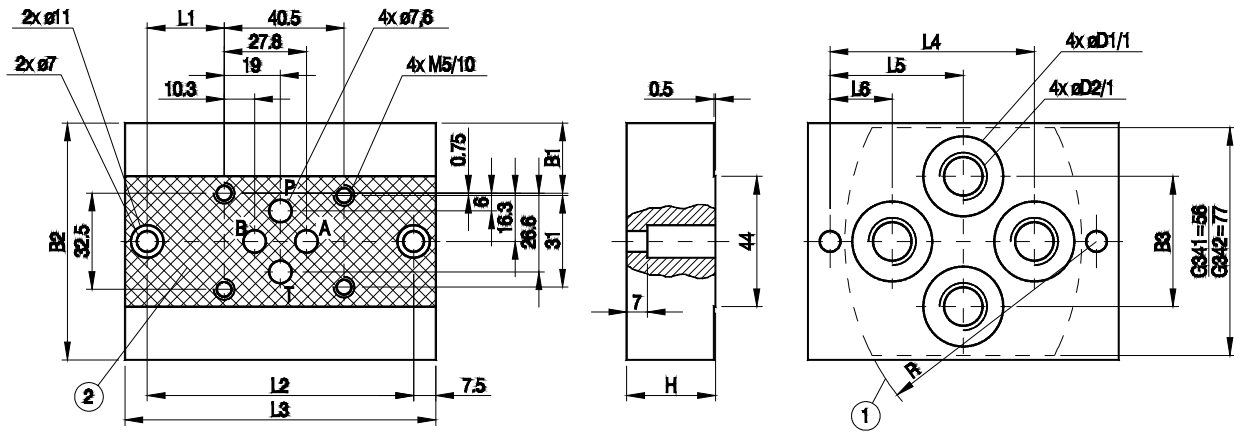
Sealing

Suitable for mineral oils = no design.
Suitable for phosphate-ester = V

Further details in clear text (to be agreed with the manufacturer).

Coding example:
UZKB 6/ 22 - 25 - Y - 2 - P

CONNECTING DIMENSIONS OF SUBPLATE



1 - Recess in subplate face

Typ	B1	B2	B3	L1	L2	L3	L4	L5	L6	H	D1	D2	R	T
G341/01	12.7	58	34	21	80	95	55	40	25	25	22	G 1/4	70	13
G342/01	23.7	80	44	26	90	105	69	45	21	30	28	G 3/8	85	13
G341/02	12.7	58	34	21	80	95	55	40	25	25	22	M14x1.5	70	15
G342/02	23.7	80	44	26	90	105	69	45	21	30	27	M16x1.5	85	15

Subplate weight G 341 ... ~ 1 kg

Subplate weight G 342 ... ~ 1.9 kg

Subplate has to be ordered separately.

Bolts fixing valve to subplate - 4 pcs M5 × 65- 10.9 per PN/M - 82302 (DIN 912 - 10.9)

Tightening torque - 9 Nm.

PONAR Wadowice S.A.
ul. Wojska Polskiego 29
34-100 Wadowice
tel. +48 33 488 21 00
fax. +48 33 488 21 03
www.ponar-wadowice.pl

