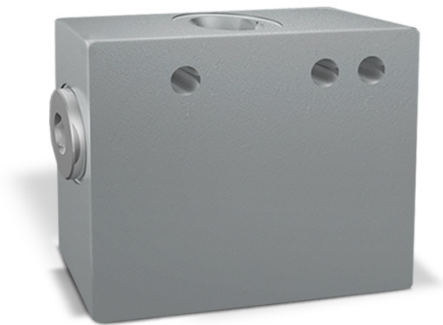
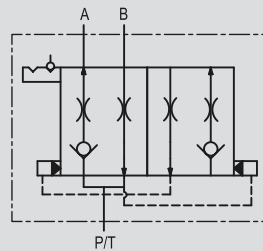


VALVOLA PER SEMINATRICE SEGNAFILE

SCHEMA IDRAULICO
HYDRAULIC DIAGRAMVALVE FOR SEEDING
ROW MARKER MACHINE**IMPIEGO:**

Valvola utilizzata su macchine seminatrici per movimentare i segnafile. Alimentando e scaricando la bocca P/T si permette l'inversione automatica della salita/discesa di 2 cilindri singolo o doppio effetto.

MATERIALI E CARATTERISTICHE:

Corpo: acciaio zincato.
Componenti interni: acciaio temprato termicamente e rettificato
Guarnizioni: BUNA N standard
Tenuta: trafilemento trascurabile

MONTAGGIO:

Collegare P/T all'alimentazione e A e B ai cilindri.

A RICHIESTA:

E' possibile fornire la valvola con le bocche A, B, P/T con:

- riduzione femmina 1/4"
- raccordo con terminale tubo DIN 12L

USE AND OPERATION:

This type of valves is used on seeding machines to handle the row marker. It allows the automatic ascent/descent inversion of single and double effect actuators, loading and unloading the port P/T.

MATERIALS AND FEATURES:

Body: zinc-plated steel.
Internal parts: hardened and ground steel.
Seals: BUNA N standard
Tightness: minor leakage.

APPLICATIONS:

Connect P/T to the power and A and B to the actuator.

ON REQUEST:

The valve can be supplied with:

- 1/4" female adaptation
- Fitting for DIN 12L hose connection



CODICE
CODE

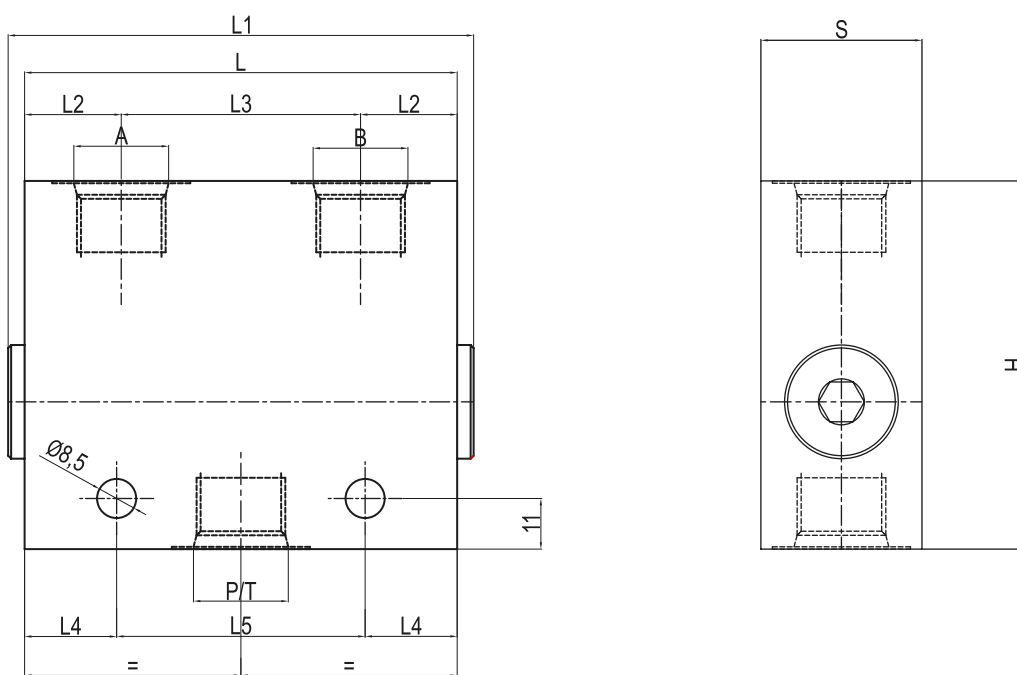
SIGLA
TYPE

PRESSIONE MAX
MAX PRESSURE
Bar

V1450

VDSF 3/4" - 16 UNF

350



14

CODICE CODE	SIGLA TYPE	A - B P / T SAE	L mm	L1 mm	L2 mm	L3 mm	L4 mm	L5 mm	L6 mm	L7 mm	H mm	S mm	PESO WEIGHT Kg.
V1450	VDSF 3/4" - 16 UNF	3/4" - 16	94	102	21	52	26	40	54	12	80	35	1,830