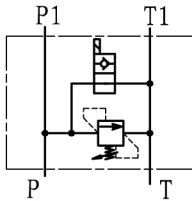


## PSRMWE6

### PUMP SIDE INLET ELEMENTS WITH PRIMARY PRESSURE RELIEF VALVE PSRMWE6

#### SYMBOL



#### Technical data

Operating pressure(MPa)	31.5	
Max flow rate (L/min)	50	
Port	Size	
P,T	Inch	G3/8,G1/2
	American	SAE8(3/4"16 UNF)
M	Inch	G1/4
	American	SAE4(7/16"20 UNF)

#### External Dimensions and Fittings

