

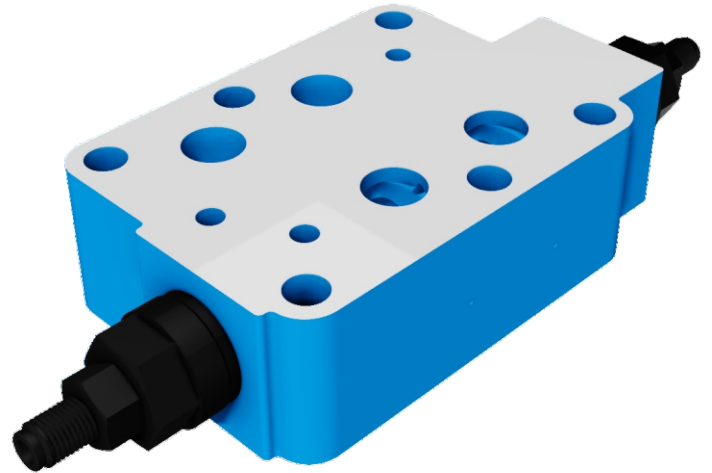


VALVOLE DI FLUSSO

Z2FS22

MODULAR THROTTLE/CHECK VALVES

Z2FS22 SERIES MODULAR THROTTLE/CHECK VALVES ARE USED TO RESTRICT FLOW IN ONE DIRECTION WHILE ALLOWING FREE-FLOW IN THE OPPOSITE DIRECTION AS CHECK VALVES.

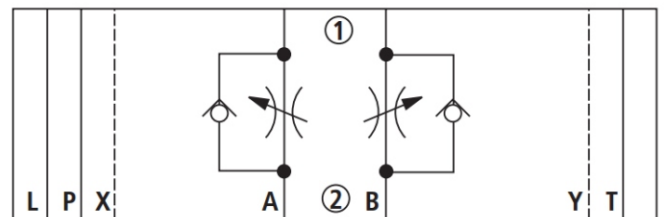
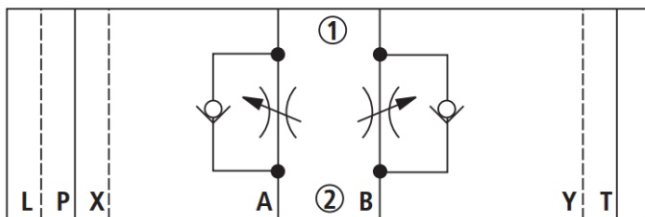


TECHNICAL DATA

SIZE	22
OPERATING PRESSURE (MPA)	35
MAX. FLOW RATE (L/MIN)	350
FLUID TEMPERATURE (°C)	-30 - 80
WEIGHT (KG)	8
VALVE BODY (MATERIAL)	CASTING PHOSPHATING SURFACE

SCHEMES

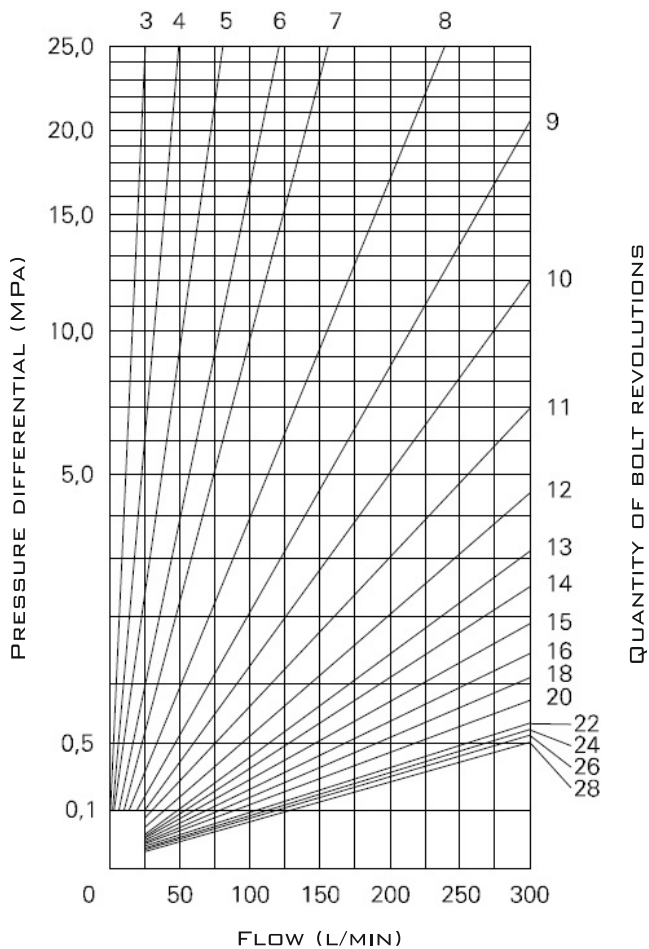
1 = COMPONENT SIDE, 2 = PLATE SIDE



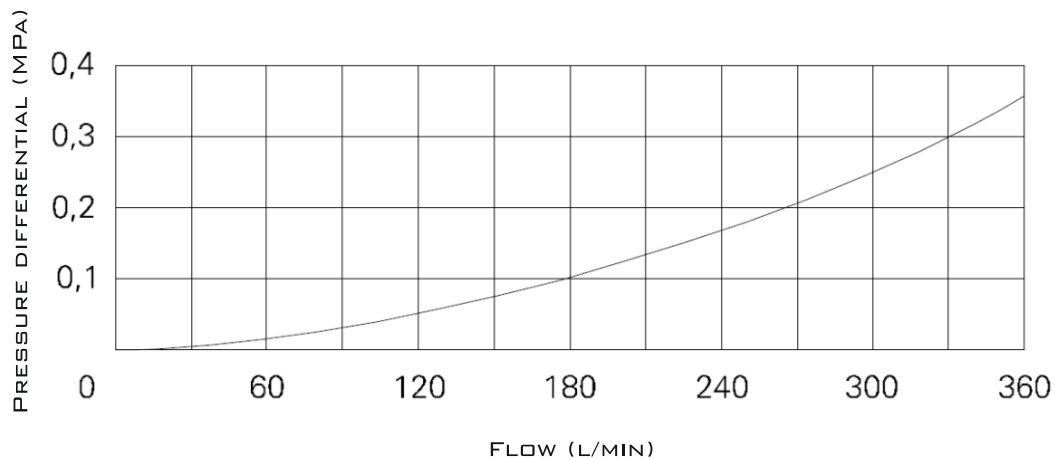


CHARACTERISTIC CURVES

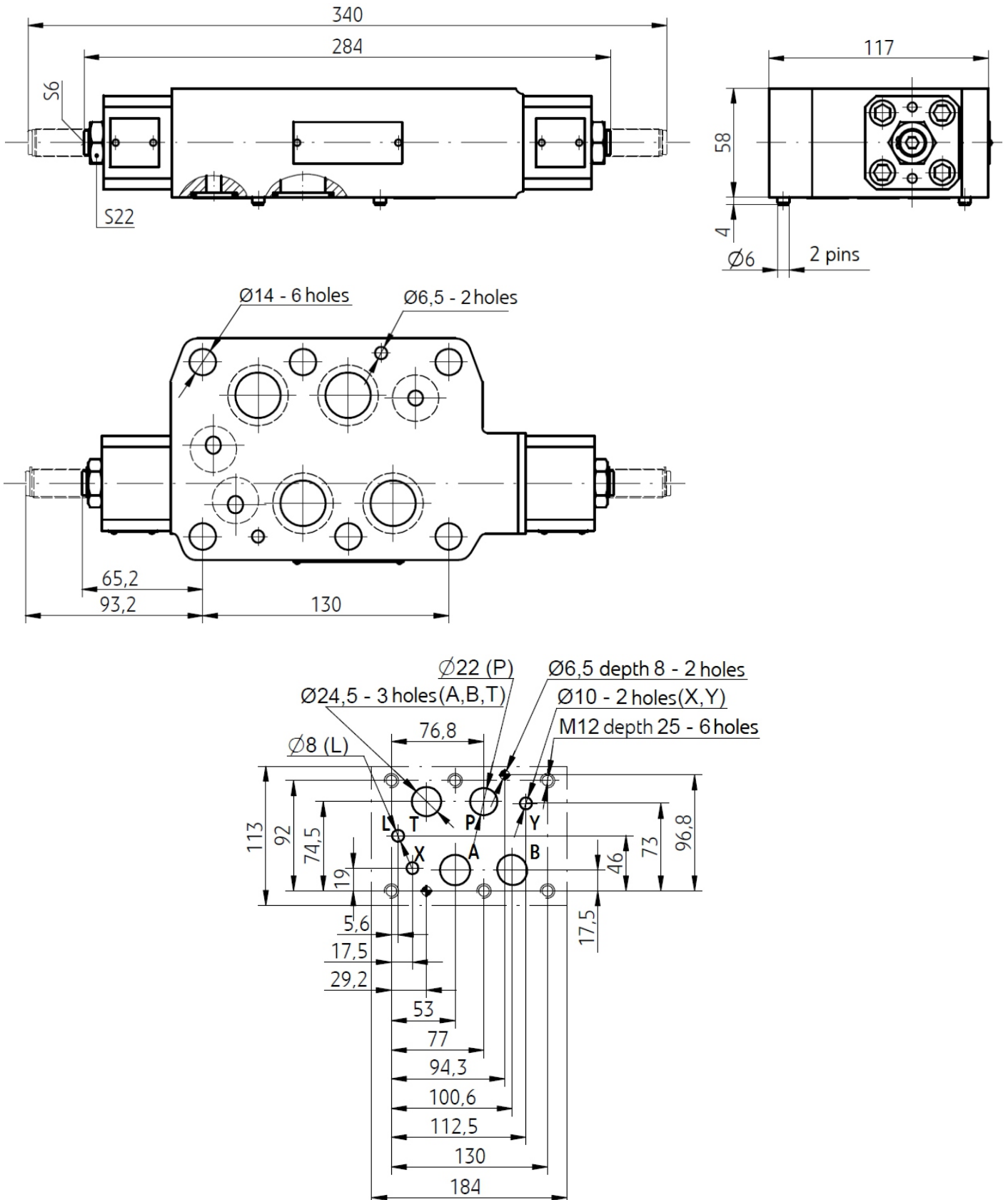
THROTTLE SETTING (ADJUSTMENT SCREW TURNS)



FLOW RESISTANCE CURVE FOR THE CHECK VALVE



SUBPLATE INSTALLATION DIMENSIONS



Z2FS22

VALVOLE DI FLUSSO



MODULAR THROTTLE/CHECK VALVES

ORDER CODE

Z2FS	22				
------	----	--	--	--	--

22=22 SIZE

3X=30-39 SERIES

S=INPUT THROTTLE
S2=OUTPUT THROTTLE

ADDITIONAL REMARKS

NO CODE=NBR SEALS
V=FKM SEALS