



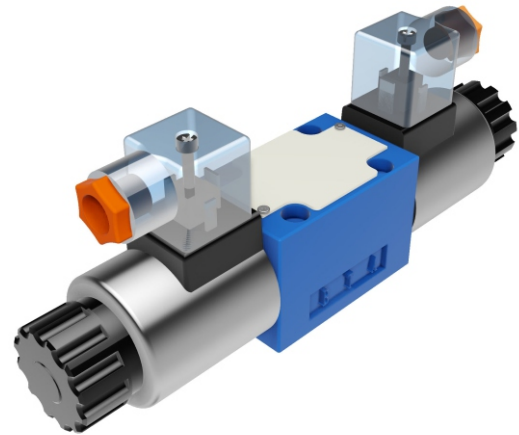
**DISTRIBUTORI
OLEODINAMICI**

WE6

**SOLENOID OPERATED
DIRECTIONAL CONTROL VALVES**

WE6 SERIES DIRECTIONAL CONTROL VALVES ARE SOLENOID OPERATED DIRECTIONAL SPOOL VALVES.

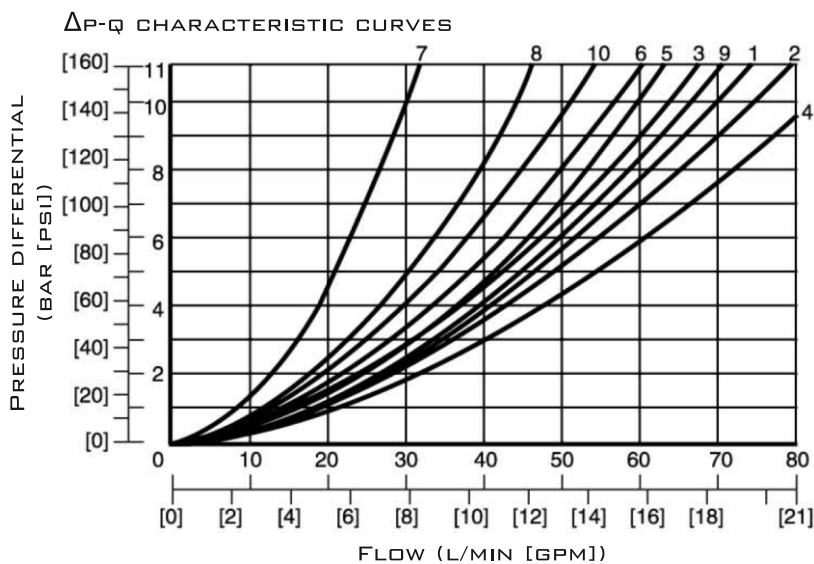
THESE VALVES ARE USED TO THE START, STOP AND DIRECTION OF FLOW.



TECHNICAL DATA

SIZE		6
MAX. FLOW RATE (L/MIN)		80
OPERATING PRESSURE (MPA)	A, B, P PORTS	31.5
	T PORT	16
WEIGHT (KG) WITHOUT/WITH HANDLE	1 SOLENOID	1.6/2.2
	2 SOLENOIDS	2.2/2.8
VALVE BODY (MATERIAL)		CASTING PHOSPHATING SURFACE

CHARACTERISTIC CURVES



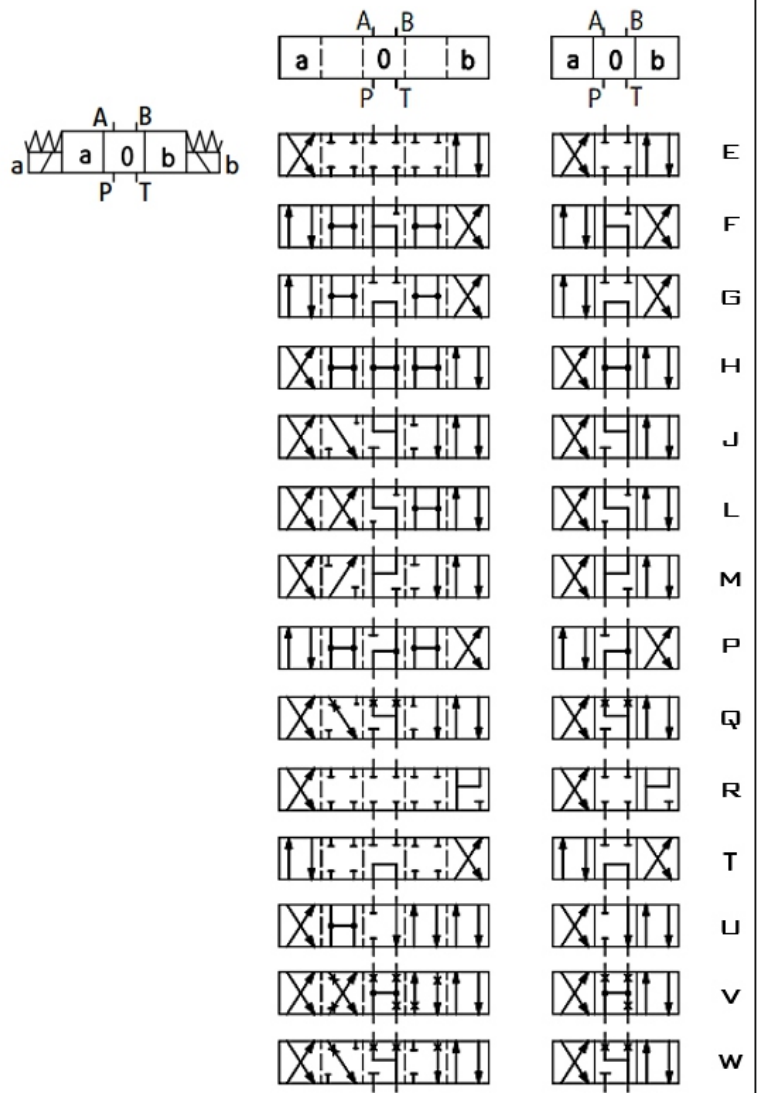
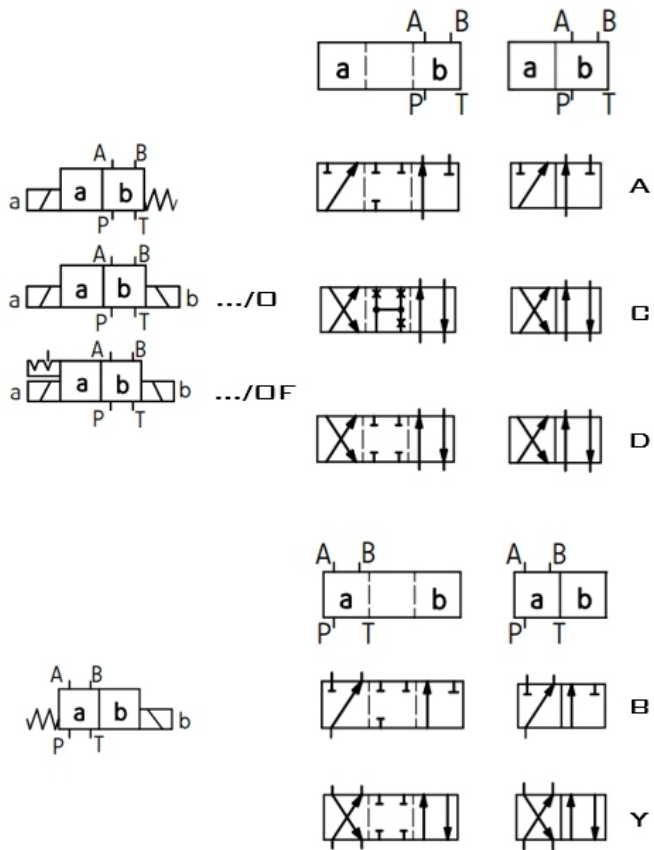
7 CURVE - SPOOL SYMBOL "R" IN SHIFTED POSITION B → A;
8 CURVE - SPOOL SYMBOL "G" AND "T" IN CENTRAL POSITION;
9 CURVE - SPOOL SYMBOL "H" AND "T" IN CENTRAL POSITION
P → T.

SPOOL SYMBOL	FLOW DIRECTION			
	P - A	P - B	A - T	B - T
A, B	3	3	-	-
C	1	1	3	1
D, Y	5	5	3	3
E	3	3	1	1
F	1	3	1	1
G	6	6	9	9
H	2	4	2	2
J, Q	1	1	2	1
L	3	3	4	9
M	2	4	3	3
P	3	1	1	1
R	5	5	4	-
T	10	10	9	9
U	3	3	9	4
V	1	2	1	1
W	1	1	2	2

SPOOL SYMBOLS

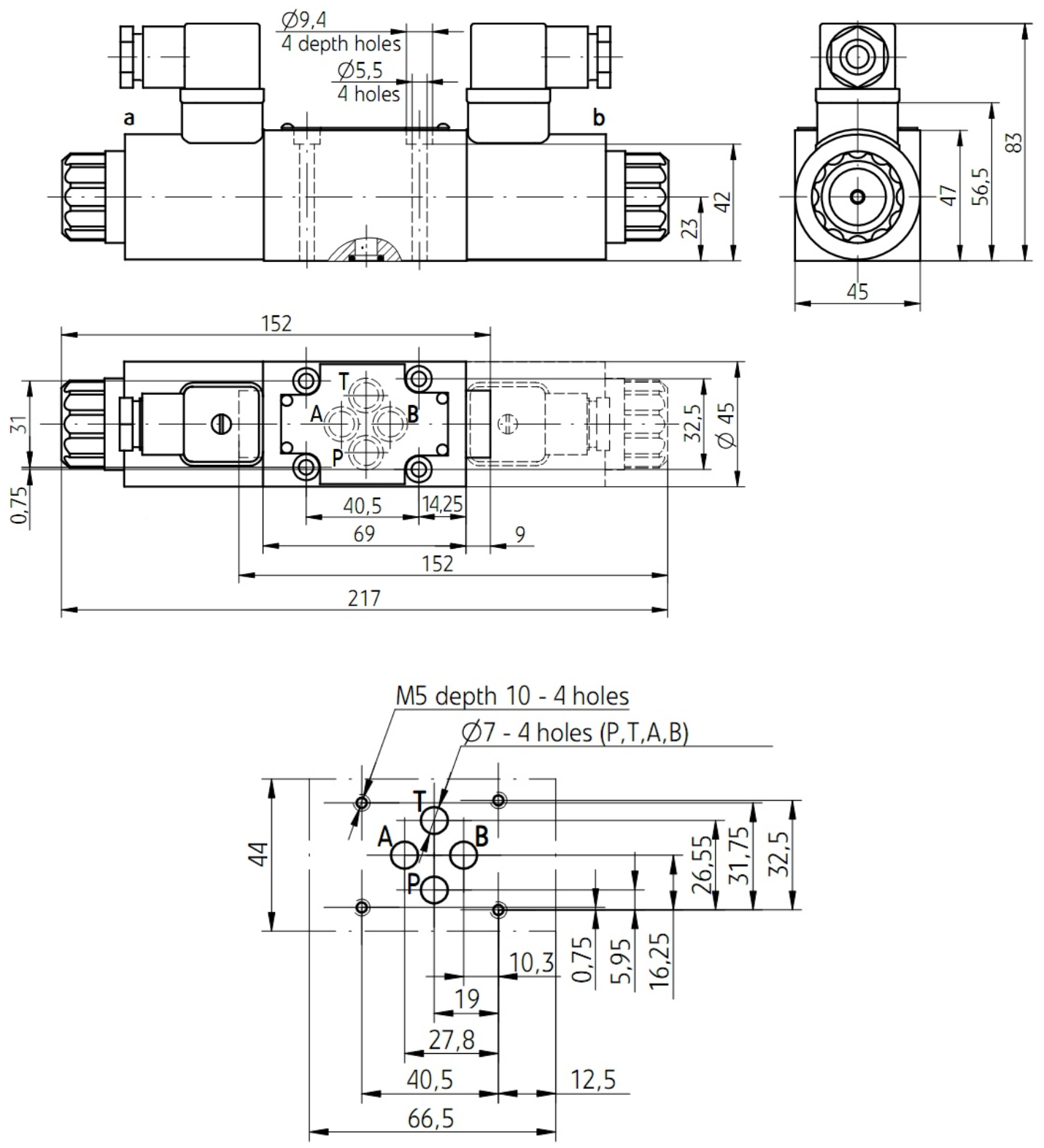
2-POSITION VALVES

3-POSITION VALVES



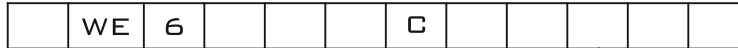
SEE ALSO:
WE10, WEH

SUBPLATE INSTALLATION DIMENSIONS





ORDER CODE



3 = 3-WAY
4 = 4-WAY

6 = 6 SIZE

SPOOL TYPE

50 = 50 SERIES
6X = 60-69 SERIES

NO CODE = WITH SPRING RETURN
O = WITHOUT SPRING RETURN
OF = WITHOUT SPRING RETURN
WITH DETENT

C = WET PIN SOLENOID WITH
REMOVABLE COIL

G12 = DC 12V
G24 = DC 24V
W220/W110 = 220/110V AC
W220R/W110R = 220/110V AC RECTIFIED

NO CODE = NBR SEALS
V = FKM SEALS

Z5L = SQUARE PLUG WITH LAMP
Z4 = SQUARE PLUG

NO CODE = WITHOUT THROTTLE INSERT
B0.8 = THROTTLE 0.8 MM
B1.0 = THROTTLE 1.0 MM
B1.2 = THROTTLE 1.2 MM

N9 = WITH CONCEALED HAND EMERGENCY
NO CODE = WITHOUT HAND EMERGENCY