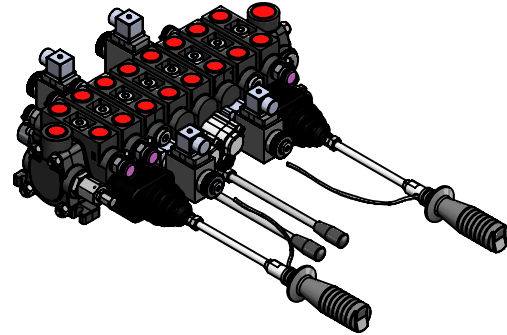
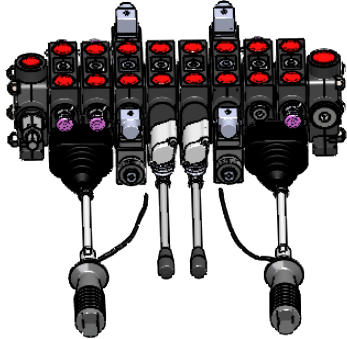


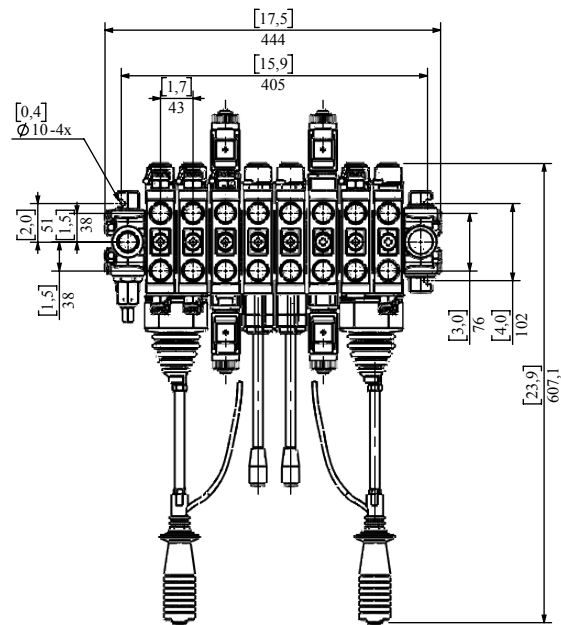
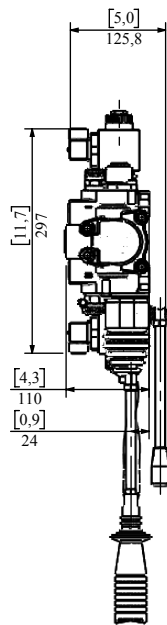
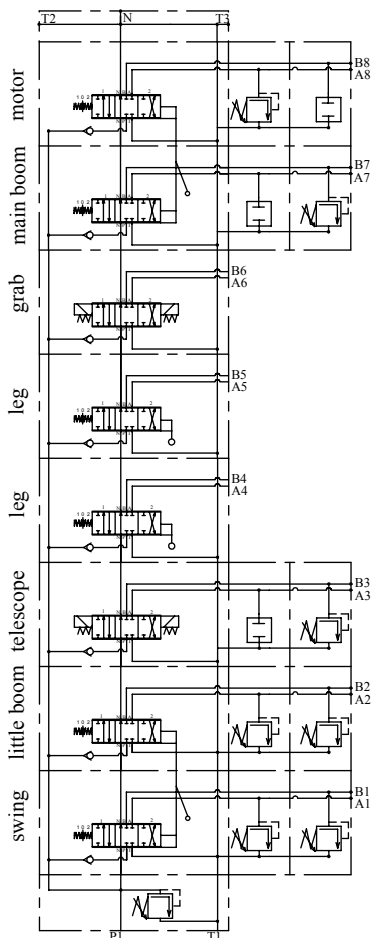
Stackable valve for forest crane applications with manual and electric control



Sectional directional control valve with 8 elements (8ZC70) operated by mechanical joysticks with integrated switches and manual operators. Also available with spool positioners with restrictions (1rAB) for regulating rotor speed.

Nominal flow rate	70 l/min	18 US gpm
Max. flow rate	80 l/min	21 US gpm

Max. pressure	250 bar	3625 psi
Max. pressure on ports	300 bar	4350 psi
Max. pressure on tank line	50 bar	725 psi



Standard ON/OFF coils
12 / 24 V - 60 W

Standard thread					
	A, B	P	T1, T2, T3	Standard	N
G (BSP)	G 1/2	G 1/2	G 3/4	DIN 3852-2	M26x1,5-6H
S (UNF)	7/8-14 (SAE10)	7/8-14 (SAE 10)	1 1/16-12 (SAE 12)	ISO 11926	M26x1,5-6H