

STATIC
LOAD



60 kN

DYNAMIC
LOAD



30 kN

TORQUE
at 25MPa



1850 Nm

OILFLOW



25 l/min

WEIGHT



39 kg



DOUBLE
BEARING

Grapple open
G1/2" Max 250 bar

Rotate left/right
G1/2" Max 250 bar

Rotator frame L80 ø35

Grapple close
G1/2" Max 300 bar

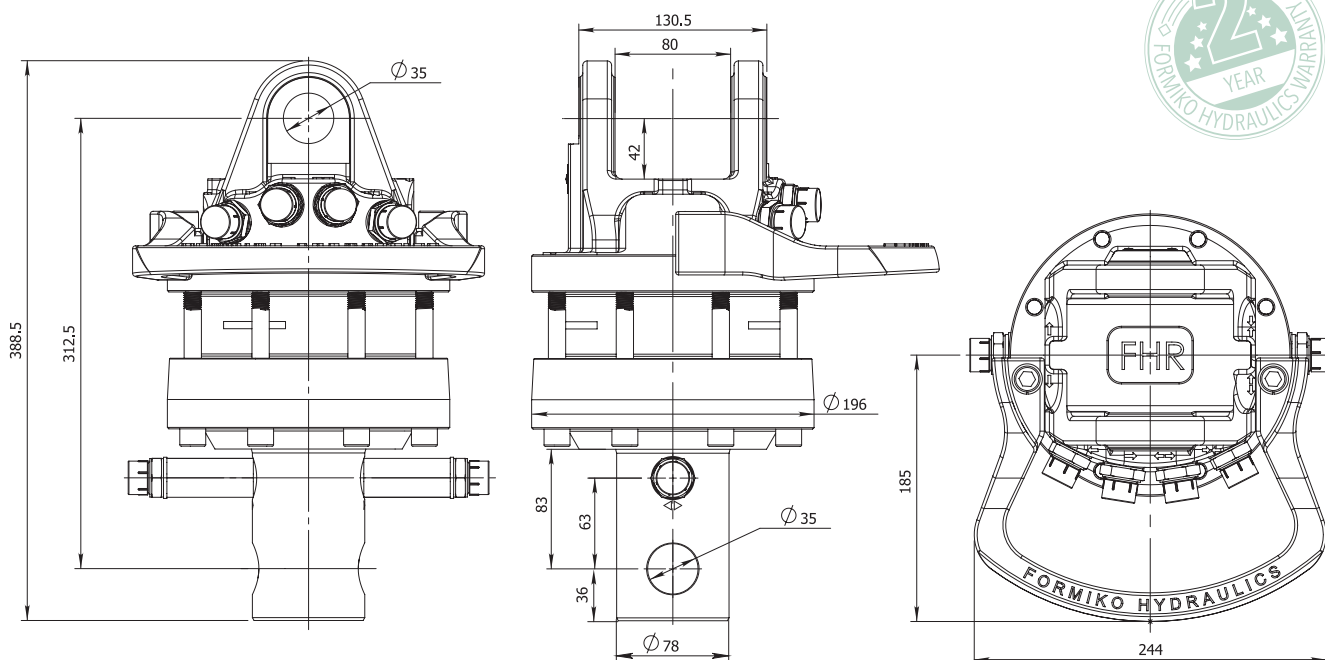
Rotator with
two bearings
to withstand
compression and
stretching forces

Rotator designed
for intensive
professional use
and extended
long lifetime

Grapple open
G1/2"

Grapple close
G1/2"

Reliable ø78 steel shaft
for fitting the grapple
with ø35 pin



FORESTRY



AGRICULTURE



CONSTRUCTION



GENERAL CARGO



RECYCLING

