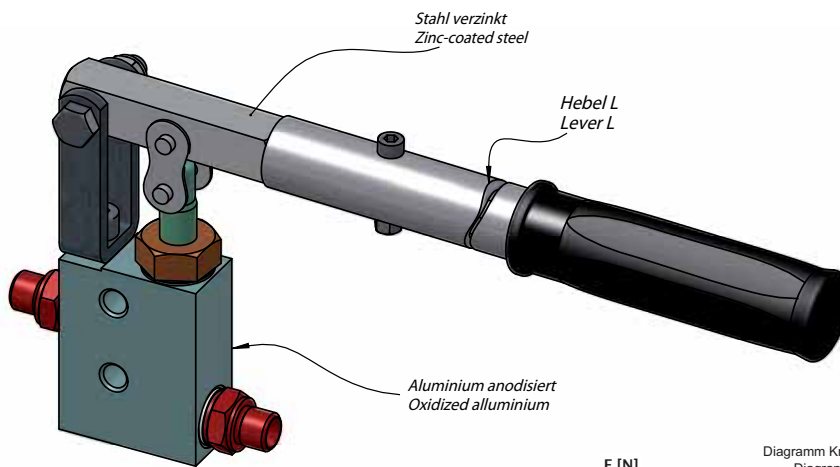
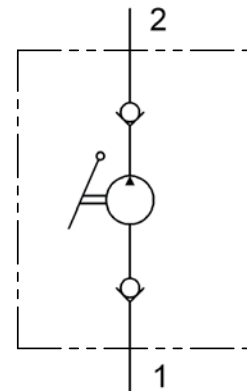
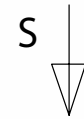
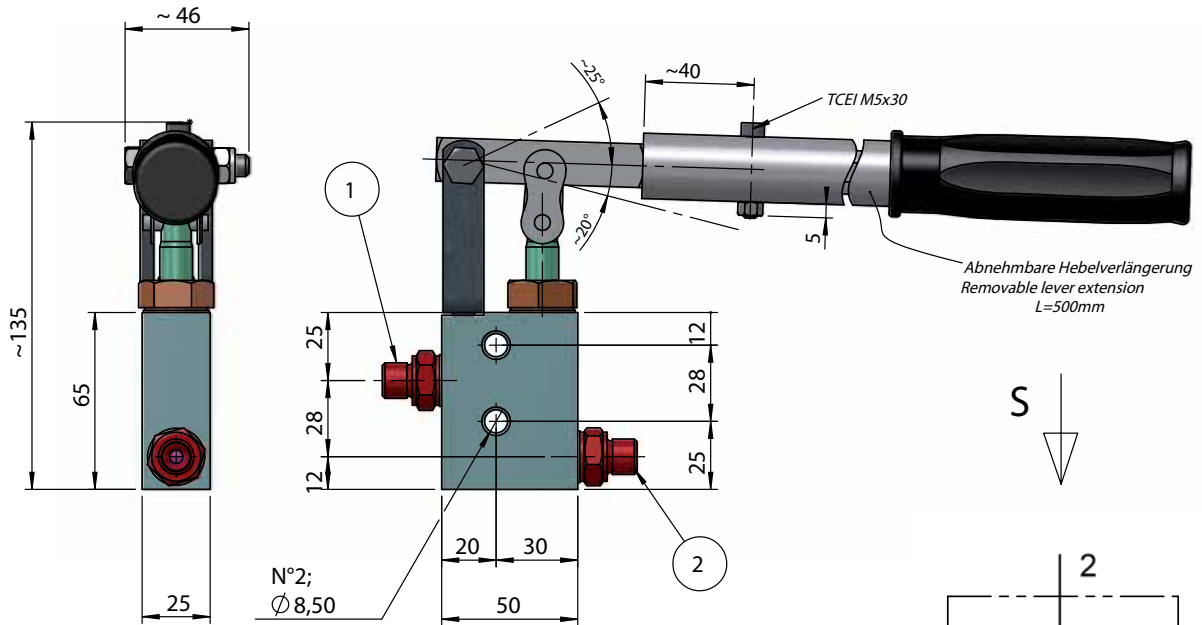


Pumpe Typ GL111M-750 - Pump Type GL111M-750

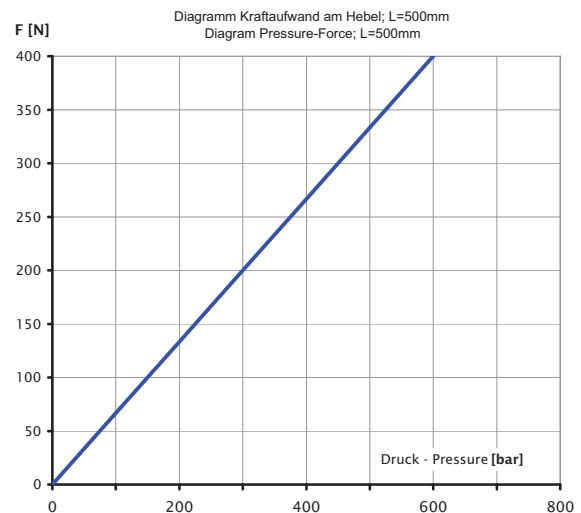
Einfach-Hubfunktion für einfachwirkende Zylinder
Single-acting function for single acting cylinder



Gewicht - Weight ~2 [kg]

- 1 Druckanschluss 1/4" Gas bspp - Pressure Port 1/4" Gas bspp
- 2 Sauganschluss 1/4" Gas bspp - Suction Port 1/4" Gas bspp

TYP TYPE	Fördervolumen Displacement [cm³]	Druck Pressure [bar]
GL111M-750	2,5	700



Unverbindliche Angaben. Änderungen vorbehalten. - Dimensions not binding. Modifications reserved without prior notice.
Property of HANSA-TMP SRL. Copying without authorisation will be persecuted by Law.
Eigentum von HANSA-TMP SRL. Nicht genehmigtes Kopieren wird strafrechtlich verfolgt.