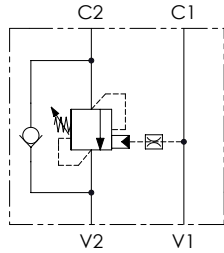




SCHEMA IDRAULICO / HYDRAULIC CIRCUIT

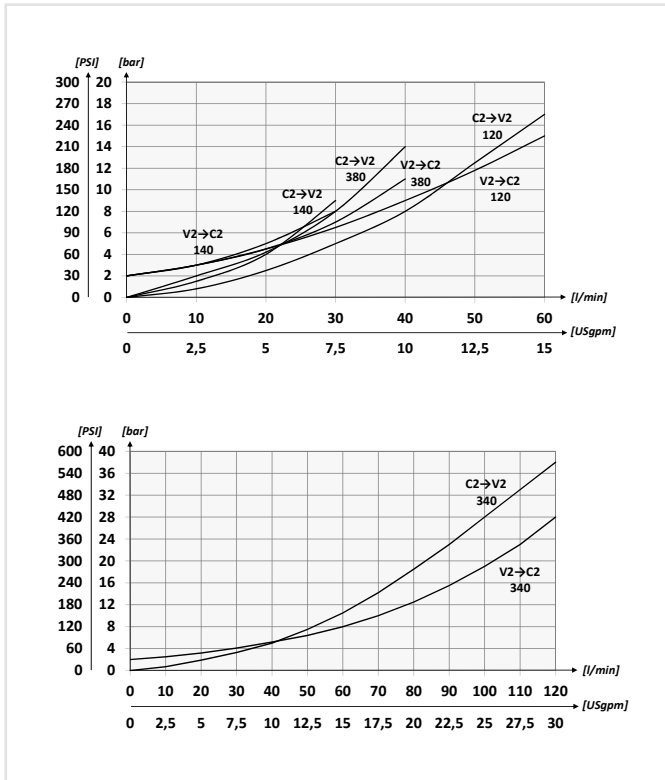


CODICE ORDINAZIONE
ORDERING CODE

01	02	03	04	05
VBCL				

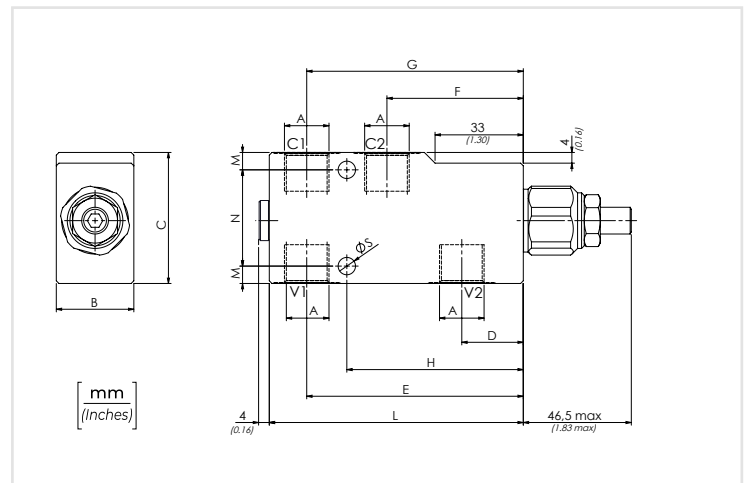
01	VALVOLE DI BILANCIAMENTO SINGOLE PER CENTRO APERTO (SINGLE COUNTERBALANCE VALVES FOR OPEN CENTER)				VBCL	
02	DIMENSIONE (SIZE)	BSPP 1/4			140	
		BSPP 3/8			380	
		BSPP 1/2			120	
		BSPP 3/4			340	
03	MOLLA (SPRING)	Rp 1:4.25	140	78 bar/al giro (1131 PSI/turn)	Taratura standard (Std. setting)	1
			380	160 bar/al giro (2320 PSI/turn)		
	Rp 1:8.75	120				
		Rp 1:4.25	140	135 bar/al giro (1958 PSI/turn)	Taratura standard (Std. setting)	
	380					
	Rp 1:8.75	120	160 bar/al giro (2320 PSI/turn)	Q=5 l/min 350 bar (5075 PSI)		
Rp 1:6.2		340	140	143 bar/al giro (2074 PSI/turn)	Taratura standard (Std. setting)	2
	120					
Rp 1:10.6	340	242 bar/al giro (3509 PSI/turn)	Q=5 l/min 350 bar (5075 PSI)			
	04	MATERIALE (MATERIAL)	Acciaio + zincatura (Steel body + zinc-plating)			S
			Acciaio + zinco-nichel (Steel body + zinc-nickel)			K
05	RAPPORTO DI PILOTAGGIO (PILOT RATIO)	140	1:4.25 Standard			/
		380	1:8.75			8
		120	1:6.2			/
		340	1:10,6			11

PERFORMANCES



DATI TECNICI / TECHNICAL DATA

Olio idraulico - Mineral oil **ISO 6743/4** (DIN 51524)
Viscosità olio - Oil viscosity **15-250 mm²/s** (15 to 250 cSt)
Classe di contaminazione max con filtro **ISO 4406:1999 Classe 19/17/14**
 Max contamination index with filter
Temperatura dell'olio - Oil temperature **-20°C +80°C** -4°F + 176°F
Temperatura ambiente - Environment temperature **-20°C +50°C** -4°F + 122°F
 È indispensabile l'utilizzo di un filtro per proteggere la valvola (filtrazione consigliata 15 µm)
 It is necessary a filter use to protect the valve (advised filtration 15 µm)



CARATTERISTICHE TECNICHE / TECHNICAL CHARACTERISTICS

TIPO TYPE	A	PORTATA MAX MAX FLOW l/min-USgpm	PRESSIONE MAX MAX PRESSURE bar-PSI	B	C	D	E	F	G	H	L	M	N	S	PESO APPROX (kg) APPROX WEIGHT (lb)		
VBCL140	BSPP 1/4	30 (7.9)	350 (5075)	29 (1.14)	49 (1.93)	23 (0.91)	81 (3.19)	51 (2.01)	81 (3.19)	66 (2.60)	95 (3.74)	6,5 (0.26)	36 (1.42)	6,5 (0.26)	0,98 (2.16)		
VBCL380	BSPP 3/8	40 (10.6)			59 (2.32)	21 (0.83)	84 (3.30)		84 (3.31)	67,5 (2.66)	100 (3.94)	9,5 (0.37)	40 (1.57)		0,92 (2.02)		
VBCL120	BSPP 1/2	60 (15.9)			39 (1.54)	69 (2.72)	20 (0.79)		120 (4.72)	72 (2.83)	120 (4.72)	96 (3.78)	140 (5.51)		50 (1.97)	10,5 (0.41)	1,09 (2.40)
VBCL340	BSPP 3/4	120 (31.7)			39 (1.54)	69 (2.72)	20 (0.79)		120 (4.72)	72 (2.83)	120 (4.72)	96 (3.78)	140 (5.51)		50 (1.97)	10,5 (0.41)	2,54 (5.59)