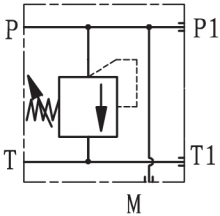


# PMWE6

## PUMP SIDE INLET ELEMENTS WITH PRIMARY PRESSURE RELIEF VALVE PMWE6

### SYMBOL



### Technical data

Operating pressure(MPa)	31.5
Max flow rate (L/min)	50

Port	Threaded connection	
P,T	Inch	G3/8,G1/2
	American	SAE8(3/4"16 UNF)
M	Inch	G1/4
	American	SAE4(7/16"20 UNF)

### External Dimensions and Fittings

