

OIT



SÉRIE **HPB - 315 BAR** SERIES

Filtro Alta Pressão
High pressure filters

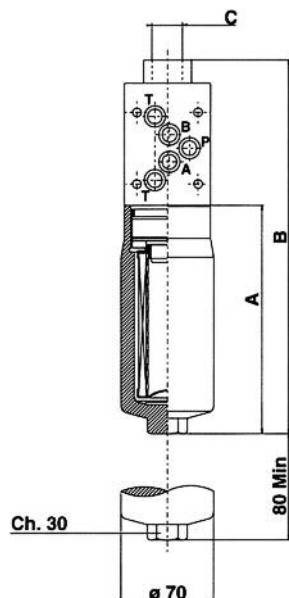
De forma a melhorarmos constantemente a qualidade dos nossos produtos, temos o direito a modificar os catálogos sem notificações.

Os clientes tem a responsabilidade de continuamente verificar a informação dos catálogos. Este catálogo cancela os anteriores.

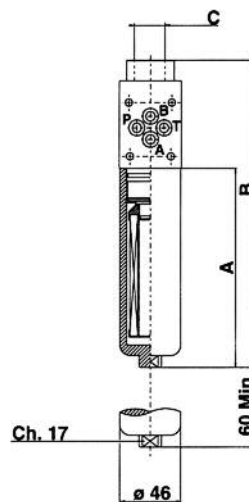
In order to constantly improve our products quality, we take the right to make changes to the catalogues at any time without notice.

Customers have the responsibility to continuously check all the information in the catalogues. This catalogue cancels and replaces the previous ones.

CABEÇA COM CONEXÃO CETOP 05 HEAD WITH CONNECTION CETOP 05

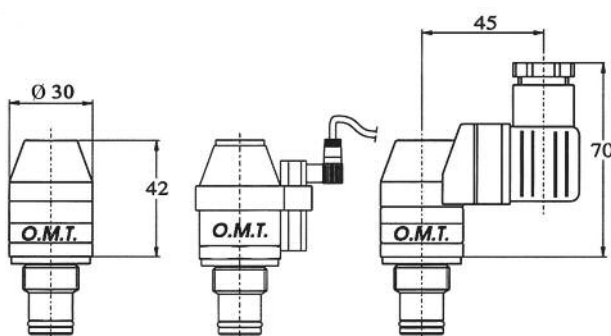


CABEÇA COM CONEXÃO CETOP 03 HEAD WITH CONNECTION CETOP 03



Código Code	Conexão Connection	A	B	C
HPB 061	CETOP 03	150	231,5	M20 x 1.5 1/2" BSP
HPB 282	CETOP 05	172	281,5	
HPB 283	CETOP 05	272	381,5	

DIFERENCIAL INDICADORES / DIFFERENTIAL INDICATORS



DV500M/DV500
Indicador
Elétrico Visual
Electrical visual
indicator

DR500M / DR500
Indicador visual
com contactos
"Reed"
Visual indicator
with "Reed" contacts

DE500M / DE500
Indicador Visual
Visual indicator

Mudança dos contactos com os seguintes valores

Exchange contacts with the following values:

Voltagem Voltage supply (V)	Carregamento Resistive charge (A)	Carga Inductive charge (A)
C.A. 125	5	5
C.A. 250	5	5
C.C. 15	10	10
C.C. 30	5	5
C.C. 50	1	1
C.C. 125	0.5	0.06

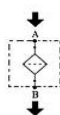
Indicadores visuais estão disponíveis:

- Com roscas M20x1.5 (DV...M) e roscas 1/2" BSP (DV...)
- com contactos "Reed" (DR500M e DR500)

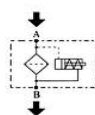
Available visual indicator:

- with threads M20x1.5 (DV...M) and threads 1/2" BSP (DV...)
- with "Reed" contacts (DR500M and DR500)

SIMBOLOGIA / SIMBOLS

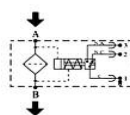


HP



n

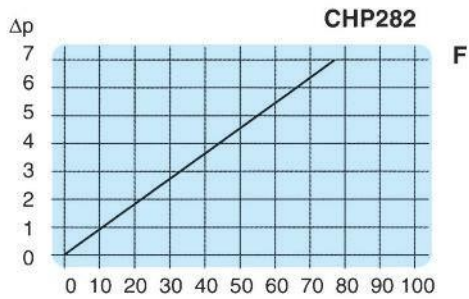
DV50



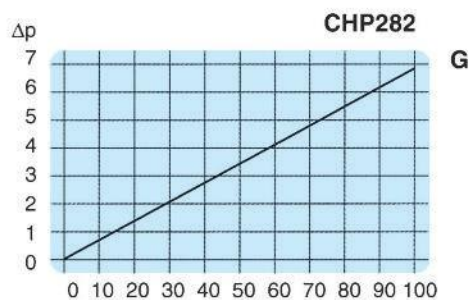
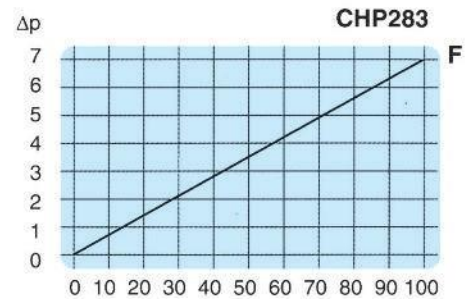
n

DE50

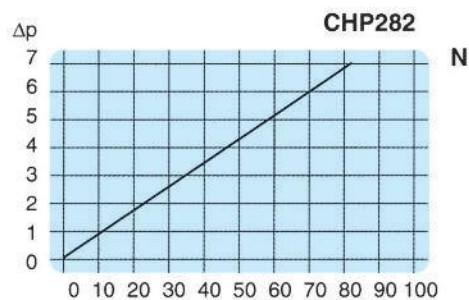
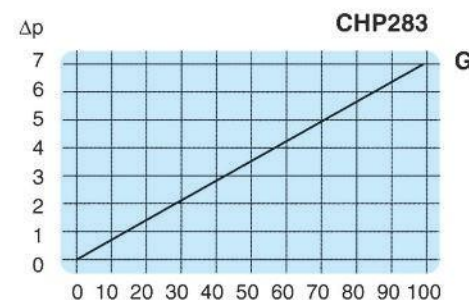
ELEMENTO FILTRÁVEL QUEDA DE PRESSÃO (baixa pressão diferencial) e Y (alta pressão diferencial)
FILTER ELEMENT PRESSURE DROP (low differential pressure and high differential pressure)



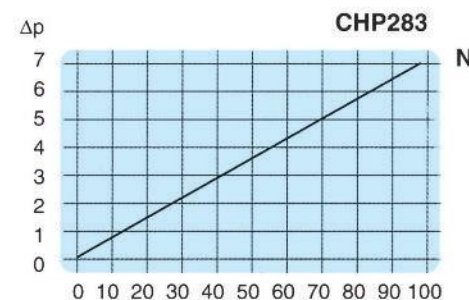
Portata (l/min)
 Flow rate



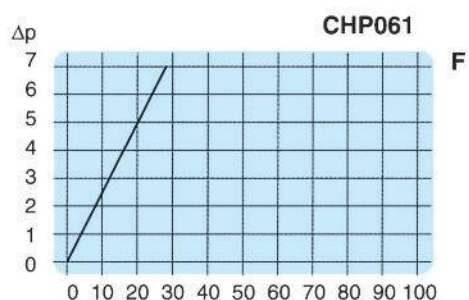
Portata (l/min)
 Flow rate



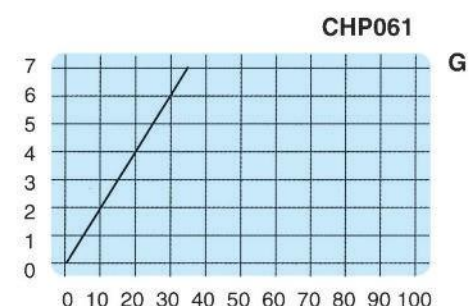
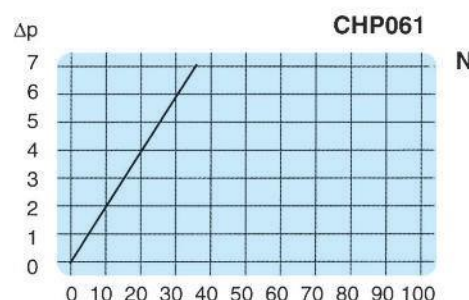
Portata (l/min)
 Flow rate



ELEMENTO FILTRÁVEL QUEDA DE PRESSÃO (alta pressão diferenciável)
FILTER ELEMENT PRESSURE DROP (high differential pressure)



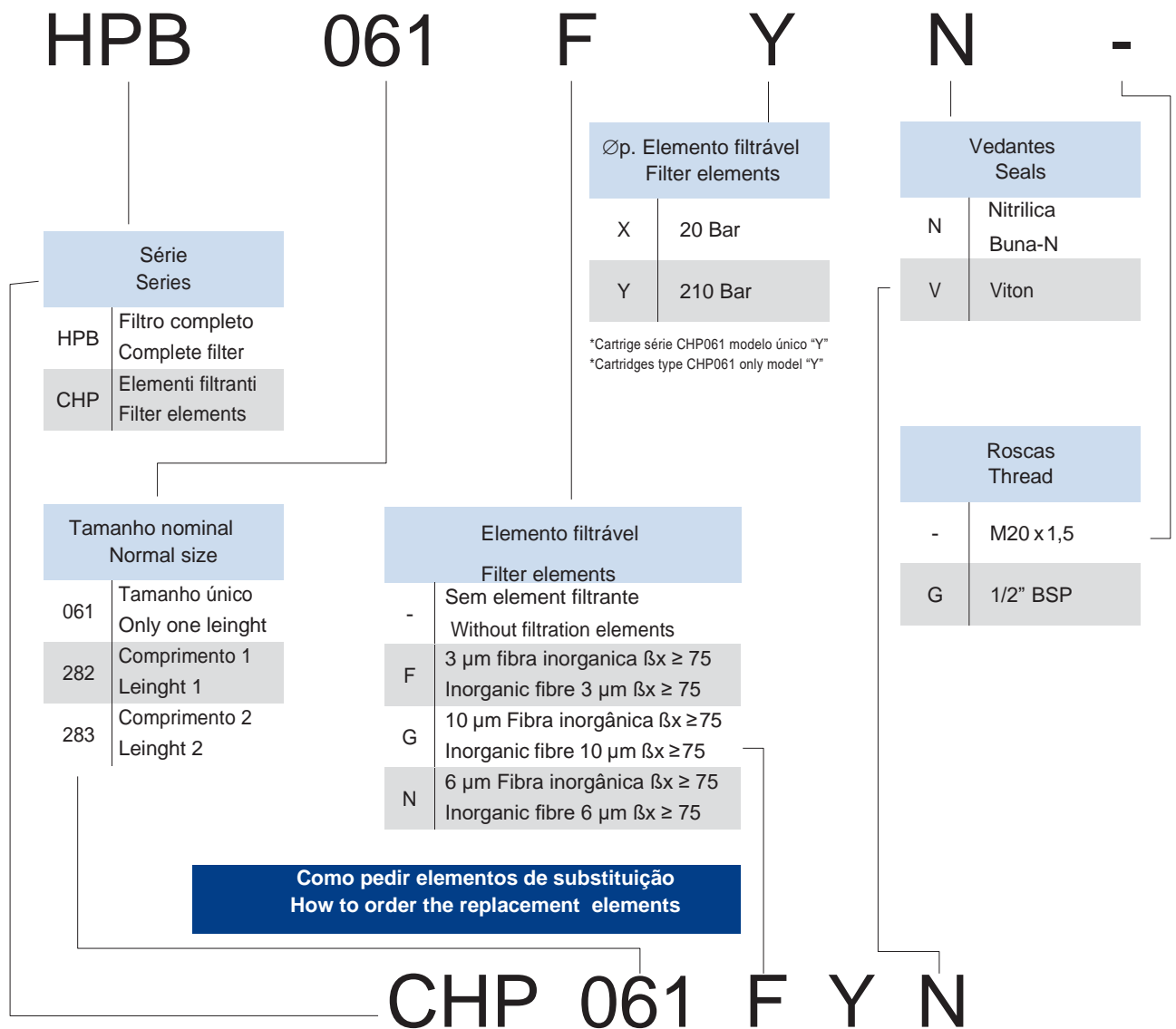
Portata (l/min)
 Flow rate



Portata (l/min)
 Flow rate

A curva do gráfico refere ao óleo mineral com viscosidade de 30 cS. A variação da queda de pressão é proporcional à viscosidade.

The graphic refer to mineral oil with a kinematic viscosity of 30 cS. The variation of the pressure drop is proportional to viscosity.



DESCRIÇÃO

Filtro de Alta Pressão

INFORMAÇÃO TÉCNICA

- Cabeça do filtro em ferro esférico
- Conteúdo Aço
- Máxima pressão de trabalho 315 bar
- Pressão de fadiga 0 a 300 bar e 1.000.000 de ciclo
- Pressão de Teste 450 bar
- Pressão de Colapso 900 bar
- Pressão de Trabalho -20 +95 °C

ELEMENTOS FILTRÁVEIS

- **ISO 4572** - Oleohidráulica- Filtro – Determinação da Filtração
- **ISO 2942** - Oleohidráulica – Elemento Filtrável – Verifica o fabrico
- **ISO 2943** Oleohidráulica – Elemento Filtrável – Verifica a compatibilidade com fluidos (tipo HH - HM - HR - HV - HG secondo ISO 6743/4)
- **ISO 3723** - Oleohidráulica – Elementos Filtrável - Verifica a resistência
- **ISO 3724** - Oleohidráulica – Elemento filtrável - Verifica a resistência e a fadiga.
- **ISO 2941** Oleohidráulica – Elemento filtrável – Verifica a resistência do colapso.
- **ISO 3968 Cl.B.** - Oleohidráulica- Filtro – Determinação da queda de pressão vs. as características de fluxo.

DESCRIPTION

High pressure filters

TECHNICAL DATA

- Filter head melts in cast spheroidal iron
- Steel housing
- Max working pressure 315 bar
- Fatigue pressure of 1.000.000 cycles at 0-300 bar
- Static pressure testing at 450 bar
- Collapse pressure 900 bar
- Operating temperature -20 +95 °C

FILTRATION ELEMENTS

- **ISO 4572** - Hydraulic fluid power - Filters - Multi-pass method for evaluating filtration performance
- **ISO 2942** - Hydraulic fluid power - Filters elements - Verification of fabrication integrity and determination of first bubble point
- **ISO 2943** - Hydraulic fluid power - Filters elements - Verification of material compatibility with fluids (HH - HM - HR - HV - HG type according ISO6743/4)
- **ISO 3723** - Hydraulic fluid power - Filters elements - Method for end load test
- **ISO 3724** - Hydraulic fluid power - Filters elements - Verification of flow fatigue characteristics
- **ISO 2941** - Hydraulic fluid power - Filters elements - Verification of collapse/burst resistance
- **ISO 3968 Cl.B.** - Hydraulic fluid power - Filters - Evaluation of pressure drop versus flow characteristics

A series of 28 horizontal light blue lines intended for writing notes.

REC. CALOR
HEAT EXCHANGERS

FILTROS
FILTERS

ACESSÓRIOS
ACCESSORIES

COMPONENTES
COMPONENTS

FLANGE / FLANGES
RACORES/COUPLINGS
BUCHAS / MANIFOLDS

