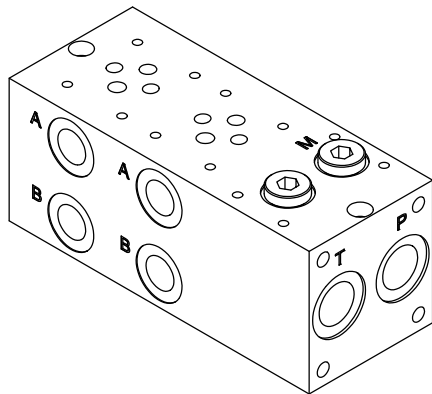
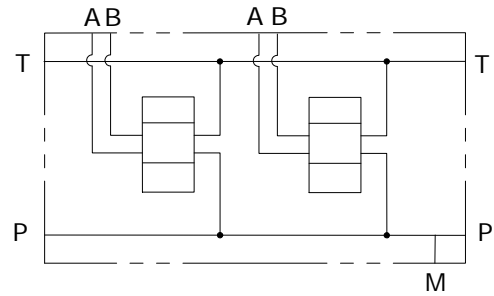


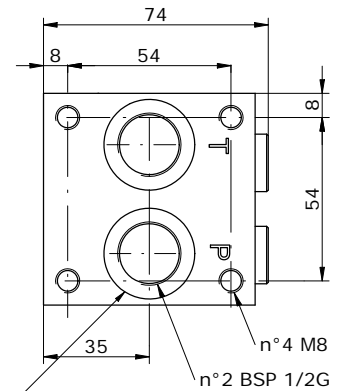
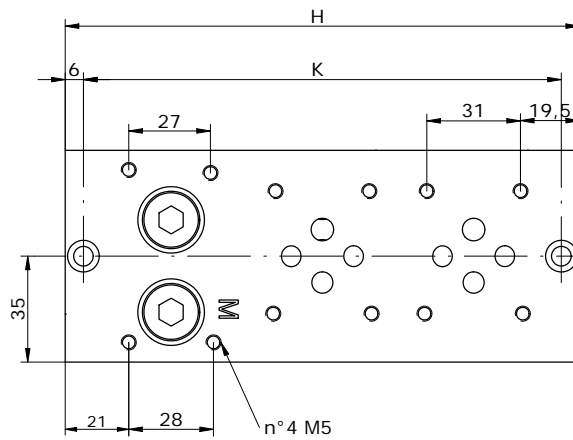
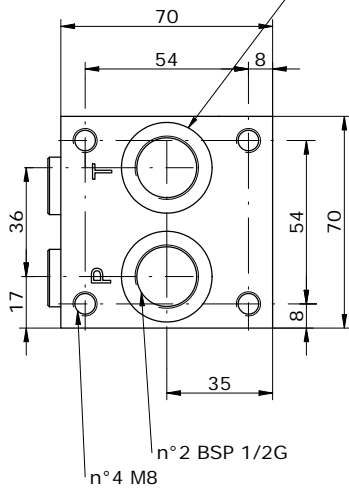
MONOBLOCCO CETOP 3 CON UTILIZZI A-B LAT 3/8" BSP . P-T POST 1/2" BSP CON VALVOLA ELETTRICA OPZIONALE
MONOBLOCK CETOP 3 WITH A-B PORTS ON SIDE 3/8" BSP, P-T REAR 1/2" BSP WITH OPTIONAL VENTING VALVE



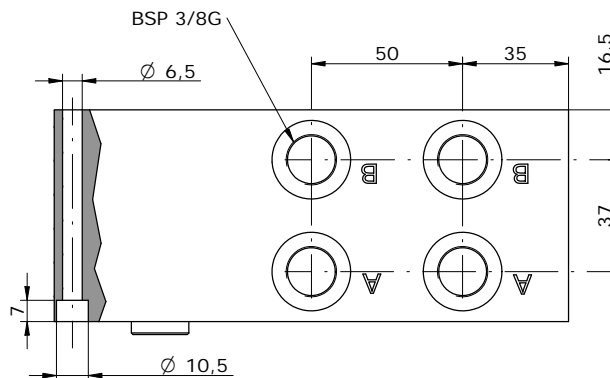
Schema idraulico
Hydraulic diagram



INTERFACCIA AUSILIARE SU ELEMENTI AGGIUNTIVI (USARE OR2106)
INTERFACE FOR ADDITIONAL AUXILIARY ELEMENTS (USE OR2106)



INTERFACCIA AUSILIARE SU ELEMENTI AGGIUNTIVI (USARE OR2106)
INTERFACE FOR ADDITIONAL AUXILIARY ELEMENTS (USE OR2106)



E_06 - 21 - 38 - ___ - 0

ACCESSORI DISPONIBILI / AVAILABLE ACCESSORIES:

E_06-17-12 ELEMENTO PER VENTING O VALVOLA DI MASSIMA / VENTING OR RELIEF VALVE ELEMENT (p. 14.1)

E_06-24-__ ELEMENTO AGGIUNTIVO VENTING / VENTING ELEMENT (p. 14.2)

VEDI ASSIEMI / SEE ASSEMBLY

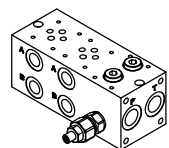
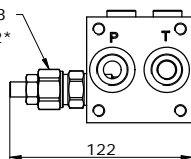
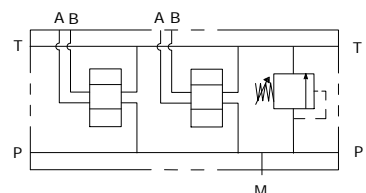
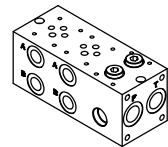
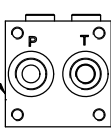
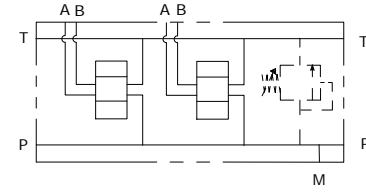
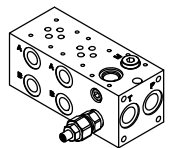
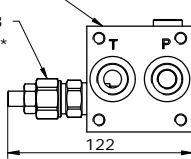
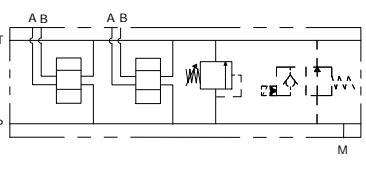
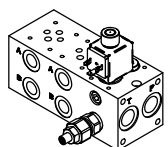
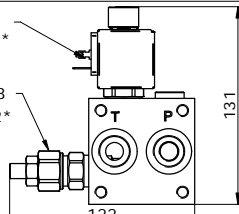
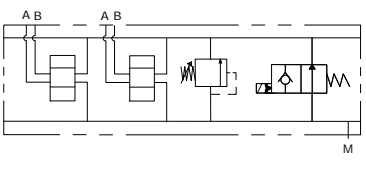
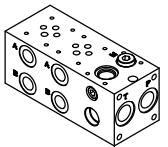
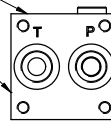
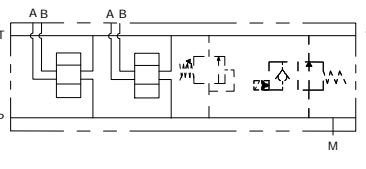
POS.	01	02	03	04	05	06	07	08	09	10
H	120	170	220	270	320	370	420	470	520	570
K	108	158	208	258	308	358	408	458	508	558

Via Nicolò Copernico 12/c-d
29027 Casoli Di Gariga - Podenzano (PC) Italy

www.oleodinamica2mp.it
Tel +39 0523 523231
Fax +39 0523 524509

MONOBLOCCO CETOP 3 CON UTILIZZI A-B LAT 3/8" BSP . P-T POST 1/2" BSP CON VALVOLA ELETTRICA OPZIONALE
MONOBLOCK CETOP 3 WITH A-B PORTS ON SIDE 3/8" BSP, P-T BACK 1/2" BSP WITH OPTIONAL VENTING VALVE



<p>E_06 - 21 - 38 - ___ - 1</p> 	<p>CAVITY C008 DRV-M20-02*</p>  <p>122</p>	
<p>E_06 - 21 - 38 - ___ - 2</p> 	<p>CAVITY C008</p> 	
<p>E_06 - 21 - 38 - ___ - 4</p> 	<p>CAVITY C007 CAVITY C008 DRV-M20-02*</p>  <p>122</p>	
<p>E_06 - 21 - 38 - ___ - 5</p> 	<p>CAVITY C007 SVCP-S08-TS2* CAVITY C008 DRV-M20-02*</p>  <p>122</p> <p>131</p>	
<p>E_06 - 21 - 38 - ___ - 6</p> 	<p>CAVITY C007 CAVITY C008</p> 	

E_06 - 21 - 38 - _____

MOUNTING POSITIONS: 01 ÷ 10

S = STEEL
A = ALUMINIUM

0 = WITHOUT RELIEF VALVE
1 = WITH RELIEF VALVE
2 = RELIEF VALVE READY
4 = WITH R.V. AND V.V. READY
5 = WITH R.V. AND V.V.
6 = V.V. READY AND R.V. READY

0 = WITHOUT R.V.
1 = 5-55 bar
2 = 25-110 bar
3 = 50-215 bar
4 = 100-350 bar
5 = 100-420 bar

H = HEX. HEAD SCREW **K = KNOB** **C = COVER CAP** **I = NOT ADJUSTABLE**

SEALS
N = BUNA
V = VITON

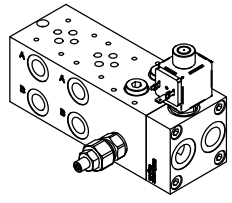
VENTING VALVE
000 = WITHOUT V.V.
TS2 = NORMALLY OPEN

CONNECTOR TYPE
0 = WITHOUT COIL
C = CAVI / LEADS
D = DIN 43650
G = DEUTSCH DT04-2P
A = AMP JUNIOR

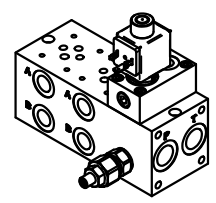
TENSIONE / VOLTAGE
000 = WITHOUT COIL
D12 = 12 VDC
D24 = 24 VDC
220 = 220 RAC

VENTING VALVE
0 = NO MANUAL OVERRIDE
3 = PUSH PIN
4 = PUSH BOTTON
5 = HEX. ALLEN

MONTAGGIO CON ACCESSORI / ASSEMBLY WITH ACCESSORIES:



E_06-17-12 (p. 14.1)



E_06-24-__ (p. 14.2)

* see **CARTRIDGE VALVES** datasheets

Via Nicolò Copernico 12/c-d
 29027 Casoli Di Gariga - Podenzano (PC) Italy

www.oleodinamica2mp.it
 Tel +39 0523 523231
 Fax +39 0523 524509