

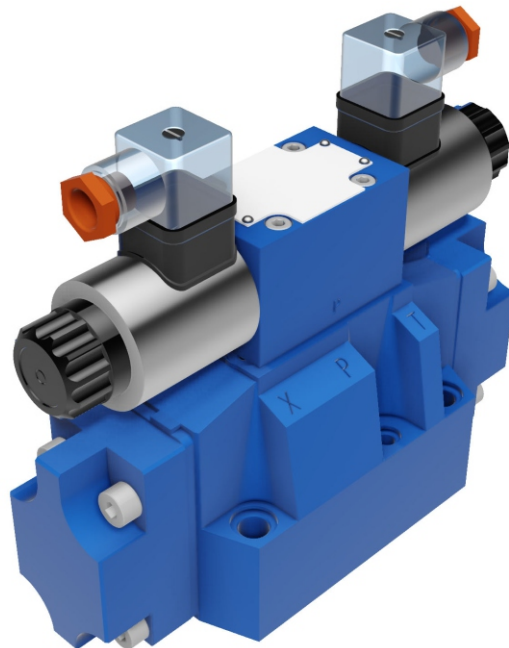


**DISTRIBUTORI
OLEODINAMICI**

WEH

**SOLENOID PILOT OPERATED
DIRECTIONAL CONTROL VALVES**

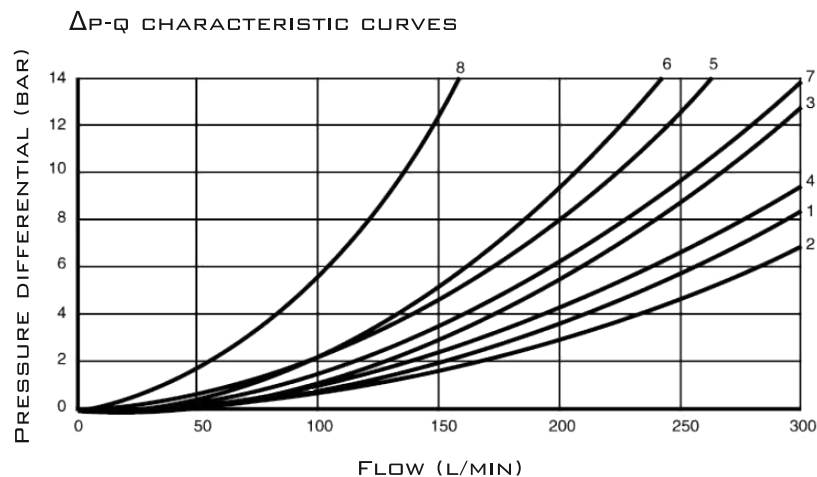
WEH SERIES ARE SOLENOID PILOT OPERATED
SPOOL TYPE VALVES.
THIS SERIES ARE USED TO CONTROL THE
START, STOP AND DIRECTION OF FLOW.



TECHNICAL DATA

SIZE		16	25	32
MAX. FLOW RATE (L/MIN)		300	650	1100
OPERATING PRESSURE (MPA)	A, B, P PORTS	35		
	T PORT	16		
MIN. PILOT PRESSURE (MPA)		0.45 – 1.3	0.45 – 1	0.45 – 1
WEIGHT (KG)		9.5	18	38.5
VALVE BODY (MATERIAL)		CASTING PHOSPHATING SURFACE		

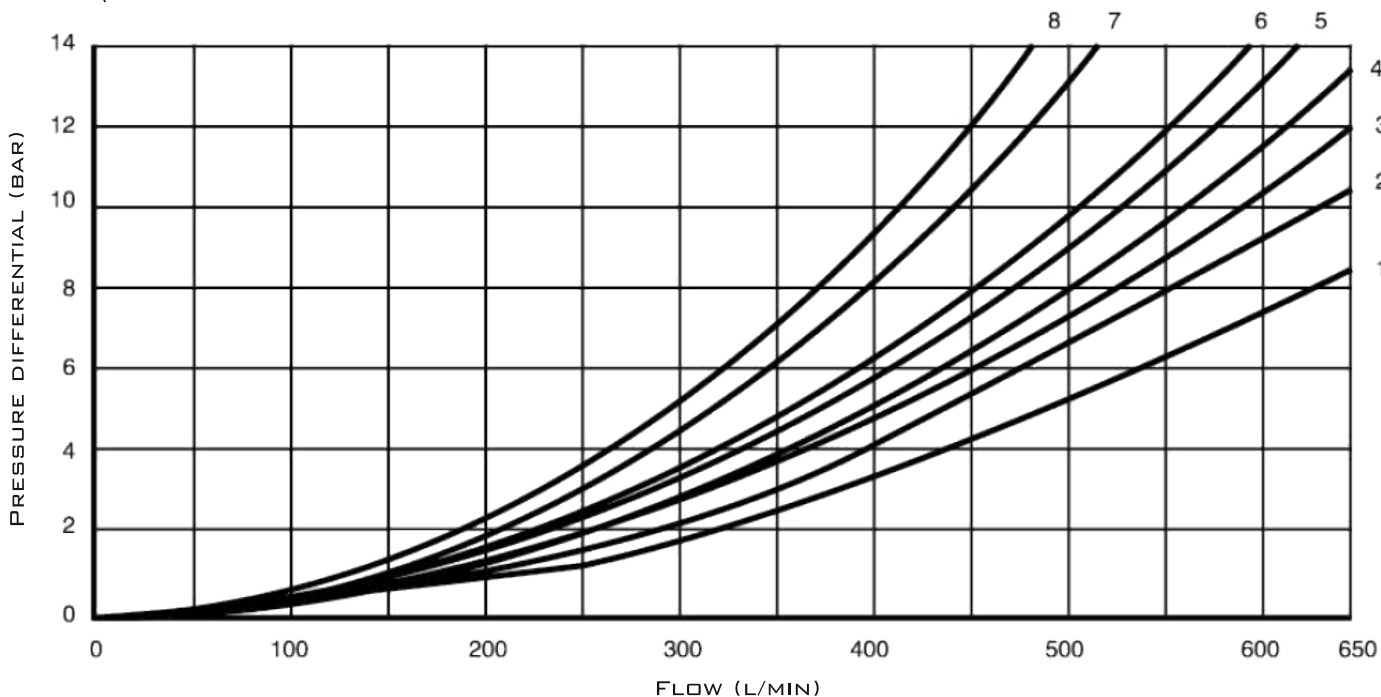
CHARACTERISTIC CURVES 4WEH16...



SPOOL SYMBOL	FLOW DIRECTION				
	P - A	P - B	A - T	B - T	P - T
E, D, Y	1	1	1	3	-
F	2	2	3	2	-
G, T	5	1	3	7	6
H, C, Q, V, Z	2	2	3	3	-
J, K, L	1	1	3	3	-
M, W	2	2	4	3	-
R	2	2	4	-	-
U	1	1	4	7	-
S	4	4	4	-	8

CHARACTERISTIC CURVES 4WEH25...

$\Delta P-Q$ CHARACTERISTIC CURVES

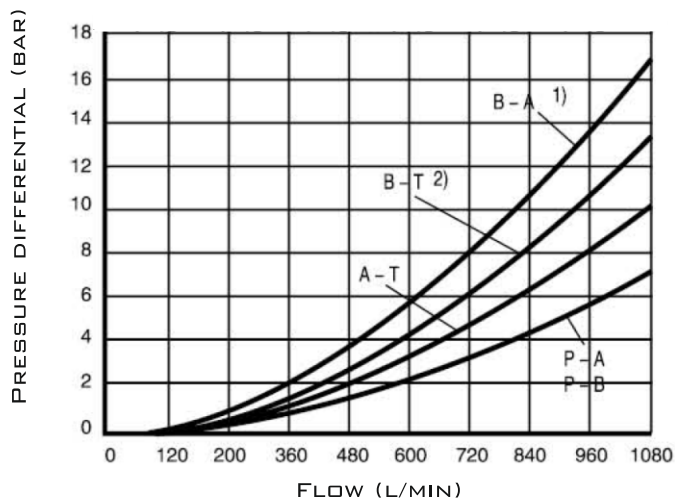


7 CURVE - SPOOL SYMBOL "G" IN CENTRAL POSITION P → T;
8 CURVE - SPOOL SYMBOL "T" IN CENTRAL POSITION P → T.

SPOOL SYMBOL	FLOW DIRECTION			
	P - A	P - B	A - T	B - T
E	1	1	1	3
F	1	4	3	3
G	3	1	2	4
H	4	4	3	4
J, Q	2	2	3	5
L	2	2	3	3
M	4	4	1	4
P	4	1	1	5
R	2	1	1	-
T	3	1	2	4
U	4	1	1	6
V	2	4	3	6
W	1	1	1	3

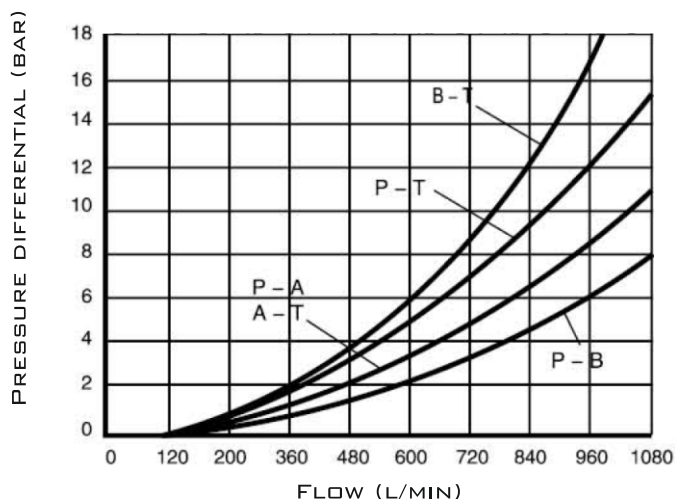
CHARACTERISTIC CURVES 4WEH32...

$\Delta P-Q$ CHARACTERISTIC CURVES - SPOOL TYPE "E", "R", "W"

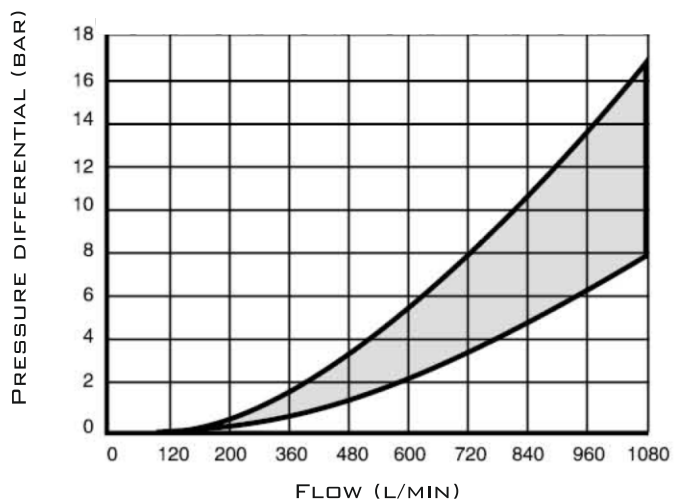


1) ONLY APPLICABLE FOR SPOOL TYPE "R"
2) NOT APPLICABLE FOR SPOOL TYPE "R"

$\Delta P-Q$ CHARACTERISTIC CURVES - SPOOL TYPE "G", "T"



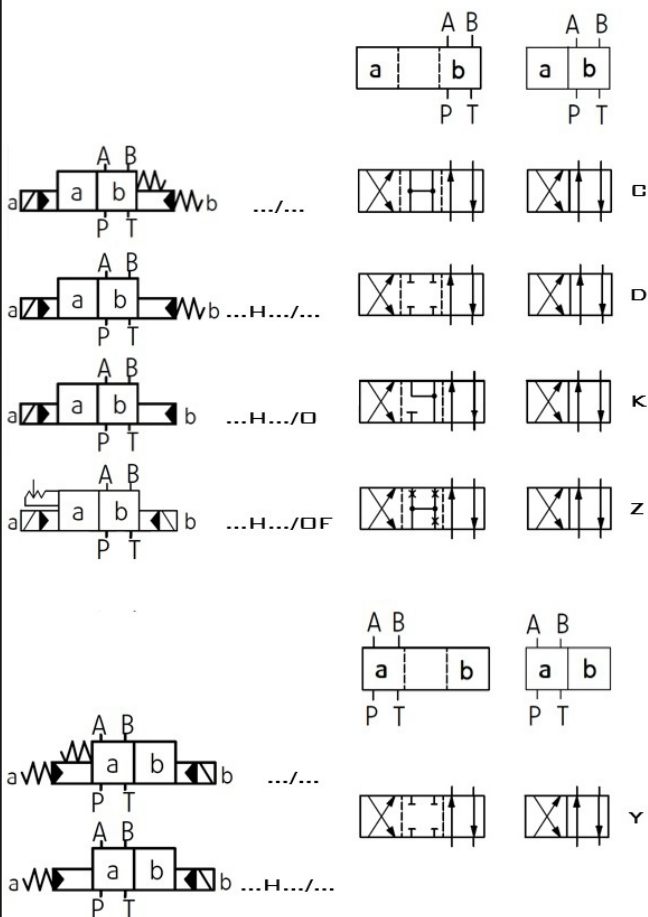
$\Delta P-Q$ CHARACTERISTIC CURVES - ALL SPOOL TYPES



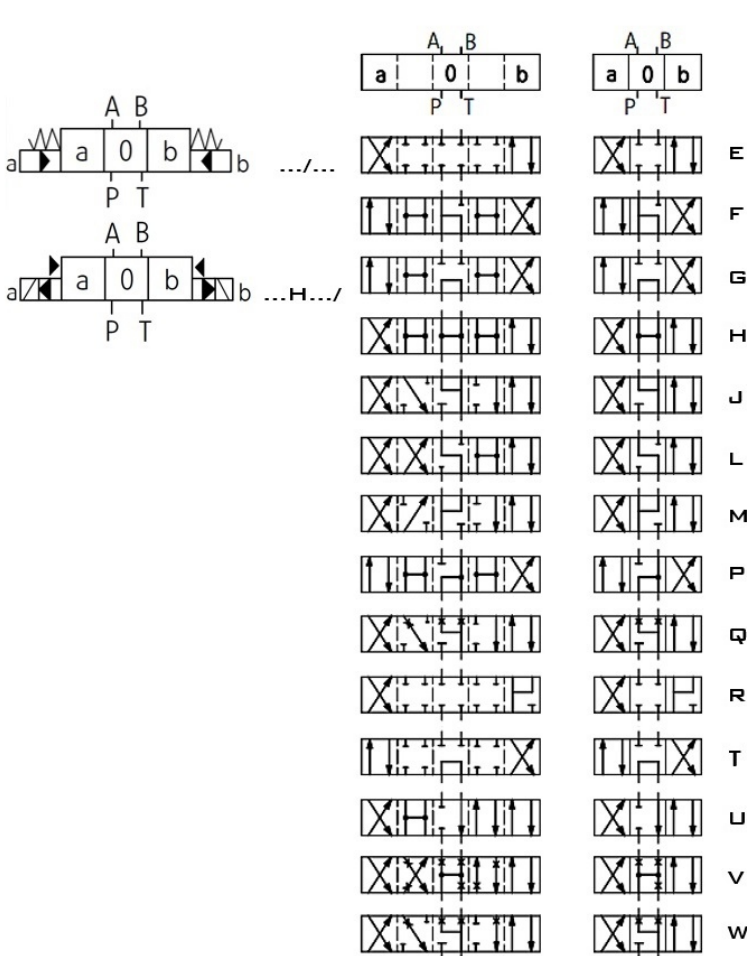


SPOOL SYMBOLS

2-POSITION VALVES

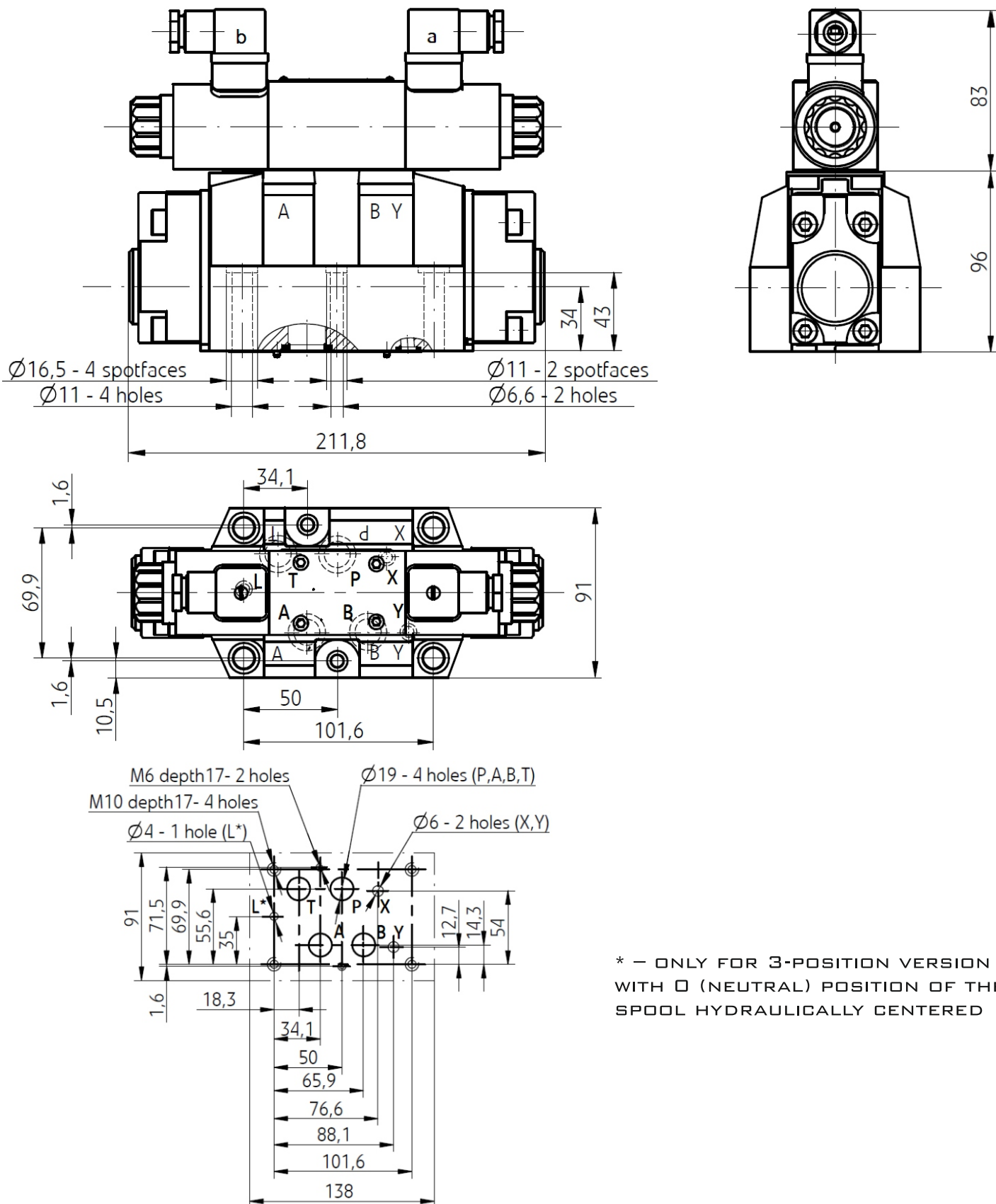


3-POSITION VALVES



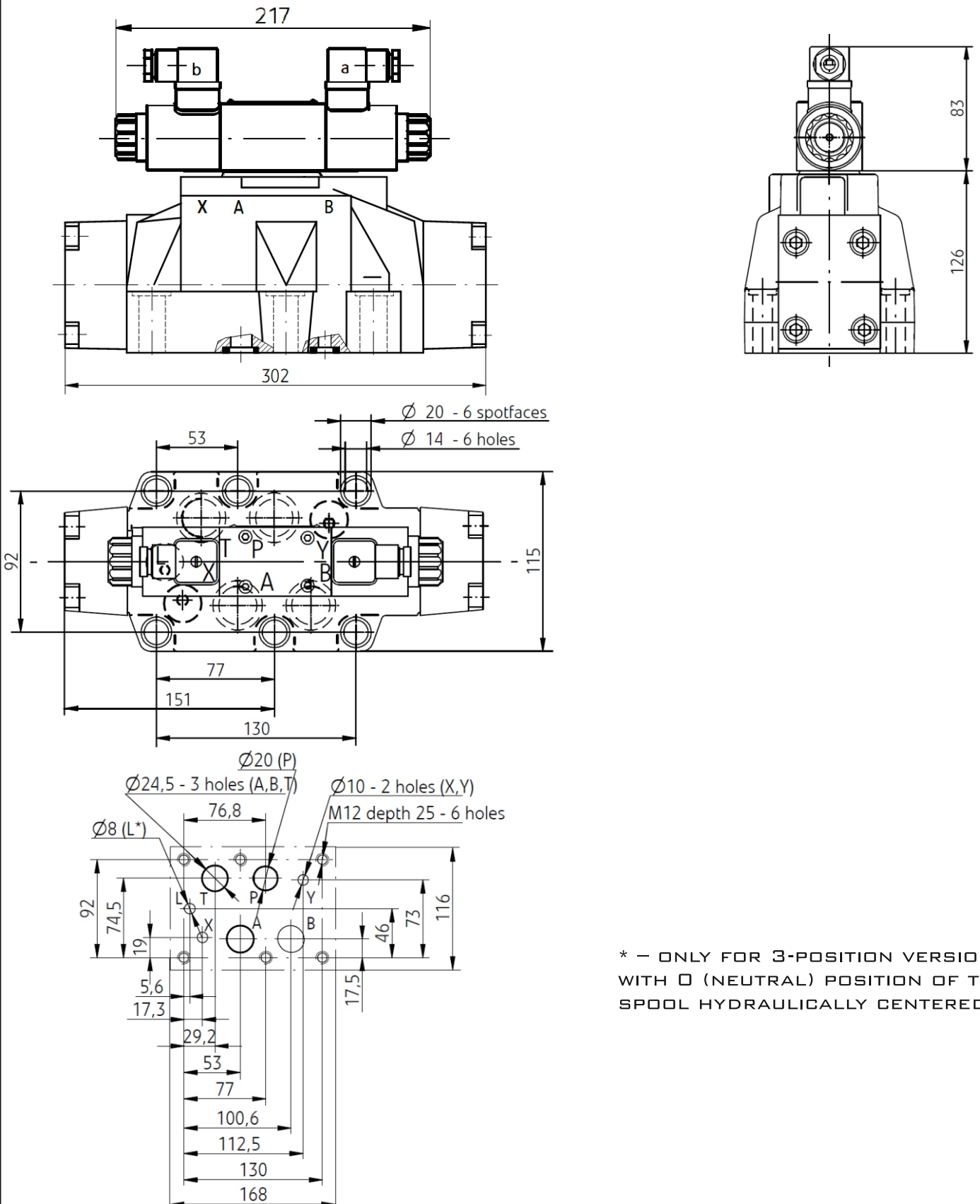
SEE ALSO:
WE6, WE10

SUBPLATE INSTALLATION DIMENSIONS 4WEH16...

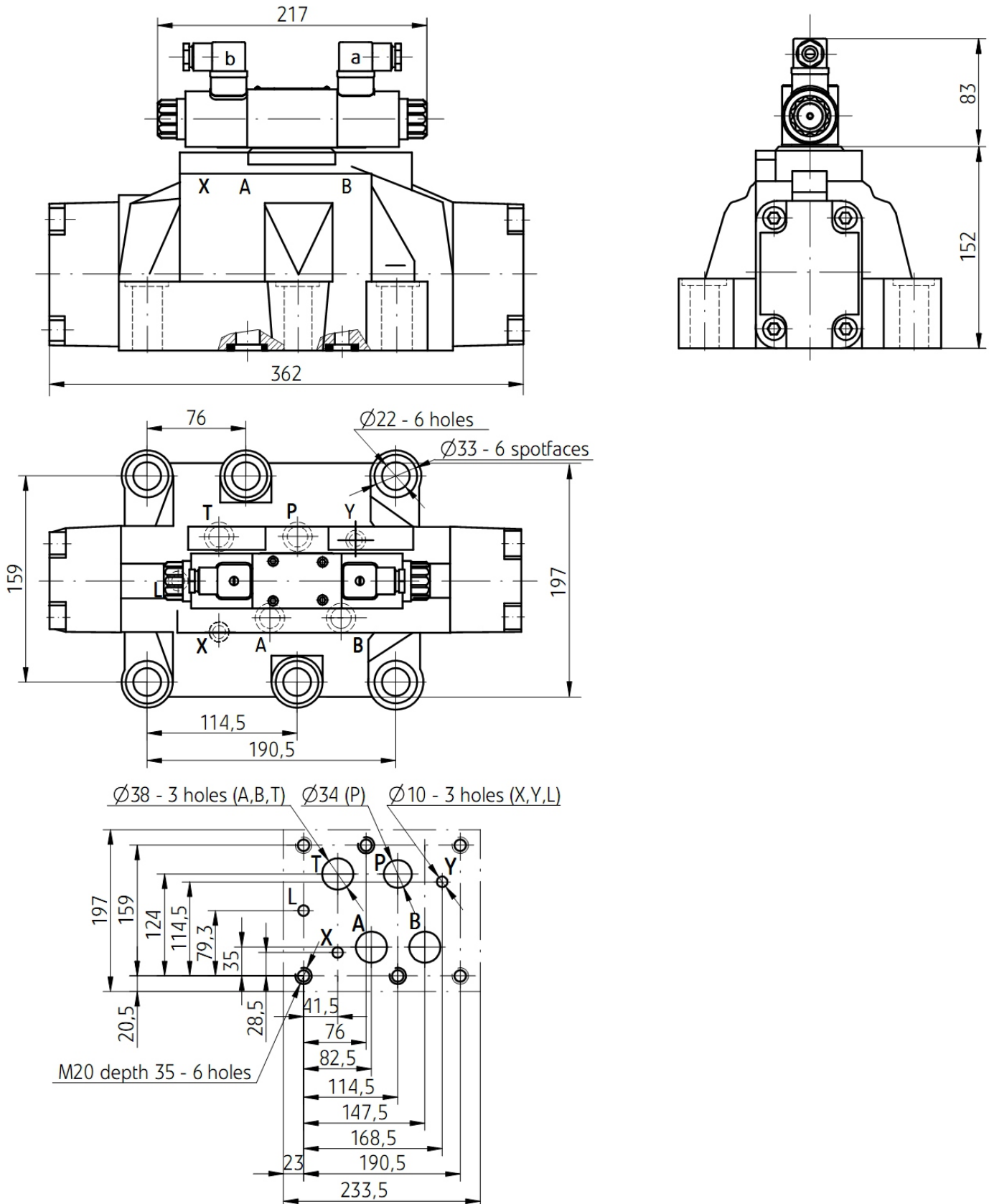


* - ONLY FOR 3-POSITION VERSION
WITH O (NEUTRAL) POSITION OF THE
SPOOL HYDRAULICALLY CENTERED

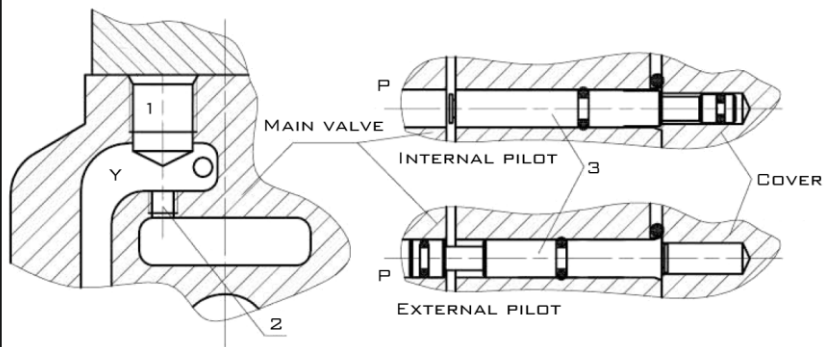
SUBPLATE INSTALLATION DIMENSIONS 4WEH25...



SUBPLATE INSTALLATION DIMENSIONS 4WEH32...



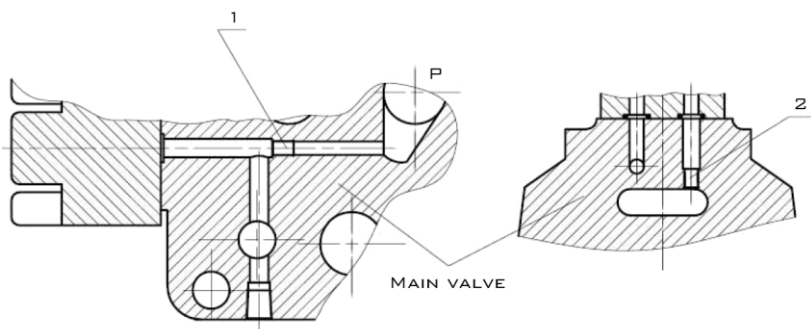
PILOT FLUID SUPPLY



4WEH16

1. INTERNAL PILOT AND EXTERNAL PILOT:
REMOVING THE SIDEWARD COVER, INSTALLING THE PIN TO ALLOW "P" PORT WITH OPEN POSITION IS INTERNAL PILOT, TO CONVERT THE PIN INTO "P" PORT WITH PLUGGED POSITION IS EXTERNAL PILOT.

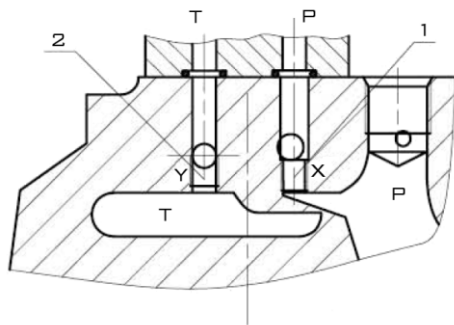
2. INTERNAL DRAIN AND EXTERNAL DRAIN:
REMOVING THE BOLT (1) AND INSTALLING M6 SCREW 2 IS EXTERNAL DRAIN, UNSCREW THE M6 SCREW (2) IS INTERNAL DRAIN.



4WEH25

1. INTERNAL PILOT AND EXTERNAL PILOT:
REMOVING THE SIDEWARD COVER, INSTALLING M6 SCREW (1) IS EXTERNAL PILOT, UNSCREW THE M6 SCREW (2) IS INTERNAL PILOT.

2. INTERNAL DRAIN AND EXTERNAL DRAIN:
REMOVING THE M6 SCREW (2) IN THE "T" PORT ON THE TOP OF MAIN VALVE IS INTERNAL DRAIN, INSTALLING THE M6 SCREW (2) IS EXTERNAL DRAIN.



4WEH32

1. INTERNAL PILOT AND EXTERNAL PILOT:
INSTALLING THE M6 SCREW (1) IN THE "P" PORT ON THE TOP OF MAIN VALVE IS EXTERNAL PILOT, REMOVING THE M6 SCREW (2) IS INTERNAL PILOT.

2. INTERNAL DRAIN AND EXTERNAL DRAIN:
REMOVING THE M6 SCREW (2) IN THE "T" PORT ON THE TOP OF MAIN VALVE IS EXTERNAL DRAIN, INSTALLING THE M6 SCREW (2) IS INTERNAL DRAIN.

NOTE:

THE "X" PORT ON THE BASE PLATE MUST BE PLUGGED IF INTERNAL PILOT.
THE "Y" PORT ON THE BASE PLATE MUST BE PLUGGED IF INTERNAL DRAIN.

