



INDICATORI DI PRESSIONE

MGE.F

PRESSURE GAUGES
STAINLESS STEEL CASE (GLYCERINE)
FLANGED

PRESSURE GAUGES SUITABLE FOR ALL
PROCESS GASEOUS AND LIQUID THAT
DON'T ATTACK COPPER ALLOY PARTS.
INTENDED FOR ADVERSE SERVICE
CONDITIONS WHERE PULSATING OR
VIBRATION EXIST SERVICE CONDITIONS
WHERE PULSATING OR VIBRATION EXISTS.
MADE ACCORDING UNI EN 837.1
NORMS.



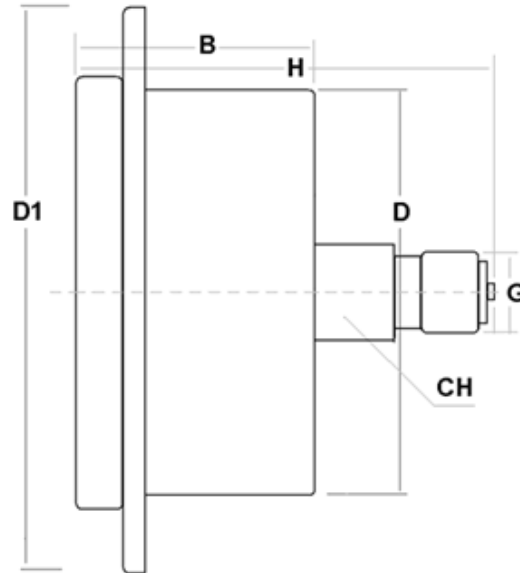
TECHNICAL DATA

DIAL	40 - 50 - 63 - 80 - 100 - 150 MM	
THREAD CONNECTION	DIAL 40 MM - 1/8" BSPT	
	DIAL 50, 63, 80 - 1/4" BSPP	
	DIAL 100, 150 - 1/2" BSPP	
ACCURACY	DIAL 40, 50 - 2,5%	
	DIAL 63 - 1,6%	
	DIAL 80, 100, 150 - 1%	
WORKING TEMPERATURE	-10 +60 °C (+14 +140 °F)	
WORKING PRESSURE	STEADY	75% OF THE SCALE
	VARIABLE	60% OF THE SCALE
OVERPRESSURE	25% < 60 BAR > 15% (ACCORDING EN873.1)	

MODELS

VACUUM	COMPOUND	MANOMETR
-1 - 0 BAR+CMHG		0,6
		1
		1,6
		2,5
		4
		6
		10
		16
		25
		40
		60
		100
		160
		250
	315	
	400	
	600	
	1000	
	BAR+Psi	

INSTALLATION DIMENSIONS



DIAL	B	D	D1	H	G	CH	WEIGHT (KG)
40	25	40,5	61	43	1/8" BSPT	11	0,11
50	28	51	72	50	1/4" BSPP	14	0,15
63	29	62	83	53	1/4" BSPP	14	0,19

- STAINLESS STEEL CASE;
- PROTECTION DEGREE - IP65;
- BRASS SPRING, MOVEMENT AND PIVOT;
- ALUMINIUM INDEX;
- ALUMINIUM DIAL;
- WHITE BACKGROUND;
- BLACK BAR SCALE AND RED PSI (EXCEPT COMPOUND GAUGE).

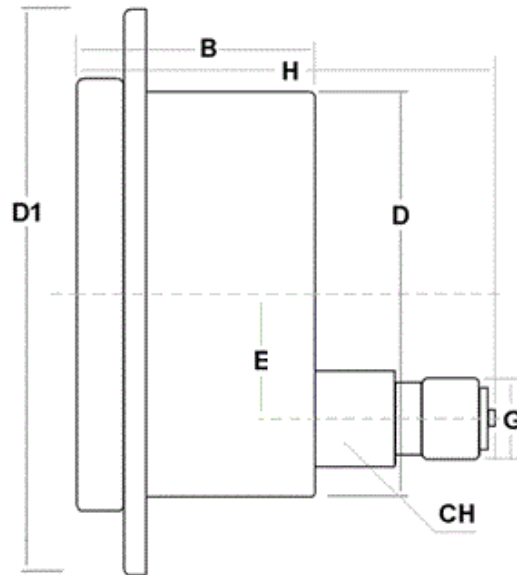


**INDICATORI
DI PRESSIONE**

MGE.F

PRESSURE GAUGES
STAINLESS STEEL CASE (GLYCERINE)
FLANGED

INSTALLATION DIMENSIONS



DIAL	B	D	D1	E	H	G	CH	WEIGHT (KG)
80	38	75	105	-	69	1/4" BSPP	14	0,45
100	39	98	128	18,3	82	1/2" BSPP	22	0,79
150	48	149	175	25,5	92	1/2" BSPP	22	0,88

- STAINLESS STEEL CASE;
- PROTECTION DEGREE - IP65;
- BRASS SPRING, MOVEMENT AND PIVOT;
- ALUMINIUM INDEX;
- ALUMINIUM DIAL;
- WHITE BACKGROUND;
- BLACK BAR SCALE AND RED PSI (EXCEPT COMPOUND GAUGE).

MGE.F

PRESSURE GAUGES
STAINLESS STEEL CASE (GLYCERINE)
FLANGED

INDICATORI
DI PRESSIONE



ORDER CODE

	F		MGE
--	---	--	-----

DIAL

40=40 MM

50=50 MM

63=63 MM

80=80 MM

100=100 MM

150=150 MM

F=FLANGED

PRESSURE RANGE

-1-0=-1-0 BAR+CMHG

-1+0,6=-1-+0,6 BAR

-1+1,5=-1-+1,5 BAR

-1+3=-1-+3 BAR

-1+5=-1-+5 BAR

-1+9=-1-+9 BAR

-1+15=-1-+15 BAR

0,6=0-0,6, BAR+PSI

1=0-1, BAR+PSI

1,6=0-1,6, BAR+PSI

2,5=0-2,5, BAR+PSI

4=0-4, BAR+PSI

6=0-6, BAR+PSI

10=0-10, BAR+PSI

16=0-16, BAR+PSI

25=0-25, BAR+PSI

40=0-40, BAR+PSI

60=0-60, BAR+PSI

100=0-100, BAR+PSI

160=0-160, BAR+PSI

250=0-250, BAR+PSI

315=0-315, BAR+PSI

400=0-400, BAR+PSI

600=0-600, BAR+PSI

1000=0-1000, BAR+PSI